

WORKING IN PARTNERSHIP



Read me, it's for your own safety. For all enquiries please call the South Gloucestershire helpdesk on 01454 868000 or visit www.southglos.gov.uk

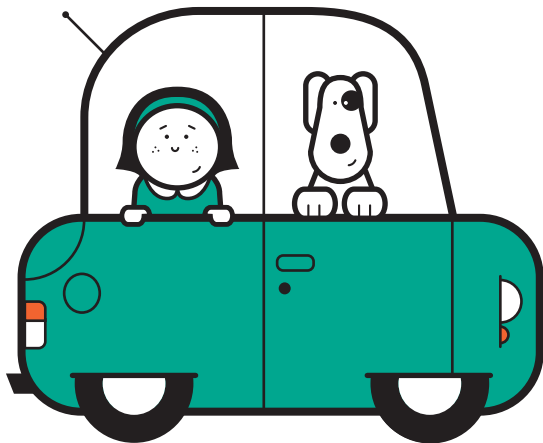
Printed on 100% recycled paper. Please recycle after use.

Don't be hasty,
please drive safely!



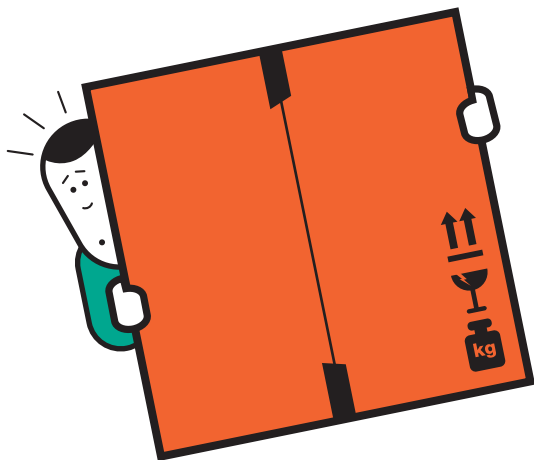
Keep your speed to a minimum when driving on site and be aware of other vehicle users and pedestrians. Drive with care!

When you arrive,
keep them inside!



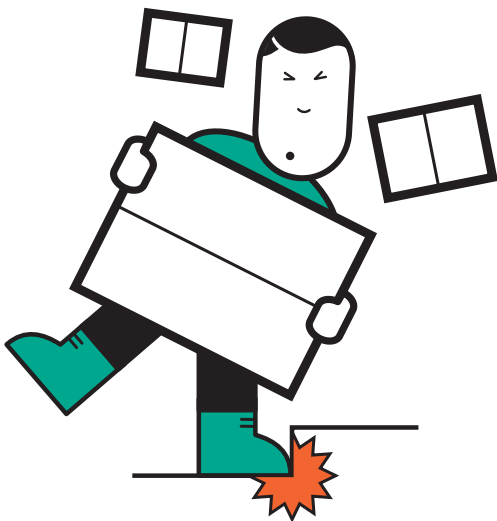
There are many hazards on site and children and pets are less visible to other site users. Keep them in your vehicle!

When you unpack, look after your back!



Please don't overfill containers that may need to be lifted. Remember to ask for assistance, we're here to help!

When loading a skip,
try not to trip!



Avoid short-cuts when disposing of
your waste. Be aware of steps and
other obstacles!

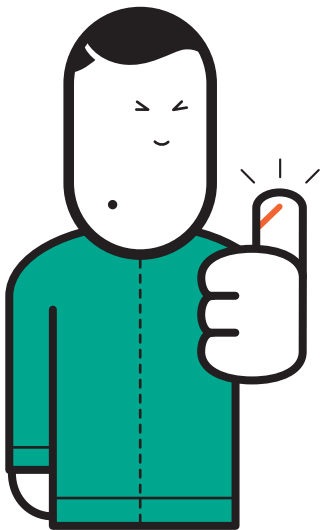
WORKING IN PARTNERSHIP



Read me, it's for your own safety. For all enquiries please call the South Gloucestershire helpdesk on 01454 868000 or visit www.southglos.gov.uk

Printed on 100% recycled paper. Please recycle after use.

Cuts hurt, make sure you're alert!



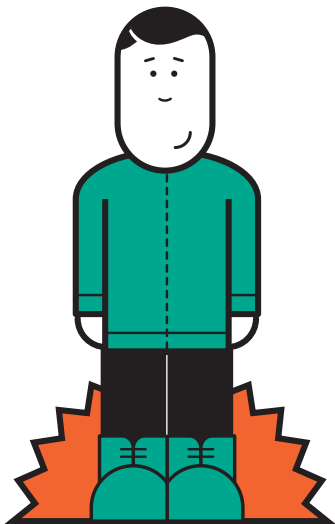
Check the load before lifting and be
aware of sharp edges. Wear gloves!

Don't climb and slip,
you'll end up in a skip!



You will put yourself at risk if you climb
on the barriers to access the containers.
Keep your feet firmly on the ground!

Prevent a bruise,
wear sensible shoes!



Protect your feet from bulky and
sharp objects. Put on sturdy footwear!

Hazards come and go, keep us in the know!



Report any potential hazards, near misses or accidents to site operatives. Make us aware!