



FMC Technologies – Team based Approach to Safety & Training

Thursday 18 August 2011

Jane Macdonald – HSE Advisor

**We put you first.
And keep you ahead.**

Introduction

- What FMC do
- FMC's Team Approach
- Hazard Awareness Training

Our Company

- Opened in Scotland in 1975
- leading design and manufacturer of wellheads and subsea XMAS trees
- in 1988-92, the facility expanded and shifted to subsea operations
- major investments completed through 2006-2011



Dunfermline HSE Charter

*“I will never knowingly walk past
an unsafe act or condition”*

Our Vision

FAISE

focus in all we do

HSE Forum



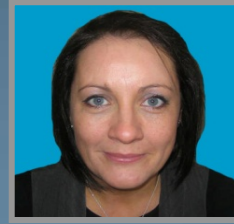
Iain Robertson
Chairman



Colin Sparling
*Business Risk Manager
– UK Operations*



John Johnston
*Health, Safety
and Radiation
Advisor*



Jane Macdonald
HSE Advisor



Sheena Johnston
*Environmental and
Sustainability
Advisor*



John Walker
*Business
Continuity and
Security Manager*

Transportation Glasgow Team Hands on for Safety

Risk Assessment COSHH Health Promotions

Manual Handling START First Aid Green Team

The Union HSE Awareness Pressure Testing

Radiation Management EVAC Marshals

Team of the Year - 2010

- The Health Promotions team has led at least 30 health related campaigns – some of which have changed people's lives forever. And the team has driven Dunfermline towards winning the won a gold award from Healthy Working Lives.
- The HSE Health Awareness team promotes the great work of the other teams. The way this team operates is methodical, controlled, and professional, and it is responsible for a range of popular events including the Blood Bus, winter safety campaigns and quizzes.

Cresent – Training Records Information Management System (TRIMS)

- The following bespoke interactive online training course has been developed and is mandatory for all FMC Dunfermline employees. The training has been trialled during 2010 and is currently being rolled out to all during 2011.



HAZARD IDENTIFICATION

FMC Technologies



Screen 22 of 30: Workshop Scenario



← BACK

TEXT

GLOSSARY

REPEAT

PAUSE

NEXT →



Screen 22 of 30: Workshop Scenario



← BACK

TEXT

GLOSSARY

REPEAT

PAUSE

NEXT →