

# em7

## asbestos essentials

### Non-licensed tasks

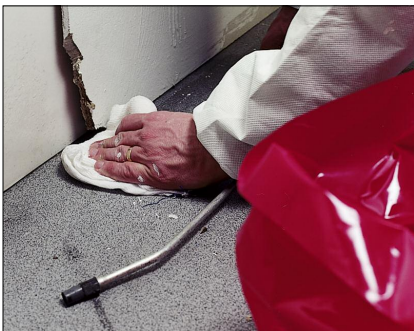
This information will help employers and the self-employed to comply with the Control of Asbestos Regulations 2006.

It is also useful for trade union and employee safety representatives.

Only carry out this work if you are properly trained and have the right equipment.

#### Remember:

- Asbestos fibres can cause lung cancer and lung diseases.
- You must be trained to work safely with asbestos materials.
- Use each damp rag surface only once.



Wiping up debris with a damp rag

# Using damp rags to clean surfaces of minor asbestos contamination

## Equipment and method sheet

### What this sheet covers

This sheet explains how to use rags to clean minor asbestos contamination from smooth, non-absorbent surfaces and equipment.

#### Equipment

- bucket of water;
- either cotton rags that do not shed fluff onto clean surfaces, or impregnated rags (eg 'Tak' rags);
- adhesive tape, to collect small dust deposits; and
- asbestos waste container, eg labelled polythene sack.

#### Procedures

- Pick up bigger pieces of debris and put them in a suitable waste container.

#### Rags

- Impregnated rags do not need soaking.
- Soak the rag in water. Fold in half or quarters. Wring it out.
- Wipe the contaminated surface.
- Re-fold the rag to give a clean surface.
- Repeat until you have used all the clean surfaces of the rag.
- Put the used rag in a bag. Get a clean rag, and repeat cleaning until all surfaces are clean.

**Caution: Never re-soak a contaminated rag. This contaminates the water.**

#### Tape

- Tape is useful only for removing small dust deposits. Surfaces may need repeated tape applications.
- Place a strip of tape over the contaminated surface. Peel it off slowly.
- Put the used tape in a bag. Repeat with a fresh piece.

#### Wastes

- Put bags of used rags and tape in a suitable asbestos waste container.
- Tape the container closed.
- If you avoid contaminating the bucket of water, no special precautions are need for water disposal.
- See sheet em9 for disposal.

#### MORE HELP

- **More asbestos pictures -**  
[www.hse.gov.uk/asbestos/gallery.htm](http://www.hse.gov.uk/asbestos/gallery.htm)
- **Help to decide if work is licensed -**  
[www.hse.gov.uk/asbestos/licensing/index.htm](http://www.hse.gov.uk/asbestos/licensing/index.htm)
- For information about health and safety, or to report inconsistencies or inaccuracies in this guidance, visit [www.hse.gov.uk/](http://www.hse.gov.uk/). You can view HSE guidance online or order priced publications from the website. HSE priced publications are also available from bookshops.
- These equipment and method (em) sheets and task (a) sheets can be downloaded free from [www.hse.gov.uk/asbestos/essentials/index.htm](http://www.hse.gov.uk/asbestos/essentials/index.htm)
- See sheet a0 for details of more guidance.

This guidance is issued by the Health and Safety Executive. Following the guidance is not compulsory and you are free to take other action. But if you do follow the guidance you will normally be doing enough to comply with the law. Health and safety inspectors seek to secure compliance with the law and may refer to this guidance as illustrating good practice.

This document is available at [www.hse.gov.uk/asbestos/essentials/index.htm](http://www.hse.gov.uk/asbestos/essentials/index.htm)

© *Crown copyright* If you wish to reuse this information visit [www.hse.gov.uk/copyright](http://www.hse.gov.uk/copyright) for details. First published as part of *Asbestos Essentials Task Manual 2001*.

Published by the Health and Safety Executive 03/11