

**OFFSHORE INJURY, ILL HEALTH AND INCIDENT
STATISTICS 2005/2006**

**HID STATISTICS REPORT
HSR 2006 - 1**

**Date of Issue: February 2007
Health and Safety Executive**

**OFFSHORE INJURY AND INCIDENT
STATISTICS 2005/2006**

**Health & Safety Executive
Hazardous Installations Directorate
Offshore Division**

Preface

This is the sixth report in a series of HID Statistics reports covering offshore injury and incident statistics, which continues from the previous OTO series. It is the tenth under the Reporting of Injuries, Diseases and Dangerous Occurrences Regulations 1995 (RIDDOR), and presents provisional data on injuries, diseases and incidents reported for the period 1 April 2005 to 31 March 2006.

Copies of this report can be obtained from:

Health and Safety Executive
Hazardous Installations Directorate
Operations Analysis Section
5N.2 Redgrave Court
Merton Road
Bootle
Merseyside L20 7HS

Tel: 0151 951 3767

Fax: 0151 951 4980

e-mail: operations.analysis.admin@hse.gsi.gov.uk

Copies of this report can also be downloaded from HSE's website at <http://www.hse.gov.uk/offshore>

CONTENTS

| | |
|--|-----|
| Preface | ii |
| CONTENTS | iii |
| SUMMARY | 3 |
| INTRODUCTION | 3 |
| COMMENTARY | 4 |
| Population | 4 |
| Fatal injuries..... | 4 |
| Major injuries..... | 4 |
| Over-3-day injuries..... | 4 |
| Ratio of major to over-3-day injuries | 4 |
| Three-year rolling averages | 4 |
| Details of injuries..... | 4 |
| Nature of injury | 4 |
| Part of body injured | 5 |
| Kind of accident..... | 5 |
| Age of injured person | 5 |
| Work Process Environment..... | 5 |
| Agent of Accident | 5 |
| Reportable Diseases | 6 |
| Dangerous Occurrences..... | 6 |
| FURTHER ANALYSIS OF MAJOR INJURIES | 6 |
| Major Injuries by Work Process Environment | 6 |
| Major Injuries in Offshore Maintenance & Construction..... | 6 |
| Major Injuries in Offshore Deck Operations (including Transport) | 7 |
| Major Injuries in Offshore Drilling/Workover..... | 7 |
| Number of major injuries | 8 |
| Age of injured person | 8 |
| Nature and Site of injury..... | 8 |
| Kind of Accident | 8 |
| Other trends | 9 |
| Annex 1..... | 10 |
| TABLE 1 -SUMMARY OF INJURIES AND DANGEROUS OCCURRENCES - APRIL 1995 – MARCH 2006 | 10 |
| TABLE 2 - INJURY RATES PER 100,000 WORKERS - APRIL 1995 – MARCH 2006..... | 10 |
| TABLE 3 - THREE-YEAR ROLLING AVERAGE OF NUMBER OF INJURIES - APRIL 1995 - MARCH 2006 | 11 |
| TABLE 3a THREE-YEAR ROLLING AVERAGE OF INJURY RATES PER 100,000 WORKERS - APRIL 1995 – MARCH 2006..... | 11 |
| TABLE 4 - RATIO OF OVER-3-DAY TO MAJOR INJURIES - 1995-2006 | 11 |
| TABLE 5 - SEVERITY OF INJURY AND NATURE OF INJURY - 2005/06 | 11 |
| TABLE 6 - SEVERITY OF INJURY AND PART OF BODY INJURED - 2005/06..... | 13 |
| TABLE 7 - SEVERITY OF INJURY AND KIND OF ACCIDENT - 2005/06 | 14 |
| TABLE 8 - SEVERITY OF INJURY AND AGE OF INJURED PERSON 2005/06..... | 14 |
| TABLE 9 - SEVERITY OF INJURY AND WORK PROCESS ENVIRONMENT 2005/06..... | 15 |
| TABLE 10 - SEVERITY OF INJURY AND AGENT OF ACCIDENT 2005/06 | 15 |
| TABLE 11 - ILL HEALTH - APRIL 1998 – MARCH 2006..... | 16 |
| TABLE 12 - DANGEROUS OCCURRENCES BY TYPE - 2005/06..... | 17 |
| Figure 1 - INJURIES BY SEVERITY - APRIL 1995 – MARCH 2006 | 18 |
| Figure 2 - COMBINED FATAL AND MAJOR INJURY RATE - APRIL 1995 – MARCH 2006..... | 19 |
| Figure 3 - OVER-3-DAY INJURY RATE - APRIL 1995 – MARCH 2006 | 20 |
| Figure 4 - 3-YEAR ROLLING AVERAGE OF NUMBER OF INJURIES - APRIL 1995 – MARCH 2006...21 | |
| Figure 4a - 3-YEAR ROLLING AVERAGE OF INJURY RATES - APRIL 1995 – MARCH 2006..... | 22 |

| | |
|--|----|
| Figure 5 - RATIO OF OVER-3-DAY TO MAJOR INJURIES - APRIL 1995 – MARCH 2006 | 23 |
| Figure 6 and 6a - SEVERITY OF INJURY AND NATURE OF INJURY - 2005/06..... | 24 |
| Figures 7 and 7a - SEVERITY OF INJURY AND PART OF BODY – 2005/06..... | 25 |
| Figures 8 and 8a - SEVERITY OF INJURY AND KIND OF ACCIDENT - 2005/06 | 26 |
| Figures 9 and 9a - SEVERITY OF INJURY AND AGE OF INJURED PERSON - 2005/06 | 27 |
| Figures 10 and 10a - SEVERITY OF INJURY AND WORK PROCESS ENVIRONMENT - 2005/06 | 29 |
| Figures 11 and 11a - SEVERITY OF INJURY AND AGENT OF ACCIDENT – 2005/06..... | 30 |
| Annex 2..... | 31 |
| Table 1 - INCIDENTS AND DANGEROUS OCCURRENCES - 2004 – 2005 | 31 |
| Table 2 - INJURY RATES (per 100,000 workers) - 2004 – 2005..... | 31 |
| Table 3 - ILL HEALTH - 2004 – 2005..... | 31 |

SUMMARY

This report contains provisional details of offshore accidents, dangerous occurrences and ill health reported to HSE from 1 April 2005 to 31 March 2006, with summarised data back to 1995/96 for comparison. Finalised summary figures for 2004/05 are also included.

The main points are:

- Two fatalities were reported in 2005/06, compared with none in 2004/05 and three in 2003/2004.
- 50 major injuries were reported, two more than in 2004/05 and eight more than ten years ago.
- The major injury rate per 100,000 workers decreased again, from 253.4 in 2004/05 to 216.7. This is 32% lower than the 10-year peak of 321.7 in 1997/98. The combined fatal and major injury rate also decreased, from 253.4 to 225.4.
- 125 'over-3-day' injuries were reported, an increase of 14 over the previous year. However the over-3-day injury rate decreased from 586 to 541.8 per 100,000 workers. This is 58% lower than the peak of 1293 in 1995/96.
- 491 dangerous occurrences were reported, compared with 558 in 2004/05, a decrease of 67. This is the lowest level in the last ten years, and 35% less than the peak of 764 in 2000/01.
- The estimated offshore workforce was 18,940 in 2004/05 and 23,072 in 2005/06, an increase of 21.8%.
- As last year, the 'maintenance/construction' work process environment produced the highest number of 'all injuries' this year, closely followed by 'offshore deck', which also had the highest number of major injuries. Both had a fatality this year.
- For the combined fatal and major injury category, the work process environment 'drilling' experienced a reduction of 36%, whereas 'offshore deck' and 'maintenance/construction' increased by 31% and 36% respectively.
- 'Struck by' was the most common kind of accident resulting in major injuries as it was in 2004/05. Two-thirds of major injuries were to limbs, split equally between upper and lower, with finger, hand and foot injuries the most common.
- The ratio of over-3-day to major injuries has fallen significantly over the last decade. However this year, as last year, it has increased, largely due to the reversal of the long-term downward trend of over-3-day injuries. This year the increased offshore activity may have had an effect. However, the three-year rolling average of injury rate still shows a decrease.

INTRODUCTION

1.1 This report covers the period from April 2005 to March 2006, with summary data from 1995/96 for comparison. It is based on incidents reported under the Reporting of Injuries, Diseases and Dangerous Occurrences Regulations 1995 (RIDDOR). **All 2005/06 data is provisional.**

1.2 Commentary is provided on the statistics as a whole, and more detailed analysis of major injuries. Annex 1 contains tables and graphs of the 2005/06 statistics, and Annex 2 finalised summary figures for 2004/05.

1.3 OSD commissioned a review of the pre-1996/97 data to reclassify injuries from that period in line with the RIDDOR requirements. All data in this report now conforms to the RIDDOR classification. Care should be taken in making comparisons, particularly where small numbers of incidents are involved, to avoid reading too much significance into variations.

COMMENTARY

Population

2.1 Injury rates are calculated using offshore population data from the industry's Vantage personnel tracking system. Up to and including 2003/04, data from the Inland Revenue was used. For 2005/06, the estimated offshore population was 23,072, which is 21% up on the previous year's figure of 18,940, reversing the downward trend of recent years – see Table 2. This reflects the recent increase in drilling and field development activity offshore.

Fatal injuries

2.2 There were two fatal injuries during 2005/06, but the number continues to fluctuate with no overall trend.

Major injuries

2.3 The number of major injuries (50) increased by two over the previous year.

The major injury rate per 100,000 workers decreased 14% to 216.7. The combined number of fatal and major injuries increased by 4 to 48, but the injury rate per 100,000 workers fell 11% to 225.4.

Over-3-day injuries

2.4 The number of over-3-day injuries increased 12.6% over 2004-05, to 125, going against the previous trend. However the over-3-day injury rate decreased by 7.5%, reflecting the increase in the offshore working population.

Ratio of major to over-3-day injuries

2.5 Table 4 and Figure 5 show the ratio of major to over-3-day injuries for the last eleven years. There is a slight increasing trend over the last three years.

Three-year rolling averages

2.6 Three-year rolling averages smooth out variations and give a clearer picture of overall trends - see Tables 3 and 3a and Figures 4 and 4a.

The three-year rolling average for the combined number of fatal and major injuries has virtually plateaued over the last five years. The average for the fatal and major injury rate, which takes account of the working population, has decreased 10% over the last 12 months. The average for over-3-day injuries has increased slightly, after a steady fall for several years. The over-3-day injury rate rolling average continues to decline.

Details of injuries

Nature of injury

2.7 Table 5 categorises injuries by severity and nature of injury, and Figures 6 and 6a illustrate their distribution. The most frequent natures of injury were fractures and strains and sprains, each with 50 accidents, or 28% of the total. Contusion injuries accounted for 16% of all injuries, with 29 incidents. For major injuries, fracture was the most common nature, with 29 incidents, 58% of the total. There were only two amputation injuries, compared with six last year. For over-3-day injuries, 'Sprains and strains' were the

most common nature of injury, with 49 incidents, or 39%. Contusions accounted for 18% of all over-3-day injuries (23 incidents), and fractures 16%, with 20 incidents.

Part of body injured

2.8 Table 6 and Figures 7 and 7a provide information on the site of injury. The upper limb¹ accounted for 71 incidents (43%) of all injuries for 2005/06. The lower limb accounted for 45 of all injuries (25%). The torso accounted for 38 of all injuries (21%), a considerable increase on 2004/05 (21 injuries and 14%). There were 13 head injuries, 7% of the total. Injuries to the limbs accounted for 33 (66%) of all major injuries, split almost equally between upper and lower limbs.

For over-3-day injuries, injuries to the limbs accounted for 83 of all injuries (66%). There were 54 (43%) incidents to the upper and 29 (23%) to the lower limbs. Of the upper limb injuries, 36 (29%) were attributed to injury to one or more fingers or thumbs. Injuries to the torso accounted for 25% of all over-3-day incidents, with 32 incidents reported.

Kind of accident

2.9 Table 7 and Figures 8 and 8a record the breakdown of the kind of accident against severity of injury. 46 (26%) of all injuries were from handling, lifting or carrying. Only five resulted in major injury. 28 incidents (16%) of all injuries were associated with slips, trips and falls on the same level, 13 incidents (7%) were falls from height. 63 (36%) of all injuries were from being struck by moving, flying or falling objects compared to 37 (24%) for 2004/05. Of these, 22 resulted in major injury, compared to 13 for 2004/05.

Age of injured person

2.10 Table 8 and Figures 9 and 9a give the age of the injured persons. The age band 45-49 recorded the highest number of injuries with 32 (18%) of incidents. The 30-34 age band recorded the highest number of major injuries (9 incidents, 18%) and one fatality. 25% of all injuries (44 incidents) were sustained by persons over 50.

Work Process Environment

2.11 Table 9 and Figures 10 and 10a describe the type of activity being carried out when the incident occurred. Work Process Environment categories were introduced for offshore incidents from April 2001. Prior to that, categories under 'operation' were used. Any direct comparisons of these categories should therefore be used with care. Most injuries occurred in the maintenance/ construction environment (52 incidents, or 29% of all injuries, including a fatality). The deck environment had the most major injuries (20 incidents, or 40%) and the other fatality.

Agent of Accident

2.12 Table 10 and Figures 11 & 11a give information on the agent of accident against severity of injury. 30% of all injuries (54 incidents) involved surfaces, structures and building access equipment, including one of the fatalities. 31 incidents (17% of the total) involved 'conveying, lifting storage systems and hand-held pushed/pulled transport equipment'. These two categories also had the majority of major injuries.

¹ Upper limb includes the fingers and the thumb, hand and wrist.

Reportable Diseases

2.13 Table 11 indicates there were eighteen cases of disease reported in 2005/06, compared with eleven in 2004/05. There were six cases each of chickenpox and mumps, three of food poisoning, two of decompression illness and one of measles.

Dangerous Occurrences

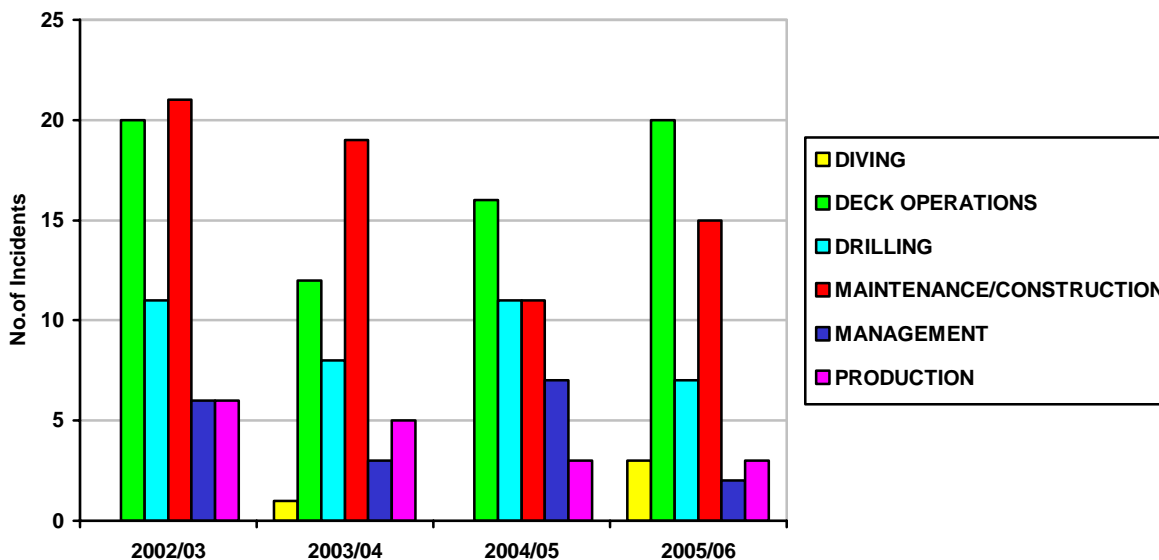
2.14 The total of 491 reported dangerous occurrences for 2005/06 represents an decrease of 67 over the figure for 2004/05 (558 incidents). Table 12 gives a summary of dangerous occurrences by type. DO type 77 (station-keeping, dropped objects and weather) accounted for 24% of all incidents in 2005/06 (117 incidents). The number of well incidents has decreased by 8% compared with 2004/05 (50 down to 42). Fire or explosion incidents decreased by 9 to 35, representing 7.1% of the total.

FURTHER ANALYSIS OF MAJOR INJURIES

3.1 This section compares the numbers of reported major injuries for the last four years and examines the links between the main data categories and other aspects. Fatal injuries are not included.

Major Injuries by Work Process Environment

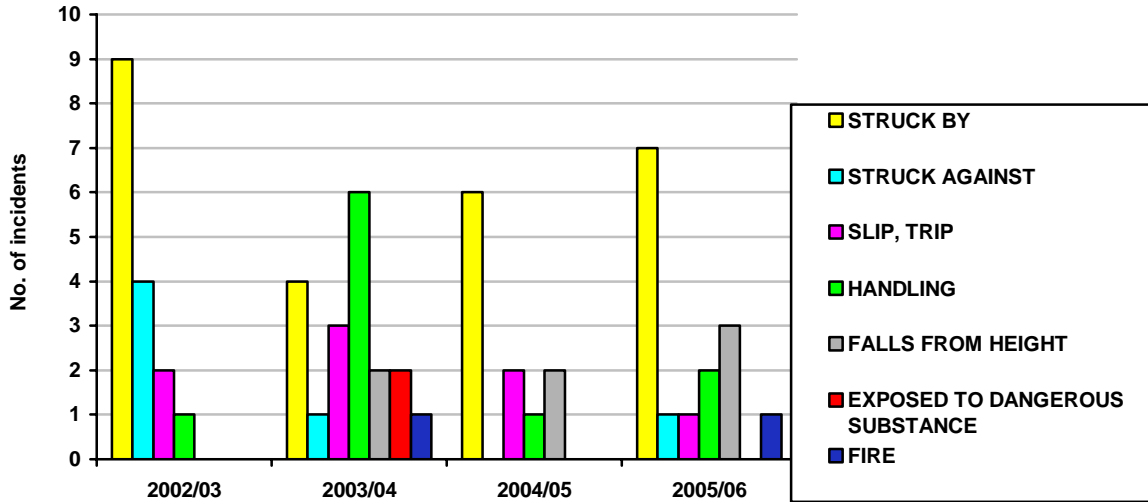
3.2 The chart below shows the numbers of reported major injuries over the last four years, sorted by the main work process environments. Maintenance/ construction, deck operations (including air and sea transport) and drilling continue to dominate as the work areas where injuries occur, accounting for around 80% of major injuries each year.



Major Injuries in Offshore Maintenance & Construction

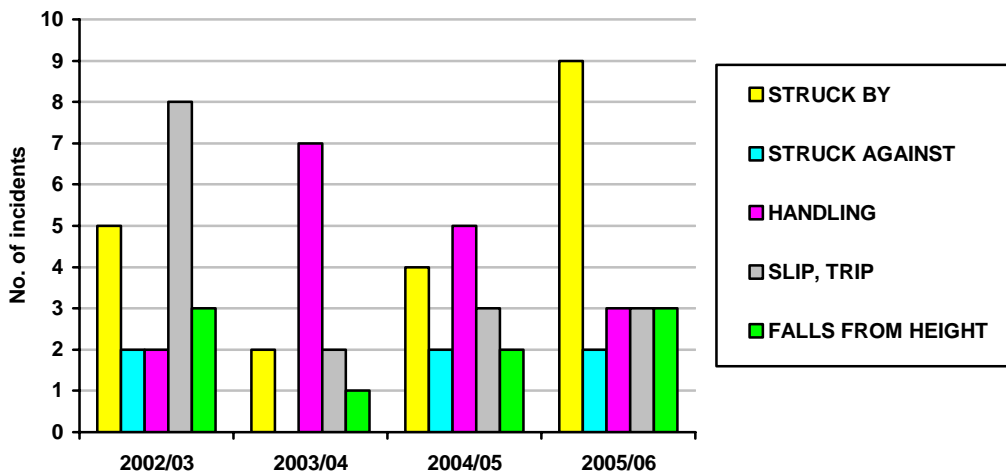
3.3 The chart below shows the relationship between 'offshore maintenance/ construction' and kind of accident.

After last year's decrease, the total number has increased from 11 to 15. The highest accident category for 2005/06 was again 'Struck by' with seven incidents. Fractures and contusions were each involved in three incidents. Five incidents involved head or neck injury. There were two amputations, a finger and an arm.



Major Injuries in Offshore Deck Operations (including Transport)

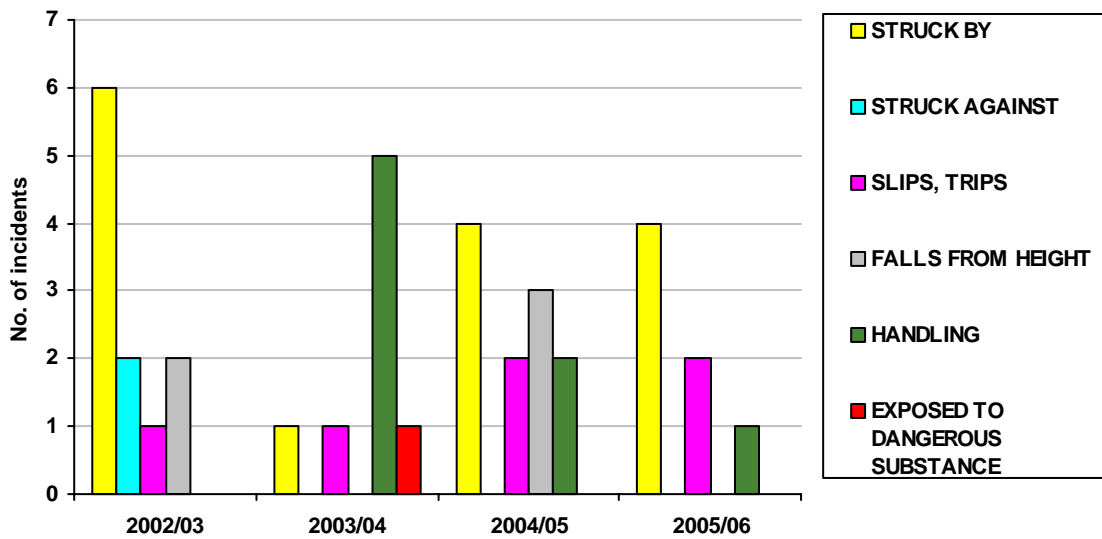
3.4 The chart below shows the links between offshore deck operations and kind of accident. Major injuries in this discipline are the highest of all disciplines, representing 40% of the total, compared with 33% last year and 25% for 2003/04.



The largest contributor this year was 'Struck by', with nine incidents. Nearly all of the incidents resulted in a fracture (18, or 90%). Eleven incidents involved the foot or leg, and six the hand or arm.

Major Injuries in Offshore Drilling/Workover

3. 5 The chart below shows the links between 'offshore drilling/workover' and kind of accident.



Major injuries in this discipline account for 14% of all reported major injuries. The total has decreased from eleven to seven, with 'struck by' again the largest category, with four instances. Three incidents involved fractures and four injuries to the finger or hand. There were no amputations this year. Five of those involved were under 40, and all under 50.

Number of major injuries

3.7 50 major injuries were recorded, two more than in 2004/05 and 2003/04. The injury rate however decreased, reflecting the 21% increase in the size of the workforce.

3.8 There has been a further increase in incidents in the 'offshore deck' discipline, rising from 25% of all major injuries in 2003/04 to 33% last year and 40% this year. The number of incidents in the 'maintenance/construction' discipline increased from 23% last year to 30% this year.

Age of injured person

3.9 The average age of injured person for all offshore major injuries continues to be around 41 years of age over the four-year period.

Nature and Site of injury

3.10 'Fracture' has been the most frequently recorded single kind of injury for the last four years, involving 58% of all major incidents for 2005/06. Fractures to the hand or foot are the most frequent. Amputations have fallen from 6 to 2 this year, one involving a finger and the other an arm.

Kind of Accident

3.11 Last year 'Struck by' was the main category for 'kind of major accident', as it was for two of the previous three years. 'Slips and trips', the second highest category, reduced by 25% compared to 2004/05.

Other trends

3.14 'Deck Operations' has again shown an increase of around 25% in the number of major injuries in 2005/06, as has 'Construction/Maintenance' . Drilling has shown a decrease of 36% from last year.

3.15 Last year's increase in the percentage of 'Struck by' incidents has been continued, with a 69% increase in major injuries. Last year's decrease in 'Handling' major injuries has also continued, with a 44% reduction in 2005/06.

3.16 Though the total of major injuries has remained fairly constant, the breakdown for 'site of body injured' reveals some changes. Head injuries have increased from 2 to 8, torso injuries from 4 to 6. Upper limb injuries however (the highest category for all injuries) decreased from 28 to 17.

Annex 1

TABLE 1 -SUMMARY OF INJURIES AND DANGEROUS OCCURRENCES - APRIL 1995 – MARCH 2006

| | 1995/96 | 1996/97 | 1997/98 | 1998/99 | 1999/00 | 2000/01 | 2001/02 | 2002/03 | 2003/04 | 2004/05 | 2005/06 |
|--|---------|---------|---------|---------|---------|---------|---------|---------|---------|---------|---------|
| Fatalities | 5 | 2 | 3 | 1 | 2 | 3 | 3 | 0 | 3 | 0 | 2 |
| Major injuries | 42 | 44 | 74 | 74 | 53 | 53 | 47 | 64 | 48 | 48 | 50 |
| Total fatalities & major injuries | 47 | 46 | 77 | 75 | 55 | 56 | 50 | 64 | 51 | 48 | 52 |
| Over-3-day injuries | 375 | 302 | 291 | 245 | 193 | 177 | 187 | 120 | 103 | 111 | 125 |
| Total injuries | 422 | 348 | 368 | 320 | 248 | 233 | 237 | 184 | 154 | 159 | 177 |
| Dangerous occurrences | 528 | 569 | 649 | 693 | 647 | 764 | 661 | 635 | 530 | 558 | 491 |

TABLE 2 - INJURY RATES PER 100,000 WORKERS - APRIL 1995 – MARCH 2006

| | 1995/96 | 1996/97 | 1997/98 | 1998/99 | 1999/00 | 2000/01 | 2001/02 | 2002/03 | 2003/04 | 2004/05 | 2005/06 |
|-------------------------------------|---------|---------|---------|---------|---------|---------|---------|---------|---------|---------|---------|
| Workforce | 29,003 | 26,853 | 23,000 | 25,500 | 19,000 | 23,330 | 23,206 | 20,619 | 18,793 | 18,940 | 23,072 |
| Fatal injury rate | 17.2 | 7.4 | 13.0 | 3.9 | 10.5 | 12.9 | 12.9 | 0 | 16.0 | 0 | 8.7 |
| Major injury rate | 144.8 | 163.9 | 321.7 | 290.2 | 278.9 | 227.2 | 202.5 | 310.4 | 255.4 | 253.4 | 216.7 |
| Fatal plus major injury rate | 162.1 | 171.3 | 334.8 | 294.1 | 289.5 | 240.0 | 215.5 | 310.4 | 271.4 | 253.4 | 225.4 |
| Over-3-day injury rate | 1293 | 1124.6 | 1265.2 | 960.8 | 1015.8 | 758.7 | 805.8 | 582.0 | 548.1 | 586 | 541.8 |

TABLE 3 - THREE-YEAR ROLLING AVERAGE OF NUMBER OF INJURIES - APRIL 1995 - MARCH 2006

| | 1995/96 1997/98 | 1996/97 1998/99 | 1997/98 1999/00 | 1998/99 2000/01 | 1999/2000 2001/02 | 2000/01 2002/03 | 2001/02 2003/04 | 2002/03 2004/05 | 2003/04 2005/06 |
|--|--------------------|--------------------|--------------------|--------------------|----------------------|--------------------|--------------------|--------------------|--------------------|
| Total fatalities and major injuries | 56.7 | 66 | 69 | 62 | 53.4 | 56.7 | 55 | 54.3 | 50.3 |
| Over-3-day injuries | 323 | 279 | 243 | 205 | 185.7 | 161.3 | 136.7 | 111.3 | 113 |

TABLE 3a THREE-YEAR ROLLING AVERAGE OF INJURY RATES PER 100,000 WORKERS - APRIL 1995 – MARCH 2006

| | 1995/96 1997/98 | 1996/97 1998/99 | 1997/98 1999/00 | 1998/99 2000/01 | 1999/2000 2001/02 | 2000/01 2002/03 | 2001/02 2003/04 | 2002/03 2004/05 | 2003/04 2005/06 |
|-------------------------------------|--------------------|--------------------|--------------------|--------------------|----------------------|--------------------|--------------------|--------------------|--------------------|
| Average workforce | 26,285 | 25,118 | 22,500 | 22,610 | 21,845 | 22,385 | 20,873 | 19,451 | 20,268 |
| Fatal plus major injury rate | 216.9 | 262.8 | 306.7 | 274.2 | 247.2 | 254.6 | 263.5 | 277.6 | 248.3 |
| Over-3-day injury rate | 1228.8 | 1110.8 | 1080.0 | 906.7 | 851.5 | 719.2 | 656.4 | 572.4 | 557.5 |

TABLE 4 - RATIO OF OVER-3-DAY TO MAJOR INJURIES - 1995-2006

| | 1995/96 | 1996/97 | 1997/98 | 1998/99 | 1999/00 | 2000/01 | 2001/02 | 2002/03 | 2003/04 | 2004/05 | 2005/06 |
|-------------------|---------|---------|---------|---------|---------|---------|---------|---------|---------|---------|---------|
| MAJOR | 42 | 44 | 74 | 74 | 53 | 53 | 47 | 64 | 48 | 48 | 50 |
| OVER-3-DAY | 375 | 302 | 291 | 245 | 193 | 177 | 187 | 120 | 103 | 111 | 125 |
| Ratio | 8.9 | 6.9 | 3.9 | 3.3 | 3.6 | 3.3 | 4 | 1.9 | 2.14 | 2.31 | 2.5 |

TABLE 5 - SEVERITY OF INJURY AND NATURE OF INJURY - 2005/06

| NATURE OF INJURY | SEVERITY OF INJURY | | | ALL INJURIES |
|--------------------|--------------------|-------|------------|--------------|
| | FATAL | MAJOR | OVER-3-DAY | |
| Amputation | | 2 | | 2 |
| Contusions | | 6 | 23 | 29 |
| Dislocation | | 1 | 3 | 4 |

| | | | | |
|---|---|----|-----|-----|
| Fractures | 1 | 29 | 20 | 50 |
| Laceration & open wounds | 1 | 4 | 18 | 23 |
| Injuries of more than one of the other natures | | 4 | 5 | 9 |
| Injuries not classified elsewhere | | 1 | 4 | 5 |
| Sprains & strains | | 1 | 49 | 50 |
| Superficial injuries | | 2 | 1 | 3 |
| Burns | | | 2 | 3 |
| Total | 2 | 50 | 125 | 177 |

TABLE 6 - SEVERITY OF INJURY AND PART OF BODY INJURED - 2005/06

| SITE OF INJURY | SEVERITY OF INJURY | | | ALL INJURIES |
|---------------------------------|--------------------|-----------|------------|--------------|
| | FATAL | MAJOR | OVER-3-DAY | |
| Eye | | 1 | 1 | 2 |
| Other parts of face | | 2 | 2 | 4 |
| Head excluding face | 1 | 5 | 1 | 7 |
| Several locations of head | | | | |
| TOTAL: HEAD | 1 | 8 | 4 | 13 |
| Neck | | 2 | 2 | 4 |
| Back | | 1 | 23 | 24 |
| Trunk | | 3 | 6 | 9 |
| Several locations of torso | | | 1 | 1 |
| TOTAL: TORSO | | 6 | 32 | 38 |
| One or more finger/thumb(s) | | 4 | 36 | 40 |
| Hand | | 4 | 3 | 7 |
| Wrist | | 4 | 4 | 8 |
| Rest of upper limb | | 4 | 8 | 12 |
| Several locations of upper limb | | 1 | 3 | 4 |
| TOTAL: UPPER LIMB | | 17 | 54 | 71 |
| One or more toes | | | 2 | 2 |
| Foot | | 8 | 5 | 13 |
| Ankle | | 2 | 9 | 11 |
| Rest of lower limb | | 5 | 13 | 18 |
| Several locations of lower limb | | 1 | | 1 |
| TOTAL: LOWER LIMB | | 16 | 29 | 45 |
| Several locations | 1 | 2 | 6 | 9 |
| General locations | | 1 | | 1 |
| Unspecified locations | | | | |
| GRAND TOTAL | 2 | 50 | 125 | 177 |

TABLE 7 - SEVERITY OF INJURY AND KIND OF ACCIDENT - 2005/06

| KIND OF ACCIDENT | SEVERITY OF INJURY | | | ALL INJURIES |
|--|--------------------|-----------|------------|--------------|
| | FATAL | MAJOR | OVER-3-DAY | |
| Contact with moving machinery or material being machined | | | 3 | 3 |
| Struck by moving, including flying or falling object | 1 | 22 | 40 | 63 |
| Struck against something fixed or stationary | | 4 | 10 | 14 |
| Injured whilst handling, lifting or carrying | | 5 | 41 | 46 |
| Slip, trip or fall on same level | | 9 | 19 | 28 |
| Fall from height (number over 2m in brackets) | 1(1) | 5(2) | 7(1) | 13(4) |
| Exposed to, or in contact with, a harmful substance | | 1 | 4 | 5 |
| Exposed to fire | | 1 | | 1 |
| Contact with electricity | | | 1 | 1 |
| Other/not recorded | | 3 | | 3 |
| TOTAL | 2 | 50 | 125 | 177 |

TABLE 8 - SEVERITY OF INJURY AND AGE OF INJURED PERSON 2005/06

| AGE OF INJURED PERSON | SEVERITY OF INJURY | | | ALL INJURIES |
|-----------------------|--------------------|-----------|------------|--------------|
| | FATAL | MAJOR | OVER-3-DAY | |
| 20 – 24 | | 4 | 9 | 13 |
| 25 – 29 | | 4 | 10 | 14 |
| 30 – 34 | 1 | 9 | 18 | 28 |
| 35 – 39 | | 6 | 21 | 27 |
| 40 – 44 | | 3 | 13 | 16 |
| 45 – 49 | | 8 | 24 | 32 |
| 50 – 54 | | 7 | 10 | 17 |
| 55 – 59 | 1 | 7 | 12 | 20 |
| 60 – 64 | | 1 | 5 | 6 |
| 65 - 69 | | | 1 | 1 |
| Not recorded | | 1 | 2 | 3 |
| TOTAL | 2 | 50 | 125 | 177 |

TABLE 9 - SEVERITY OF INJURY AND WORK PROCESS ENVIRONMENT 2005/06

| WORK PROCESS ENVIRONMENT | SEVERITY OF INJURY | | | ALL INJURIES |
|--------------------------|--------------------|-------|------------|--------------|
| | FATAL | MAJOR | OVER-3-DAY | |
| DECK OPERATIONS | 1 | 20 | 26 | 47 |
| DRILLING | | 7 | 30 | 37 |
| MANAGEMENT | | 2 | 20 | 22 |
| PRODUCTION | | 3 | 13 | 16 |
| MAINTENANCE/CONSTRUCTION | 1 | 15 | 36 | 52 |
| OFFSHORE DIVING | | 3 | | 3 |
| TOTAL | 2 | 50 | 125 | 177 |

TABLE 10 - SEVERITY OF INJURY AND AGENT OF ACCIDENT 2005/06

| AGENT OF ACCIDENT | SEVERITY OF INJURY | | | ALL INJURIES |
|--|--------------------|-------|------------|--------------|
| | FATAL | MAJOR | OVER-3-DAY | |
| Surfaces, structures and building access equipment | 1 | 14 | 39 | 54 |
| Systems for the distribution of materials or substances | | 7 | 9 | 16 |
| Hand held tools and equipment | | 1 | 16 | 17 |
| Systems for energy and storage, motors | | 1 | 3 | 4 |
| Conveying, lifting storage systems and hand-held pushed/pulled transport equipment | | 13 | 18 | 31 |
| Machines and equipment- not hand tools | | 2 | 9 | 11 |
| Materials, objects, products, machine components | 1 | 10 | 15 | 26 |
| Substances and radiation | | | 4 | 4 |
| Safety devices and equipment | | 2 | | 2 |
| Furniture, washing and bathing facilities, office and personal equipment | | | 3 | 3 |
| Leisure equipment | | | 2 | 2 |
| People | | | 7 | 7 |
| TOTAL | 2 | 50 | 125 | 177 |

TABLE 11 - ILL HEALTH - APRIL 1998 – MARCH 2006

| DESCRIPTION | 1998/99 | 1999/00 | 2000/01 | 2001/02 | 2002/03 | 2003/04 | 2004/05 | 2005/06 | TOTAL |
|-------------------------|----------------|----------------|----------------|----------------|----------------|----------------|----------------|----------------|--------------|
| Decompression illness | 3 | 2 | 1 | 5 | 4 | 1 | | 2 | 18 |
| Barotrauma | | | 1 | | | 1 | | | 2 |
| Cramp repetitive | | | | | | 1 | | | 1 |
| Beat knee | | 1 | | | | 1 | | | 2 |
| Inflammation of tendons | 1 | 1 | 1 | 2 | 1 | | | | 6 |
| Hand arm vibration | | | 1 | | | | | | 1 |
| Occupational Dermatitis | 4 | 2 | 5 | | | 2 | 1 | | 14 |
| Chickenpox | 6 | 7 | 10 | 6 | 13 | 6 | 8 | 6 | 62 |
| Food poisoning | 1* | 1 | | | | | | 3 | 5 |
| Malaria | | | | | | 1 | | | 1 |
| Meningitis | 1 | | 1 | | | | | | 2 |
| Rubella | | 1 | | | | | | | 1 |
| Mumps | | | | | 1 | | 1 | 6 | 8 |
| Scarlet Fever | | | | | | | 1 | | 1 |
| Measles | | | | | | | | 1 | 1 |
| TOTAL | 16 | 15 | 20 | 13 | 19 | 13 | 11 | 18 | 125 |

* This incident resulted in twelve people being affected.

TABLE 12 - DANGEROUS OCCURRENCES BY TYPE - 2005/06

| TYPE | DESCRIPTION | NUMBER |
|------|---|--------|
| 01 | Failure of lifting machinery etc. | 41 |
| 02 | Failure of pressure systems | 5 |
| 05 | Electrical short circuit or overload | 7 |
| 09 | Malfunction of breathing apparatus | 6 |
| 10 | Diving operations | 13 |
| 13 | Scaffold collapse | 1 |
| 14 | Well operations | 42 |
| 18 | Pipelines and pipeline works | 6 |
| 73 | Release of hydrocarbon | 195 |
| 74 | Fire or explosion other than hydrocarbon | 35 |
| 75 | Release or escape of a dangerous substance other than hydrocarbon | 12 |
| 76 | Failure of equipment required to maintain a floating installation on station; objects dropped on an installation, attendant vessel or into water; or weather damage | 117 |
| 77 | Collision between a vessel or aircraft and an installation | 7 |
| 78 | Possible collision offshore | 3 |
| 79 | Evacuation of an installation | 1 |
| | TOTAL | 491 |

Figure 1 - INJURIES BY SEVERITY - APRIL 1995 – MARCH 2006

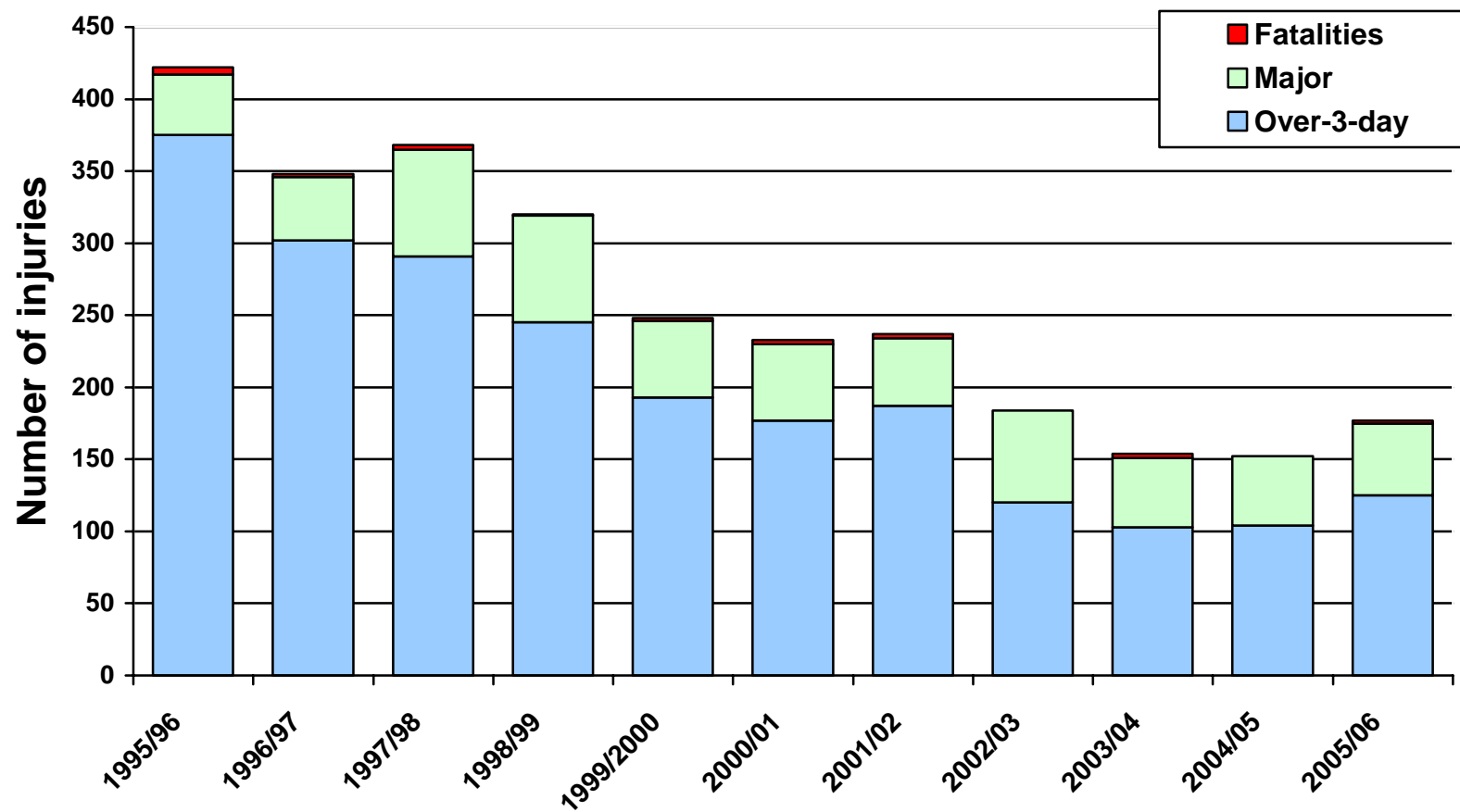


Figure 2 - COMBINED FATAL AND MAJOR INJURY RATE - APRIL 1995 – MARCH 2006

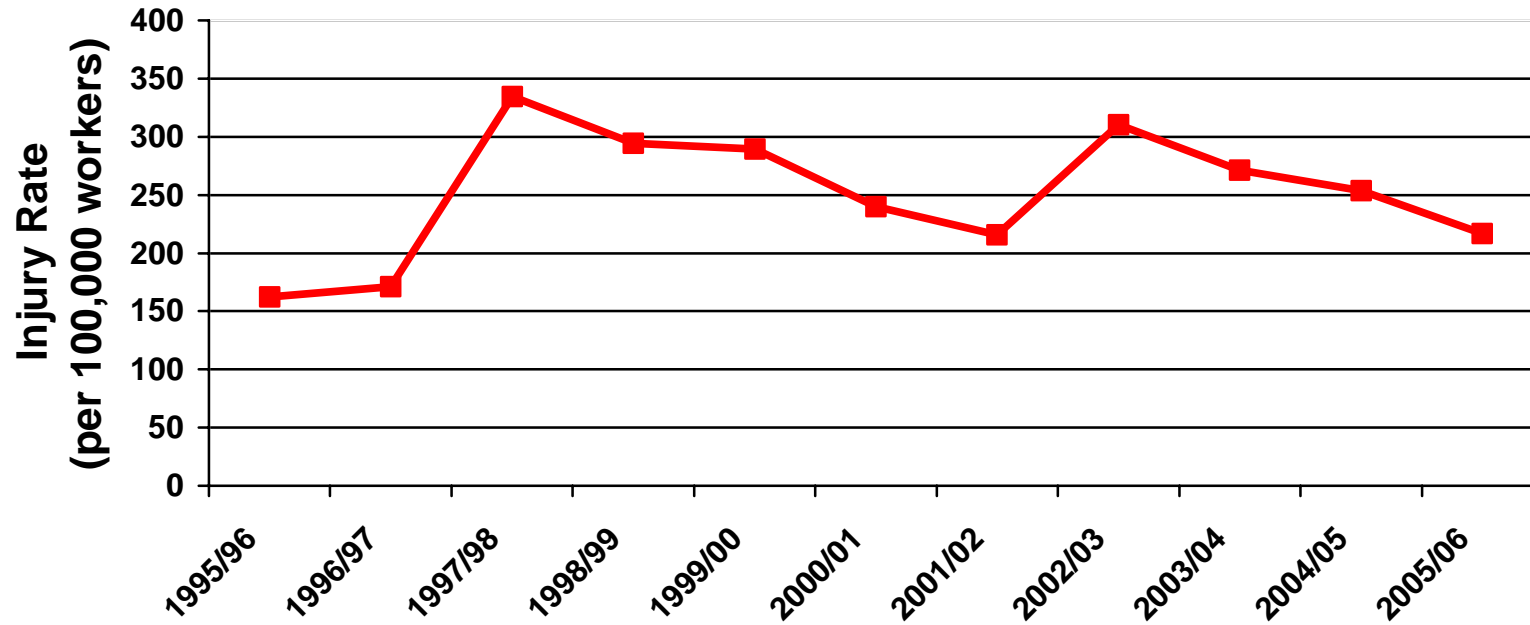


Figure 3 - OVER-3-DAY INJURY RATE - APRIL 1995 – MARCH 2006

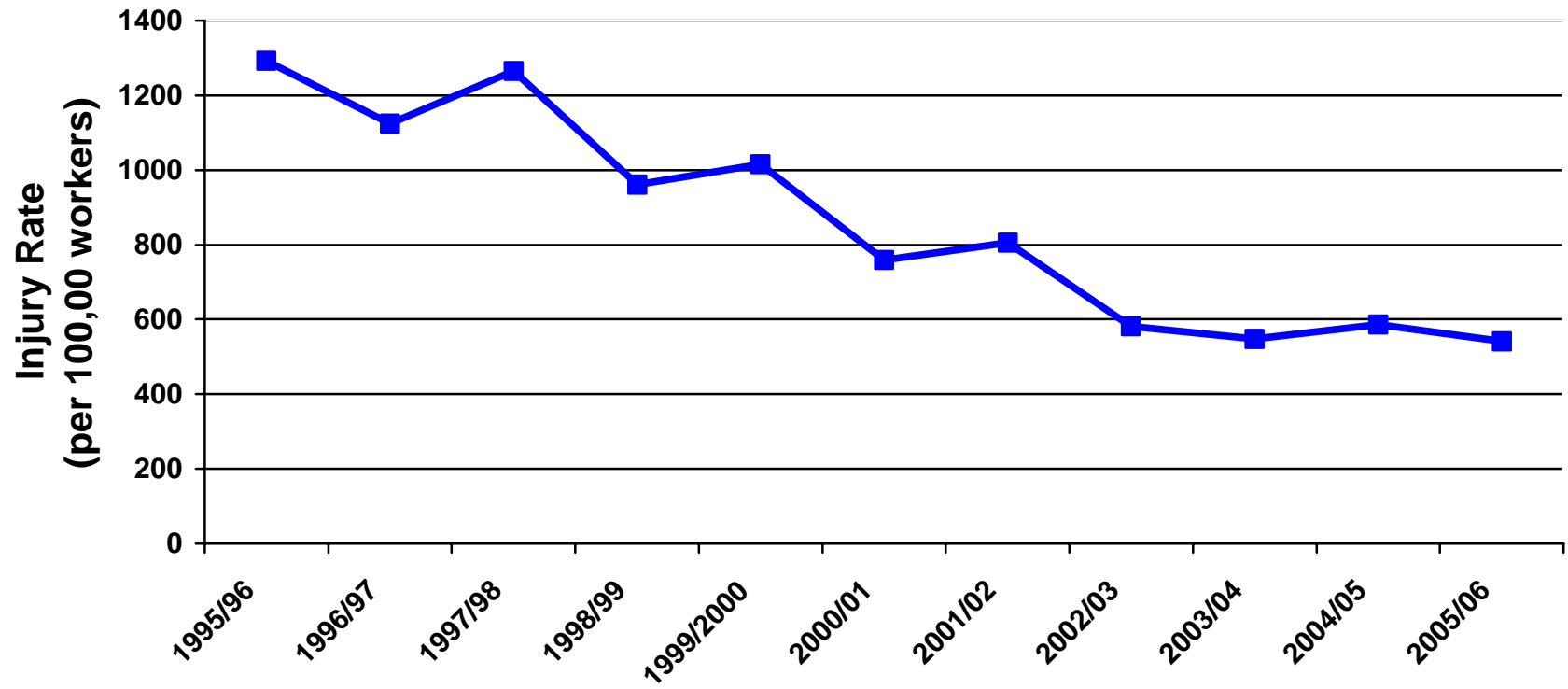


Figure 4 - 3-YEAR ROLLING AVERAGE OF NUMBER OF INJURIES - APRIL 1995 – MARCH 2006

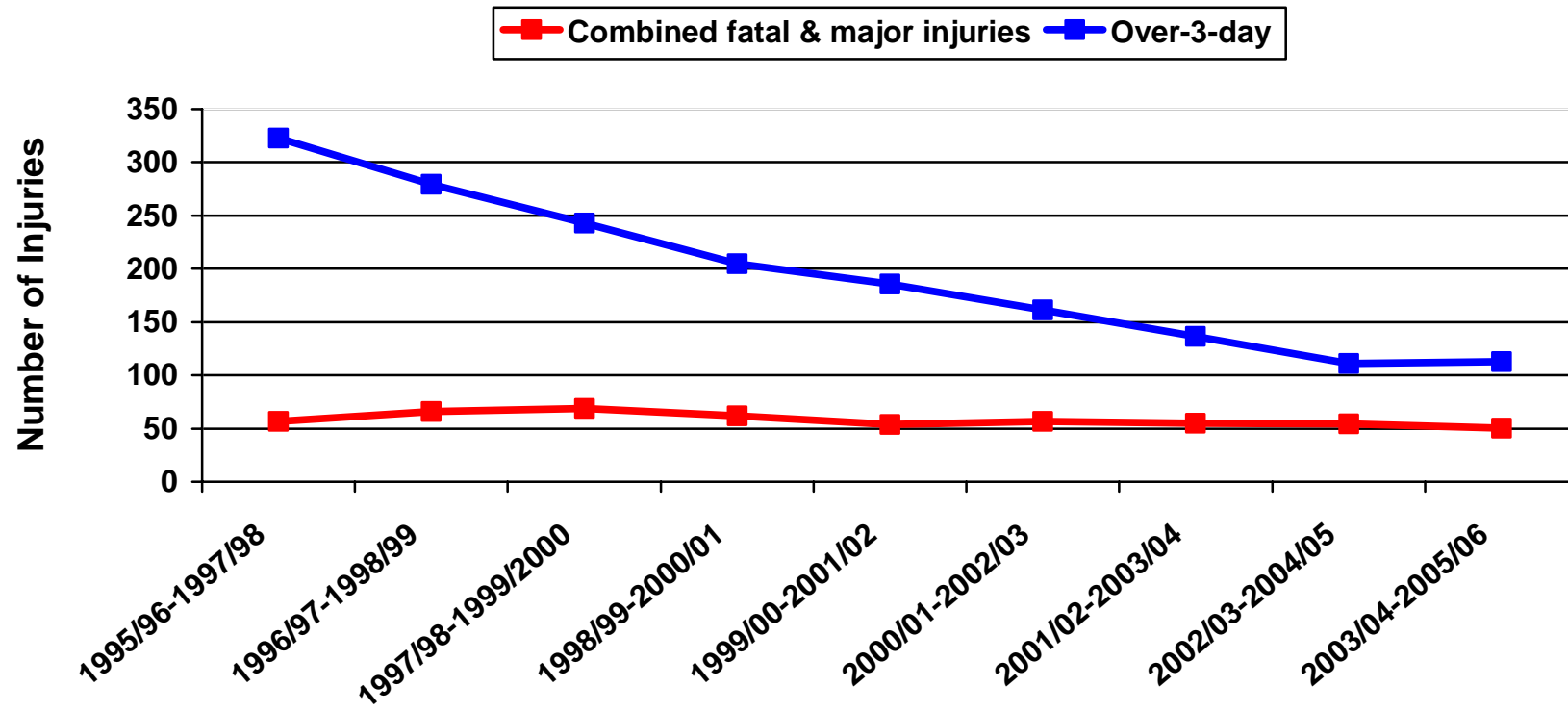


Figure 4a - 3-YEAR ROLLING AVERAGE OF INJURY RATES - APRIL 1995 – MARCH 2006

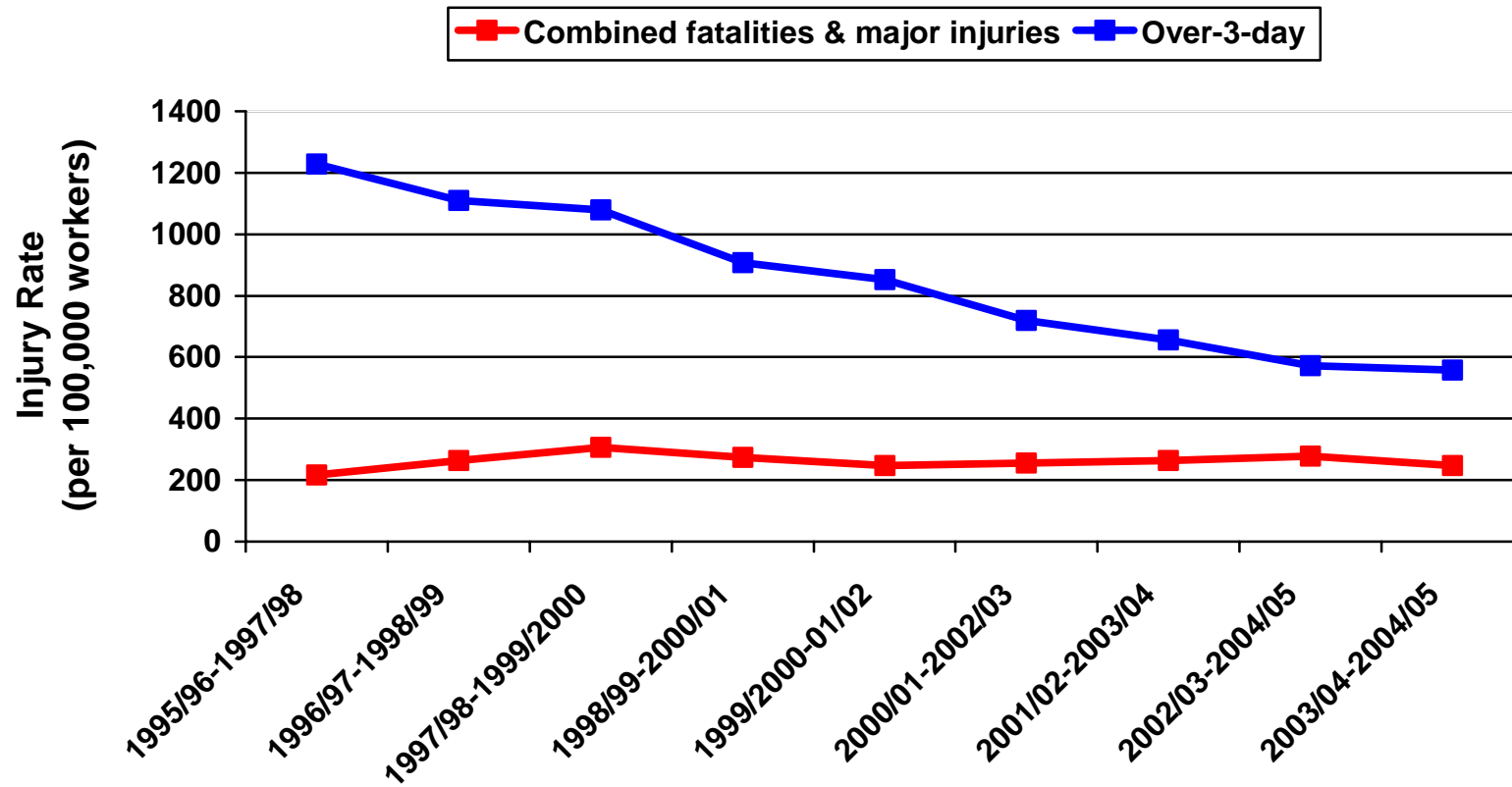


Figure 5 - RATIO OF OVER-3-DAY TO MAJOR INJURIES - APRIL 1995 – MARCH 2006

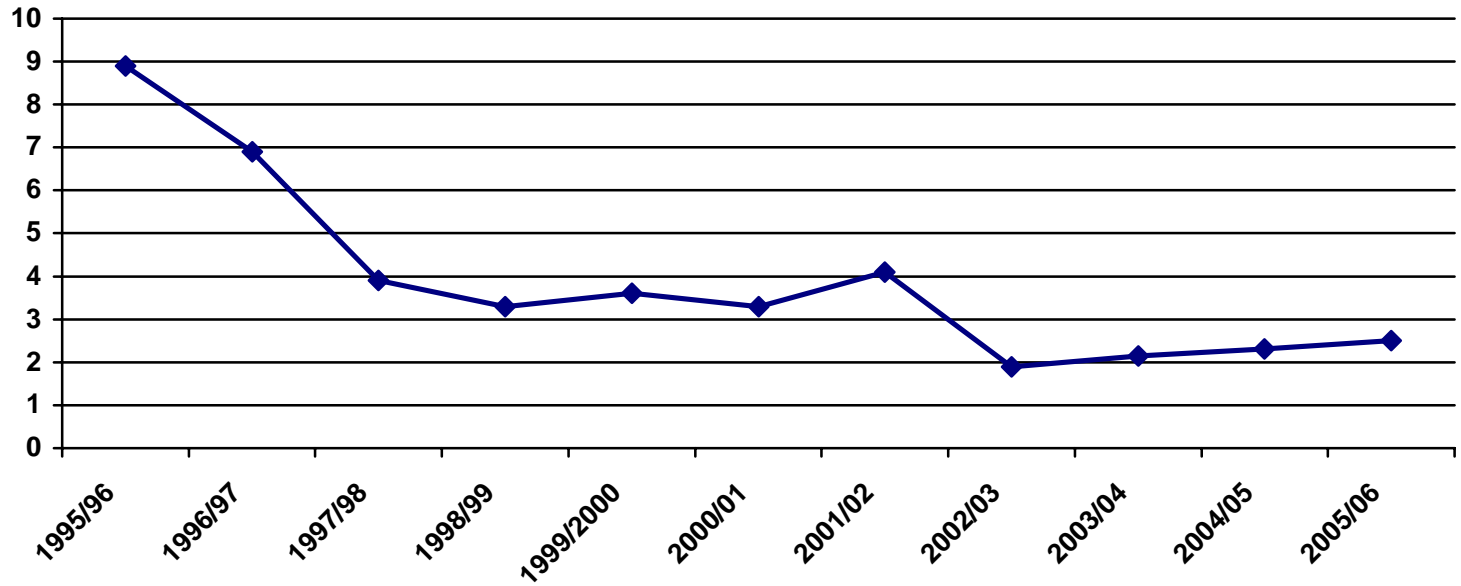
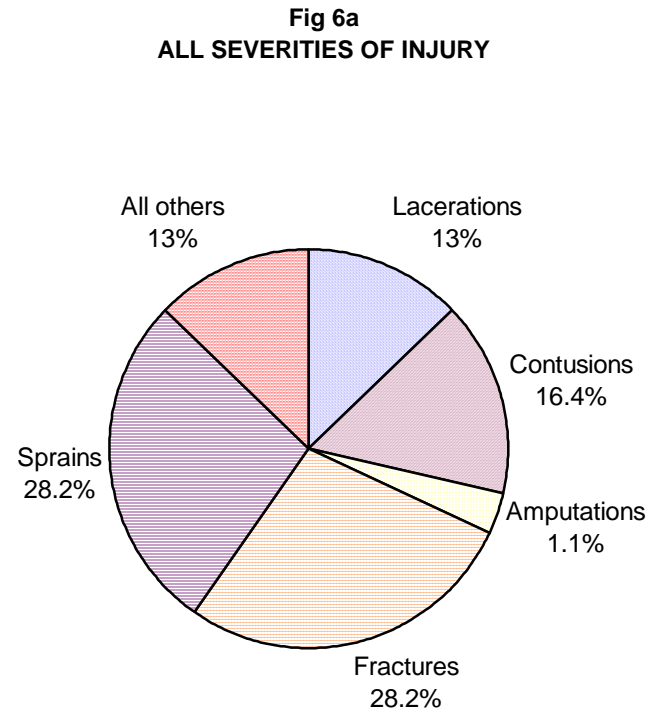
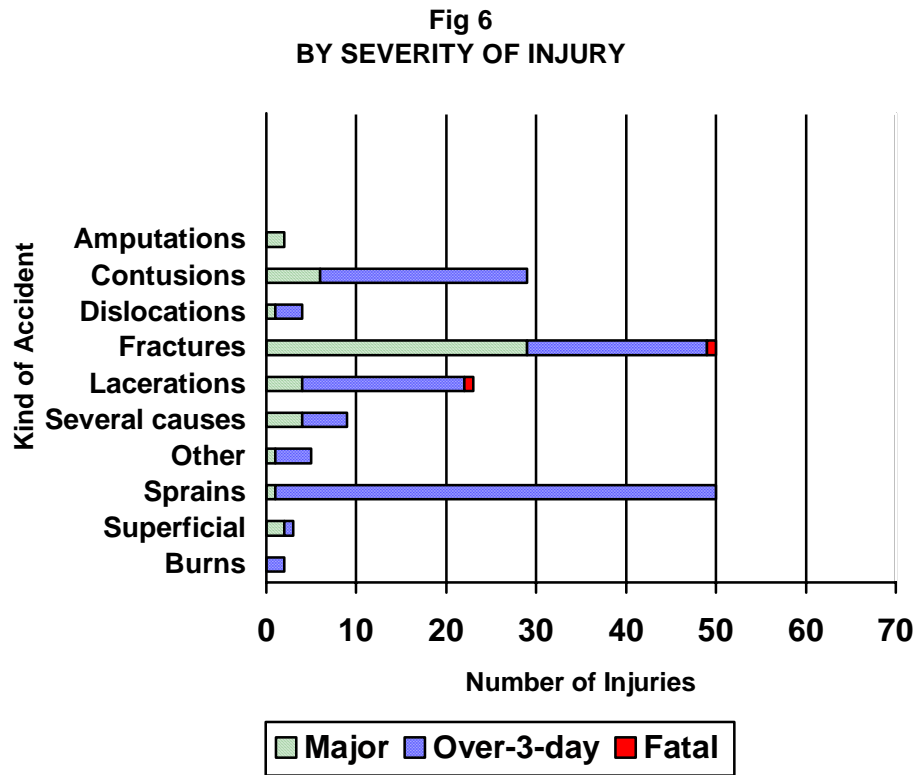


Figure 6 and 6a - SEVERITY OF INJURY AND NATURE OF INJURY - 2005/06



Figures 7 and 7a - SEVERITY OF INJURY AND PART OF BODY – 2005/06

Fig 7 BY SEVERITY OF INJURY

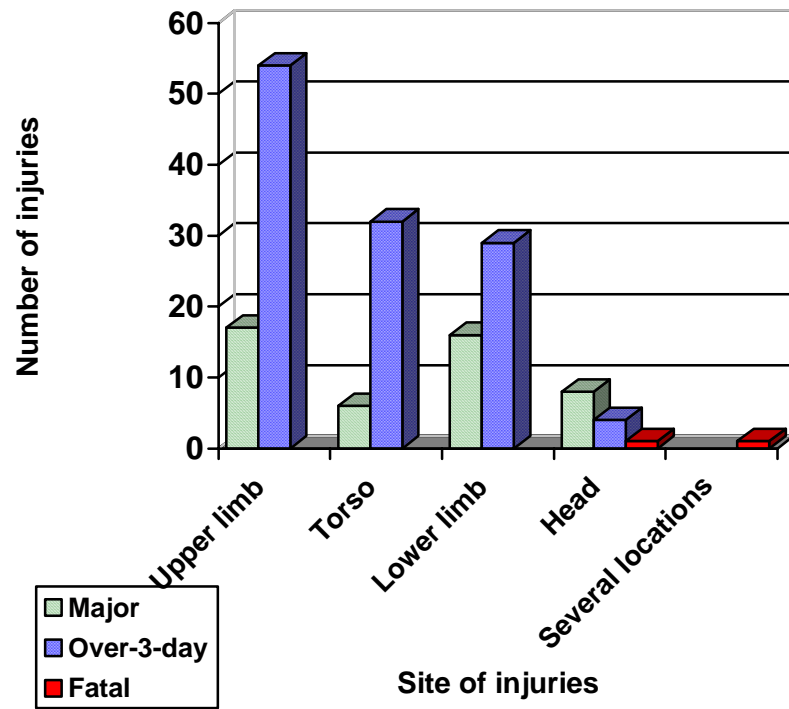
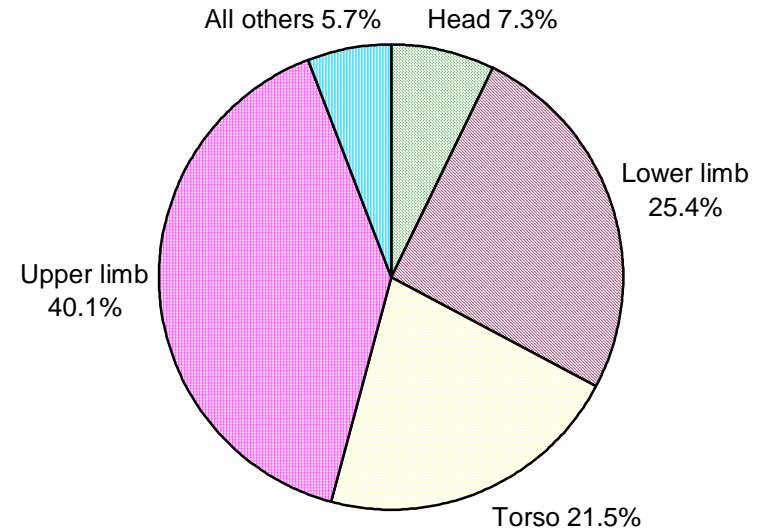


Fig 7a ALL SEVERITIES OF INJURY



Figures 8 and 8a - SEVERITY OF INJURY AND KIND OF ACCIDENT - 2005/06

Fig 8
BY SEVERITY OF INJURY

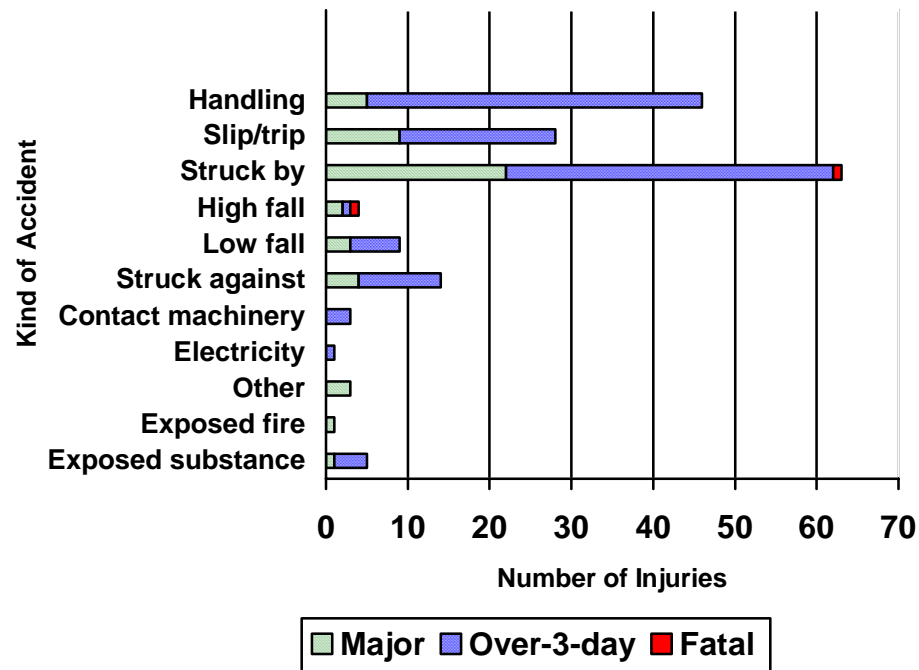
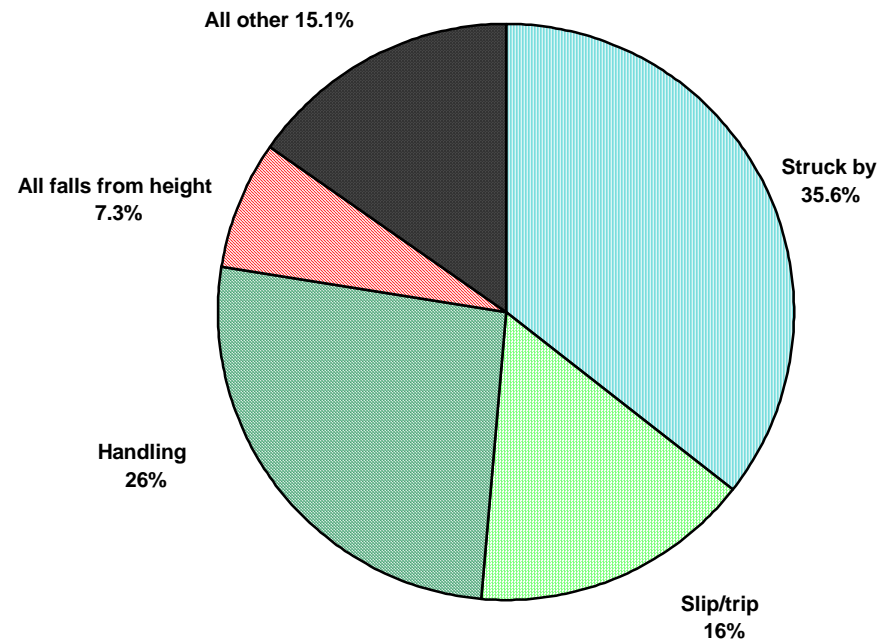


Fig 8a ALL SEVERITIES OF INJURY



(p) = provisional

Figures 9 and 9a - SEVERITY OF INJURY AND AGE OF INJURED PERSON - 2005/06

Fig 9 BY SEVERITY OF INJURY

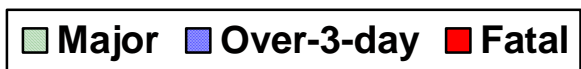
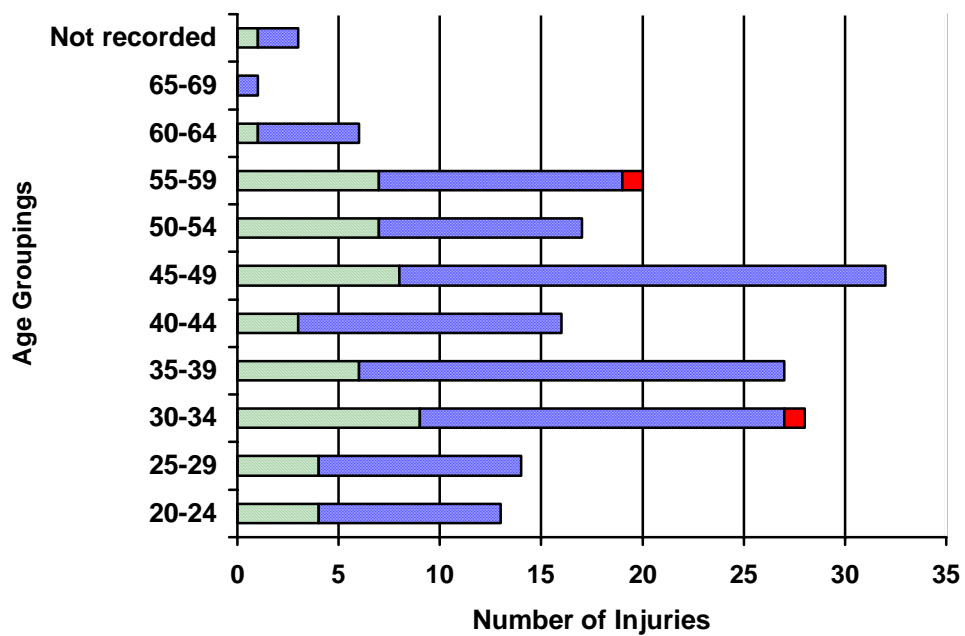
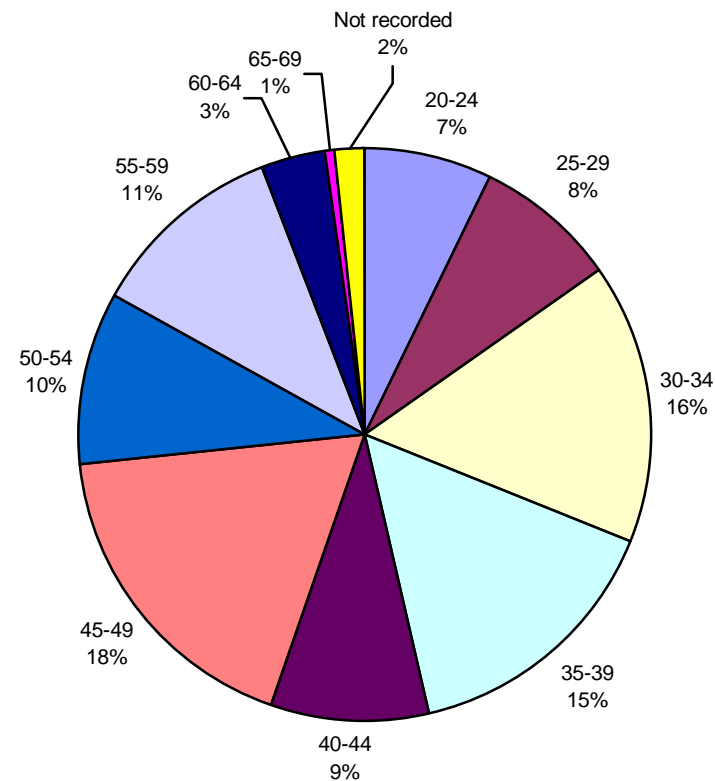


Fig 9A - ALL SEVERITIES



Figures 10 and 10a - SEVERITY OF INJURY AND WORK PROCESS ENVIRONMENT - 2005/06

Fig 10 SEVERITY OF INJURY

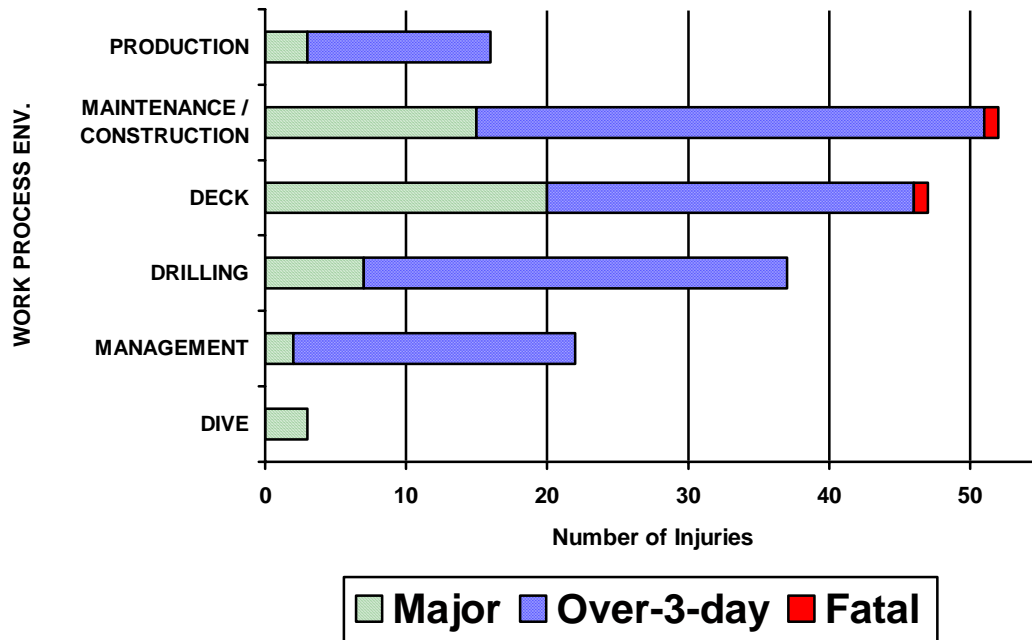
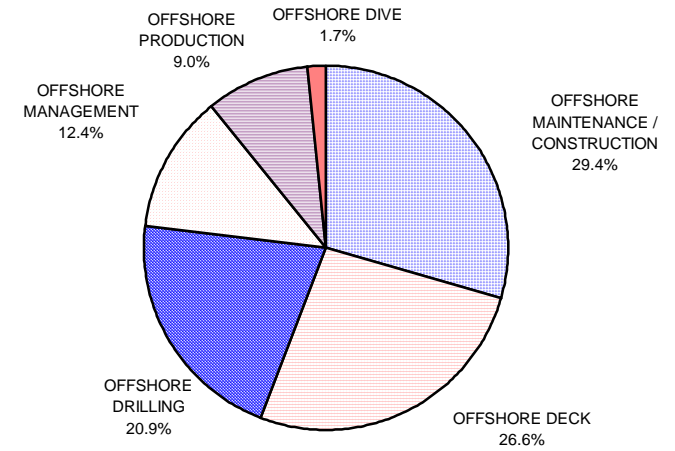


Fig 10a ALL SEVERITIES



Figures 11 and 11a - SEVERITY OF INJURY AND AGENT OF ACCIDENT – 2005/06

Fig 11
BY SEVERITY OF INJURY

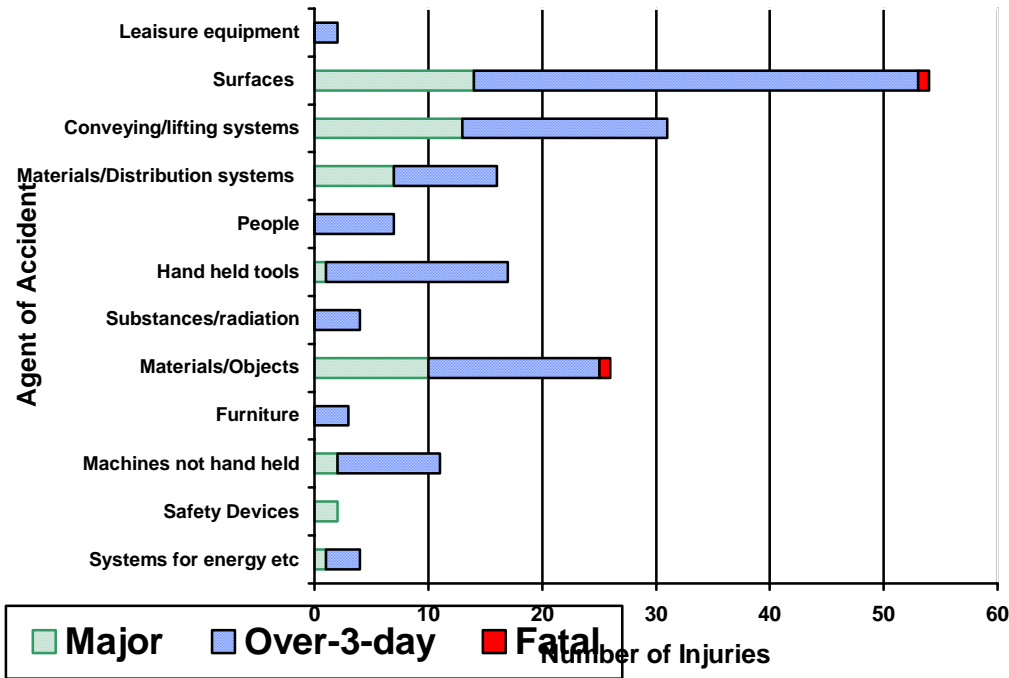
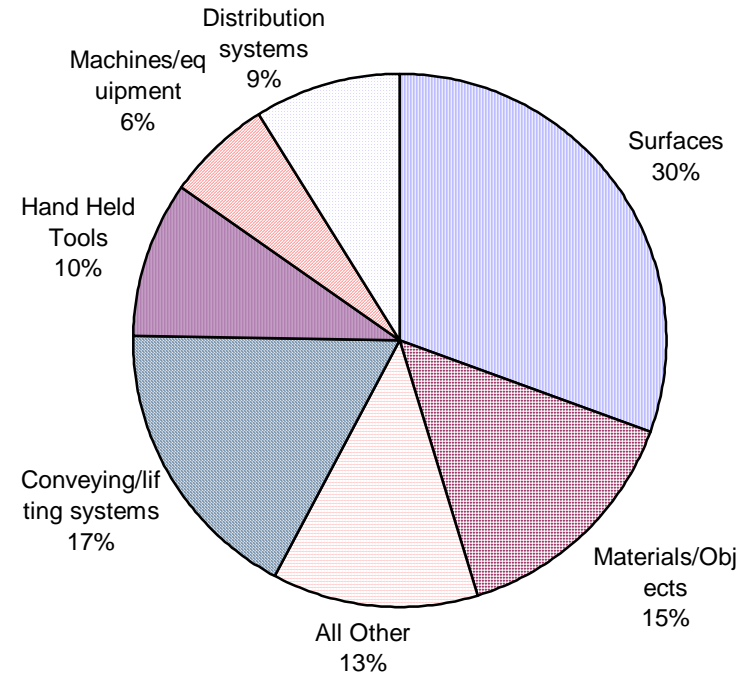


Fig 11a ALL SEVERITIES OF INJURY



Annex 2

SUMMARY OF FINALISED DATA FOR 2004/05

Table 1 - INCIDENTS AND DANGEROUS OCCURRENCES - 2004 – 2005

| | |
|-----------------------------------|-----|
| Fatalities | 0 |
| Major injuries | 48 |
| Combined fatal and major injuries | 48 |
| Over-3-day injuries | 111 |
| Dangerous occurrences | 558 |

Table 2 - INJURY RATES (per 100,000 workers) - 2004 – 2005

| | |
|--------------------------------------|--------|
| Estimated workforce | 18,940 |
| Fatal injury rate | 0.0 |
| Major injury rate | 253.4 |
| Combined fatal and major injury rate | 253.4 |
| Over-3-day injury rate | 586.0 |

Table 3 - ILL HEALTH - 2004 – 2005

| | |
|-------------------------|----|
| Occupational dermatitis | 1 |
| Chickenpox | 8 |
| Mumps | 1 |
| Scarlet fever | 1 |
| Total | 11 |