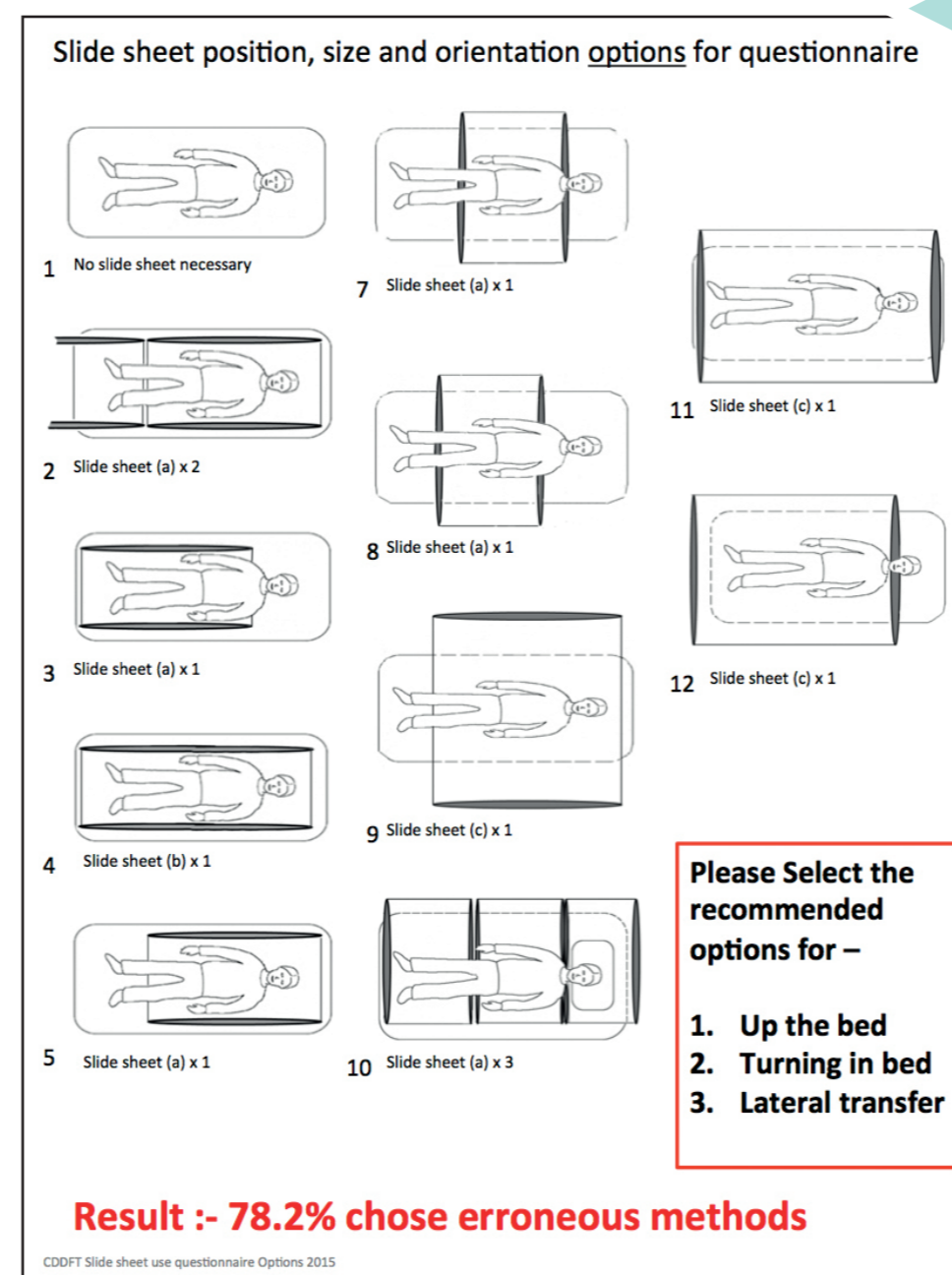
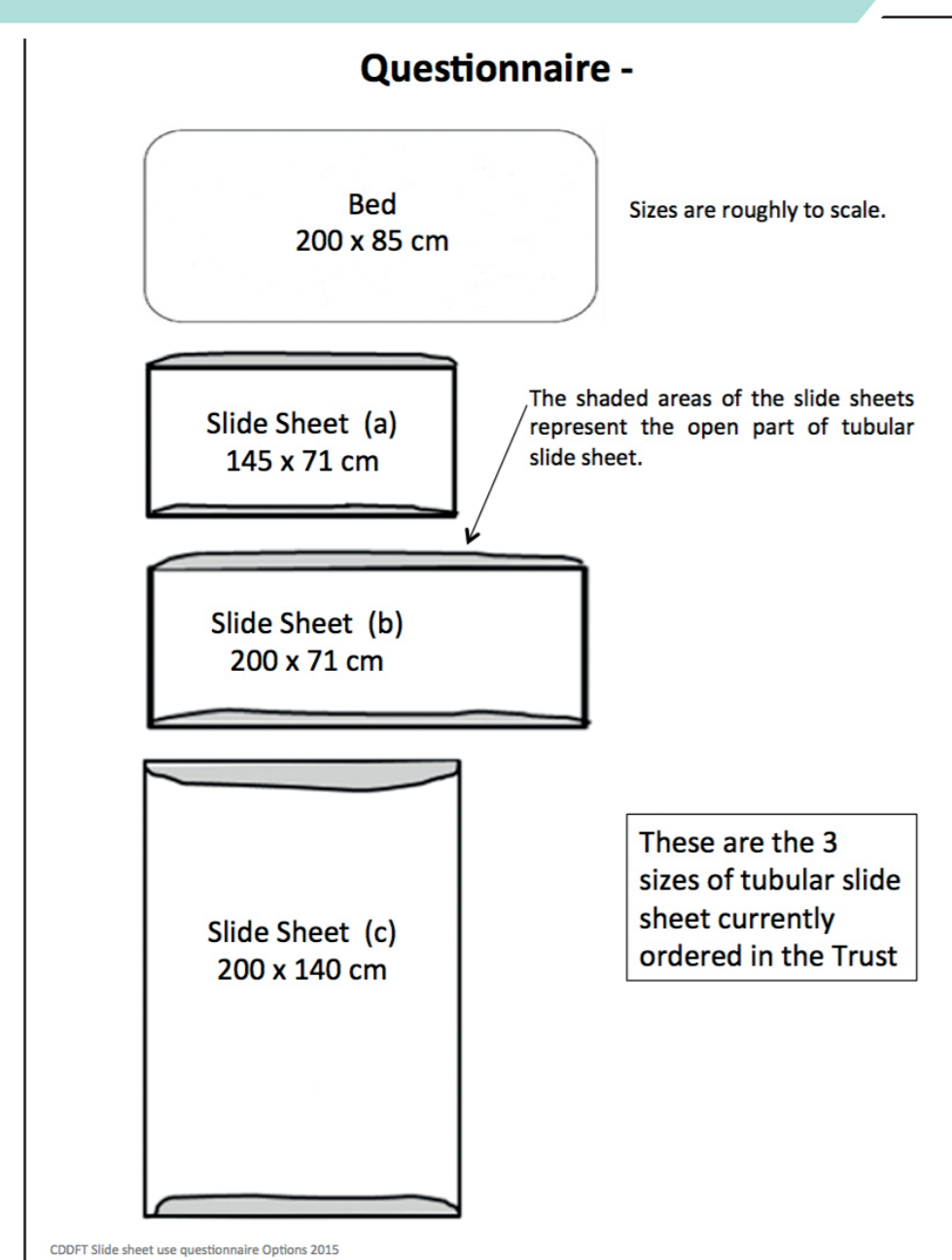


MSD Design Awards

Client: **County Durham and Darlington NHS Foundation Trust**
 Designer: **Diane Hindson (staff member CDDFT)**

BEFORE



Poor compliance with patient bed repositioning that involved 3 types of slide sheet and 3 repositioning movements.

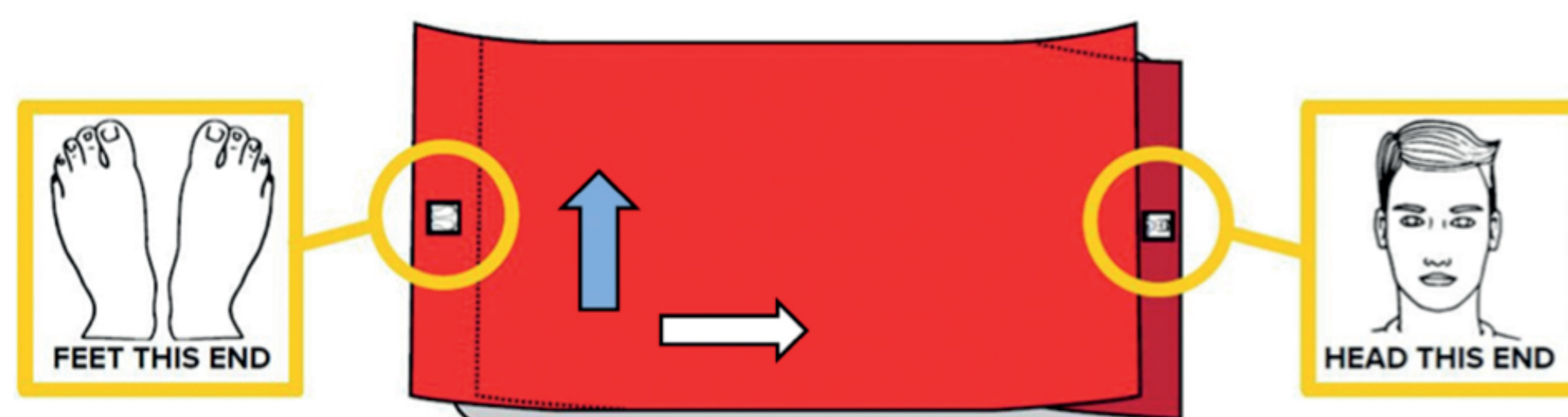
increased risk and number of incidents

Staff survey showed confusion regarding best positioning of slide sheet for the repositioning tasks with 78% providing at least one incorrect answer. (n=170)

AFTER

The innovative design – Versal

One placement for all repositioning tasks
 (reducing confusion and risks from friction / shear)



- Tubular for lateral movement ↑
- Side splits for upward movement →
- Head and foot end fabric over laps to facilitate upward movement

Innovative design to enable repositioning in multiple directions with the same, ONE placement no matter the repositioning task.

Staff survey showed uncertainty/confusion reduced from 78% to 4% (n=40)

Trust Bed handling incidents reduced by 80% and moving and handling RIDDORs by 75%

Loughborough research (Fray et al 2017) showed the Versal could halve the forces involved in incorrect patient transfers using the previous 3 sheet options

Improves patient care, experience, dignity, safety and comfort.



“The new slide sheet (Versal) is a massive improvement on the old ones, and so much easier to work with.”

