

Title: Installation of previously used domestic gas cooking appliances

Date issued: 1 April 2009

Formerly TB 185

This Technical Bulletin provides guidance to Gas Safe registered businesses/engineers when asked to relocate existing previously used domestic gas cooking appliance(s) in a kitchen or install the appliance(s) following a property move

Introduction

The Gas Safe Register Technical Helpline frequently receives enquiries about installing previously used or second-hand domestic gas cooking appliances. This generally happens when a registered business is asked to relocate an existing gas appliance in a kitchen or install the cooker following a property move. Often in these circumstances, the original appliance manufacturer's installation instructions are unavailable.

Note 1: For the purpose of this Technical Bulletin, a 'previously used' appliance is one that stays within the ownership of the gas user but may be relocated within an existing kitchen or moved from one property to another during a home move. A 'second-hand' appliance is one that is obtained in a used/refurbished state and installed for that particular gas user for the first time. There is particular legislation in place to cover the supply of second-hand gas cooking appliances; for further details of this, see [Legislation](#) below.

Note 2: for guidance on the requirement to install gas appliances (including cooking appliances) with flame supervision on all burners in flats and other multi-dwelling buildings see [TB 015](#) at: <https://engineers.gassaferegister.co.uk> - login and visit the Technical Information area.

Previously used gas cooking appliances

When a previously used gas cooking appliance needs to be reinstalled for example, either following refurbishment of a kitchen or when the gas user is moving properties, the gas cooking appliances must still be installed in accordance with the manufacturer's installation instructions.

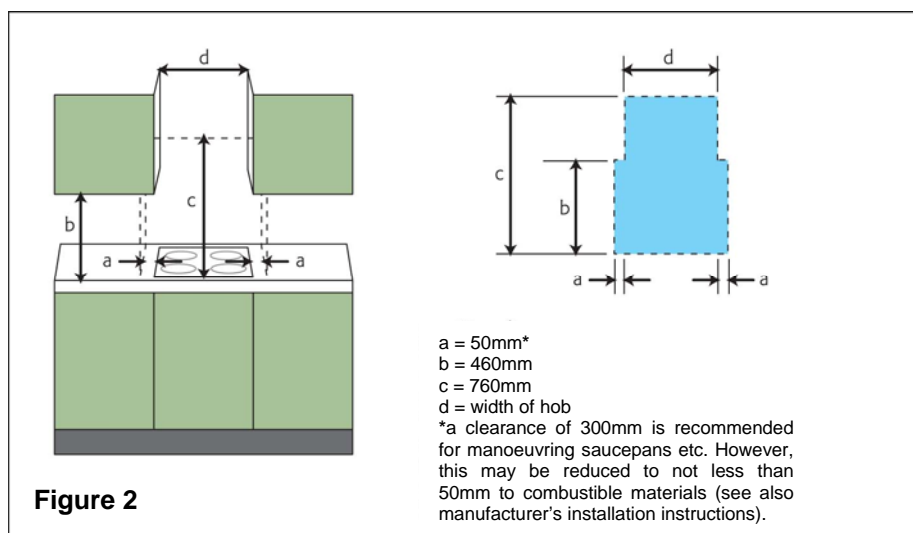
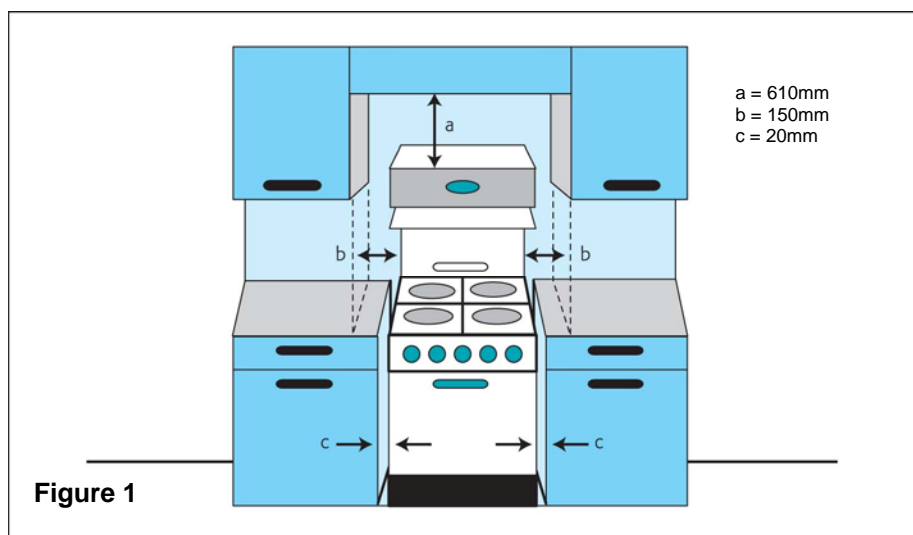
In many cases the appliance installation instructions are no longer available and therefore important installation requirements such as minimum distances from combustible materials and the location of the termination point for the gas supply will not be available. In this situation, where the appliance manufacturer's installation instructions are not available, before the gas cooking appliance is installed, the appliance manufacturer should be consulted to ascertain if the installation instructions are still available and if so, what the specific installation requirements are.

If the appliance manufacturer is no longer in existence or any specific requirements cannot be identified, it is acceptable for Gas Safe registered engineers to install the appliance in accordance with the installation methods described in the current British Standard – BS 6172⁽¹⁾.

BS 6172⁽¹⁾ identifies the important requirements that need to be followed when installing a domestic gas cooking appliances including:

- design and planning;
- installation;
- siting and clearance requirements;
- ventilation;
- gas connections;
- stability devices.

One of the first requirements that need to be considered will be the minimum clearances from combustible materials and these are outlined in Figures 1 and 2 below.



With regard to the termination point of the gas supply, where specific guidance cannot be obtained from the appliance manufacturer, it is recommended that the termination point be securely fixed to the fabric of the building immediately behind the appliance at a height of approximately 750mm from floor level.

Note 3: For guidance on contractor responsibilities when disconnecting and reconnecting gas cooking appliances fitted with a bayonet fitting, or other self-sealing connectors, see *TB 025* at: <https://engineers.gassaferegister.co.uk> - login and visit the Technical Information area.

Second-hand gas cooking appliances

When a registered business is requested to install a second-hand gas cooking appliance, it should only be installed where the appliance manufacturer's installation instructions are available.

Legislation

The Gas Cooking Appliances (Safety) Regulations 1989, prohibit the supply of gas cooking appliances which do not comply either with the requirements specified in the Regulations or with the safety requirements required of BS EN 30-1-1⁽²⁾, BS 5386: Part 3⁽³⁾, or BS 5386: Part 4⁽⁴⁾ (as appropriate).

The requirements of the Regulations include provisions concerning risks of injury arising from the escape of gas, the combustion of gas, surface temperatures of parts of the appliance, breakage of components made of glass, incorporation of components with sharp edges and the stability of the appliance and additionally, provisions relating to markings, warnings and instructions for installation, maintenance and use.

With reference to instructions, the seller of the appliance needs to provide the purchaser with a copy of the installation instructions together with the appliance.

Decision process flowchart

To make the decision process easier for Gas Safe registered engineers, [Appendix 1](#) on page 4 of this Technical Bulletin can be followed.

Bibliography

(1) BS 6172 – Installation and maintenance of domestic gas cooking appliances (2nd and 3rd family gases) – Specification

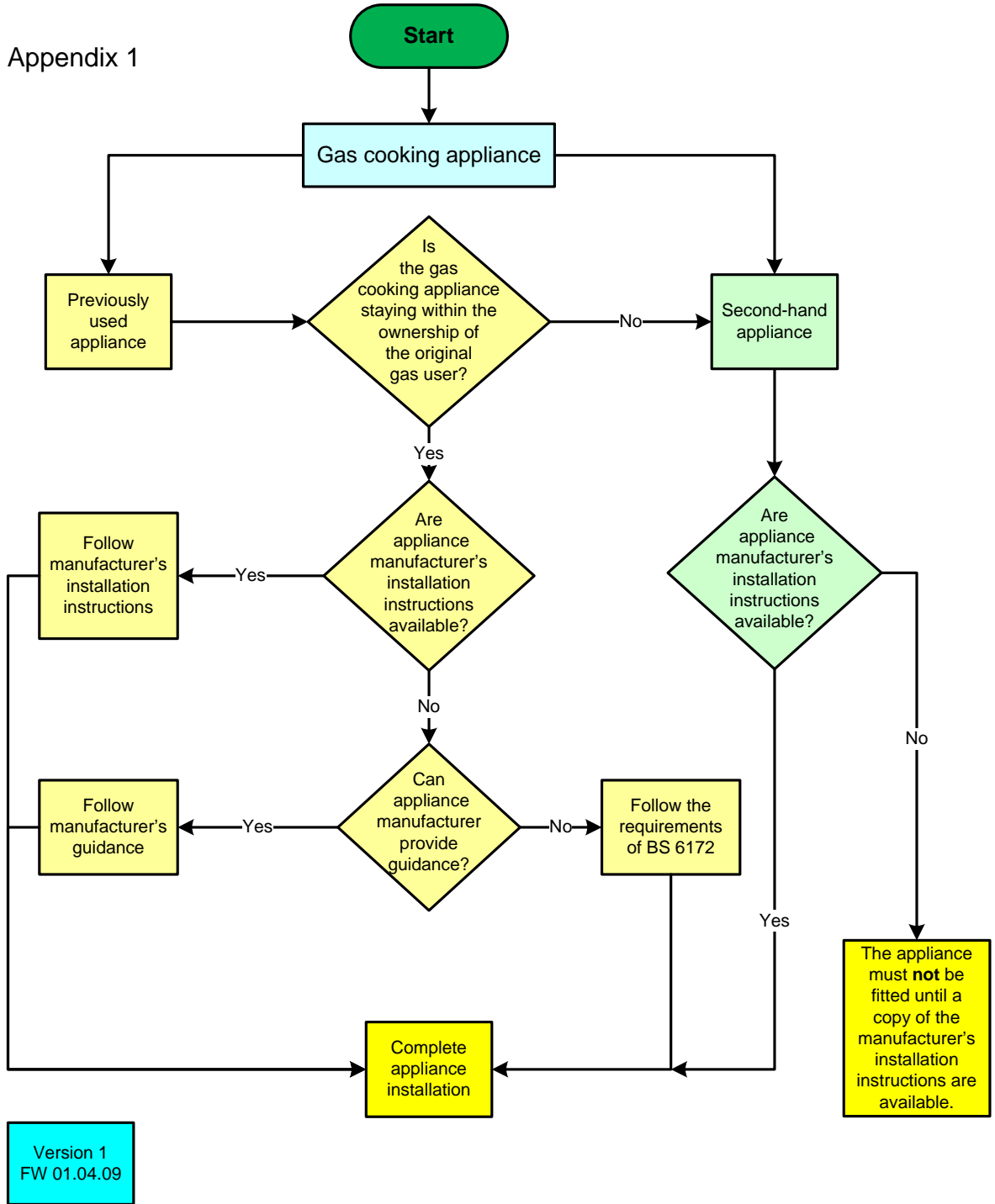
(2) BS EN 30-1-1 – Domestic cooking appliances burning gas Part 1-1: Safety — General

(3) BS 5386: Part 3 – Specification for gas burning appliances. Domestic cooking appliances burning gas

(4) BS 5386: Part 4 – Specification for gas burning appliances. Built-in domestic cooking appliances

-o0o-

Appendix 1



Version 1
FW 01.04.09