

---

# **Workplace Transport Statistical Overview**

**Kate Sweeney,  
HSE Statistics Branch**

# Outline of presentation

---

- Reported injuries (2001/02-2004/05)
  - How many, what type, who is most at risk?
- Employers perception of risk
  - What are the most effective actions to reduce risk?
- Workers perception of risk

# The size of the problem

---

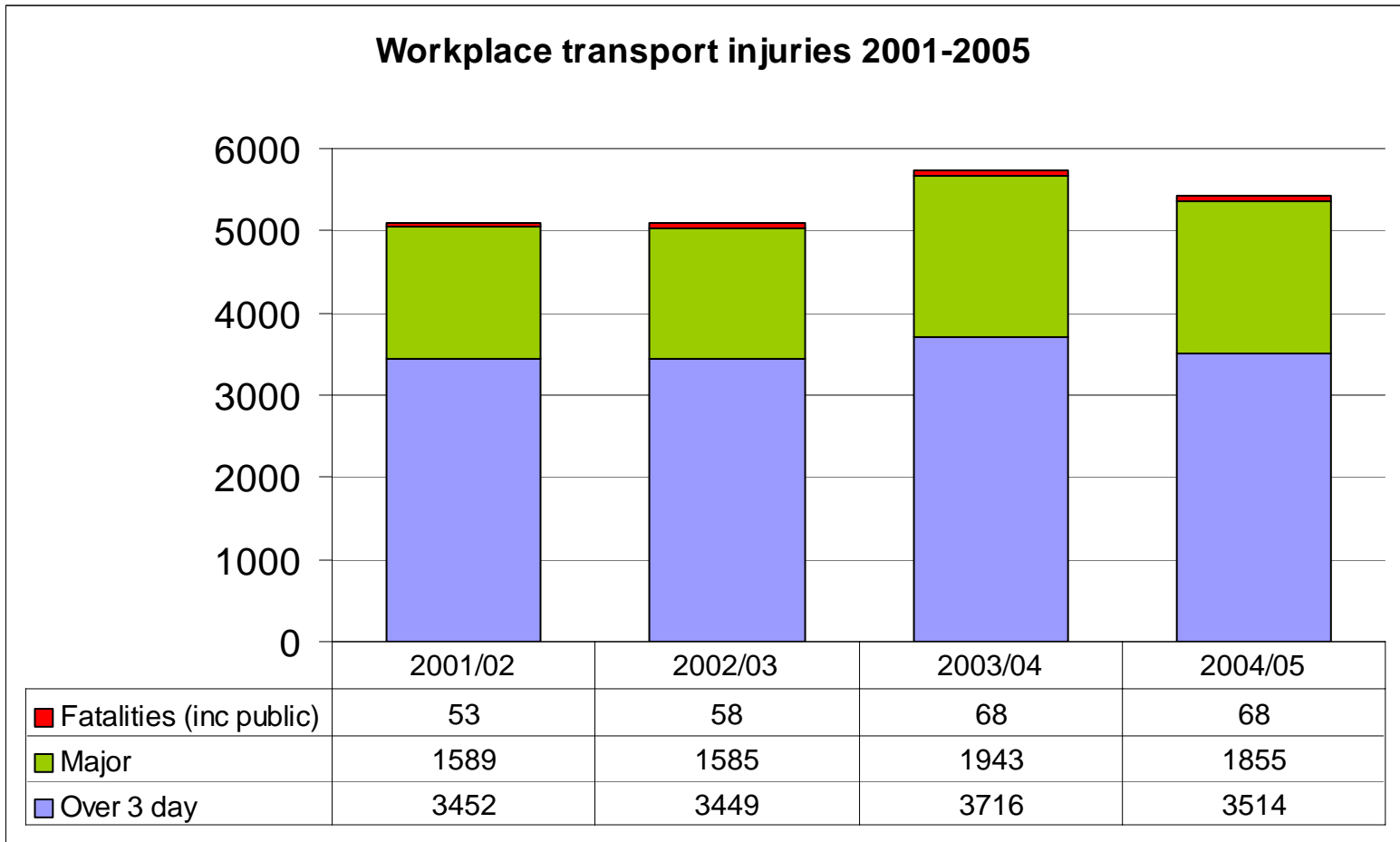
- 3 million employees work with or near vehicles as a regular part of their normal job
- 5,427 workplace transport injuries to workers were reported in 2004/05
  - 68 fatalities (including 10 to members of the public)

# Putting the figures in context

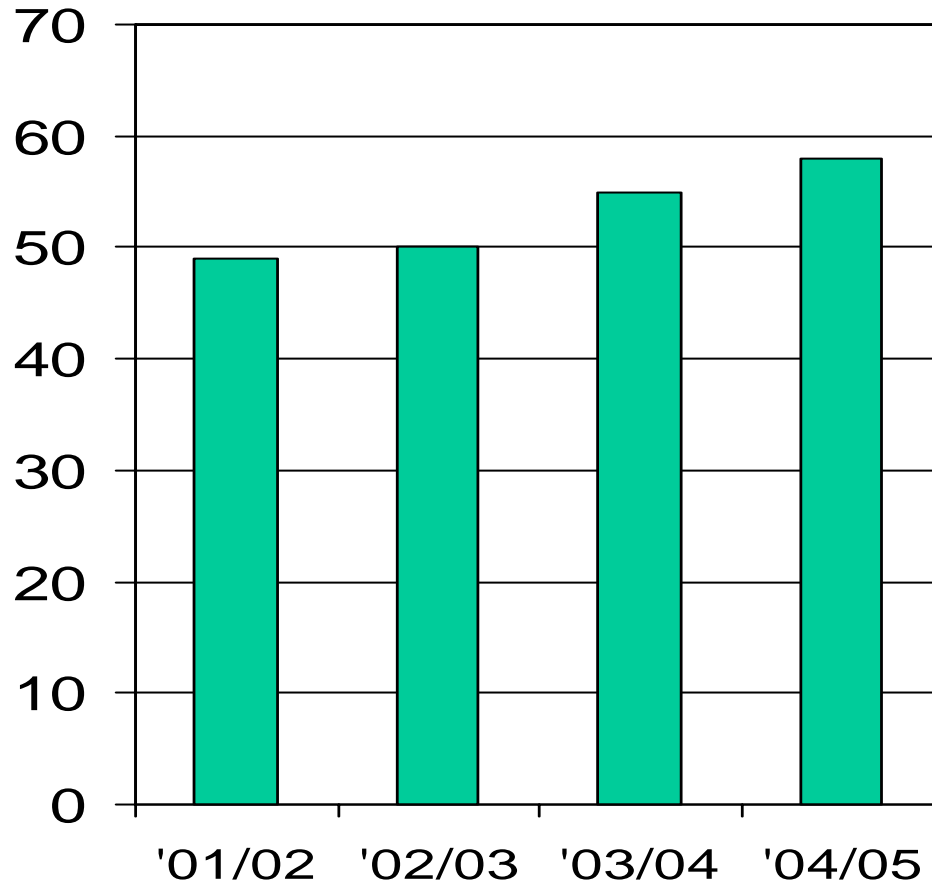
---

- In 2004/05, workplace transport injuries accounted for
  - 4% of all injuries reported
  - 6% of all MAJOR injuries reported
  - 31% of all fatalities
- A workplace transport injury is more likely to lead to a serious or fatal injury

# Injury trends – by severity



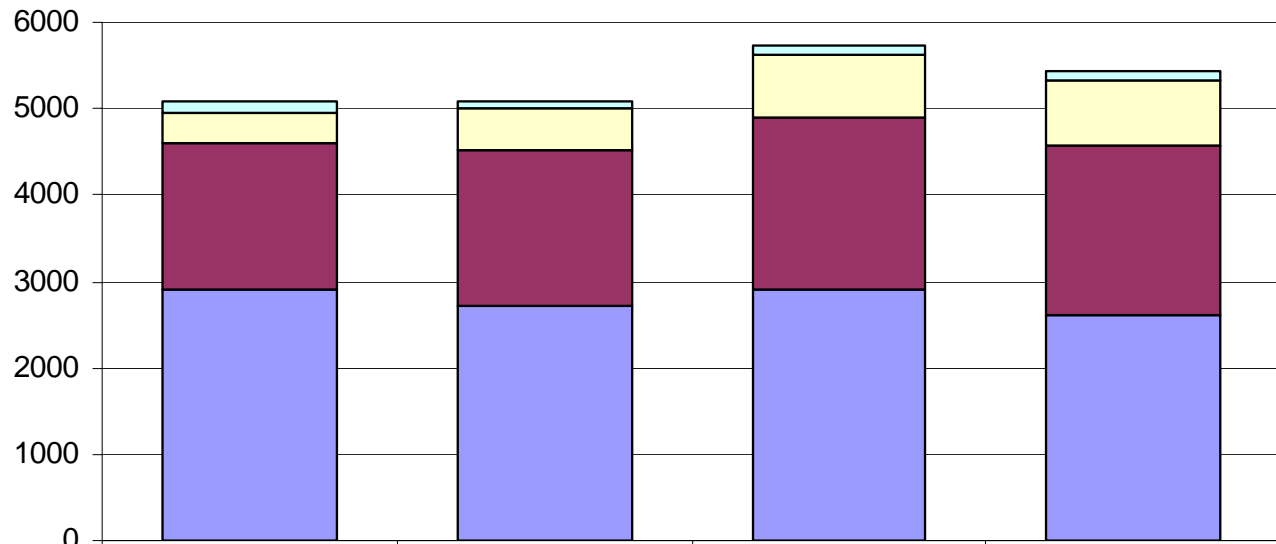
# Fatalities to workers



- Gradual increase in fatalities to workers since 2001.

# Injury trends – by kind of accident

**Workplace transport injuries 2001-2005**



	2001/02	2002/03	2003/04	2004/05
Overturn/Collapse	137	88	96	98
Hit by falling object	354	491	729	760
Fall from vehicle	1684	1786	1999	1982
Hit by moving vehicle	2919	2727	2903	2597

# Types of vehicle involved in accidents at work

---

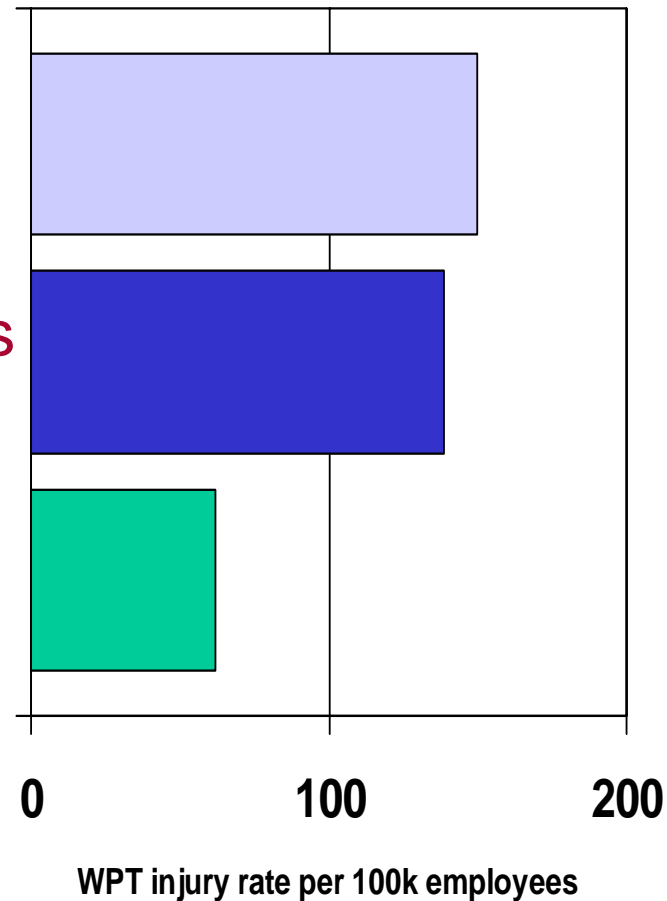
- 24% of accidents are from fork lift trucks
- 12% from LGVS
- 9% from cars
- 8% from trailers
- Generally speaking, the larger the vehicle, the higher the chance that an injury will be classified as a major



# At risk industries – high rates and high numbers



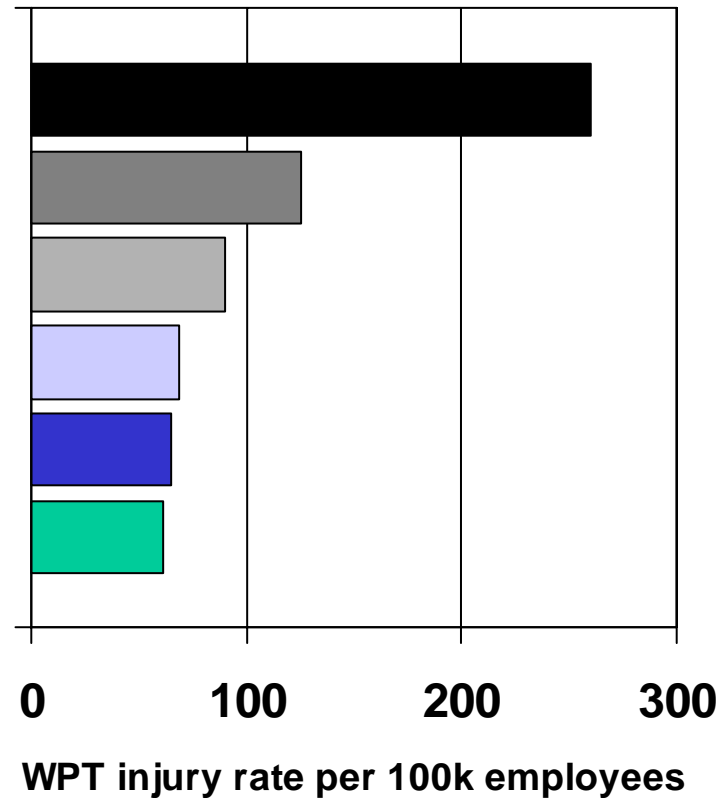
- Transport support activities e.g. cargo handling & storage
- Land transport (railways & roads)
- Food manufacturing



# At risk industries – high rates but relatively low numbers



- Recycling
- Sewage & refuse
- Mining & quarrying
- Wood/furniture man
- Forestry
- Water transport



# At risk occupations

---

- Over half the workplace transport injuries fall into 5 occupations
  - Handling & storage (18%)
  - LGV drivers (14%)
  - General transport workers (8%)
  - Postal workers/couriers (4%)
  - Refuse collection (4%)
- 70% of injuries are to non-drivers

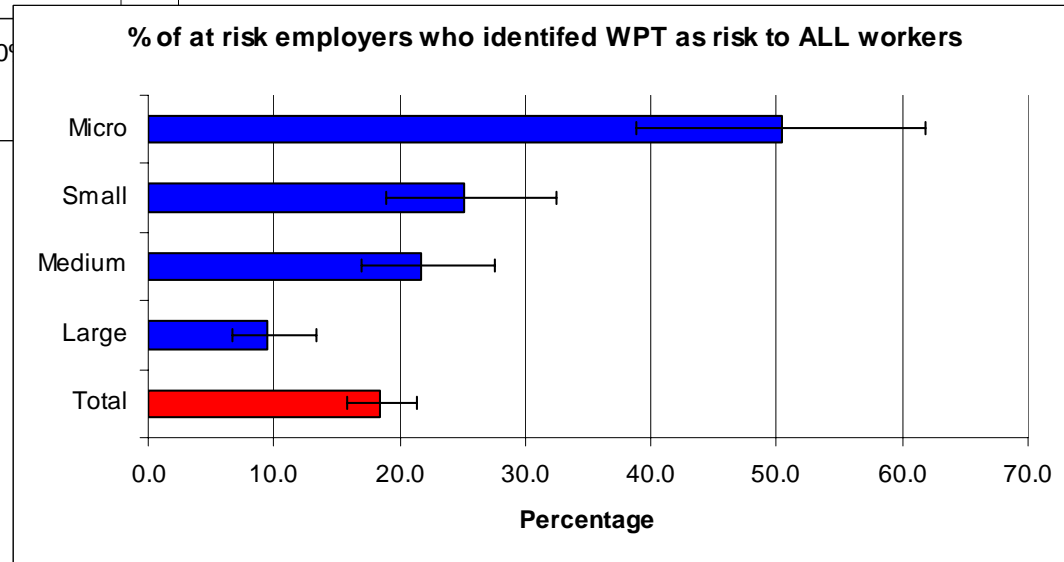
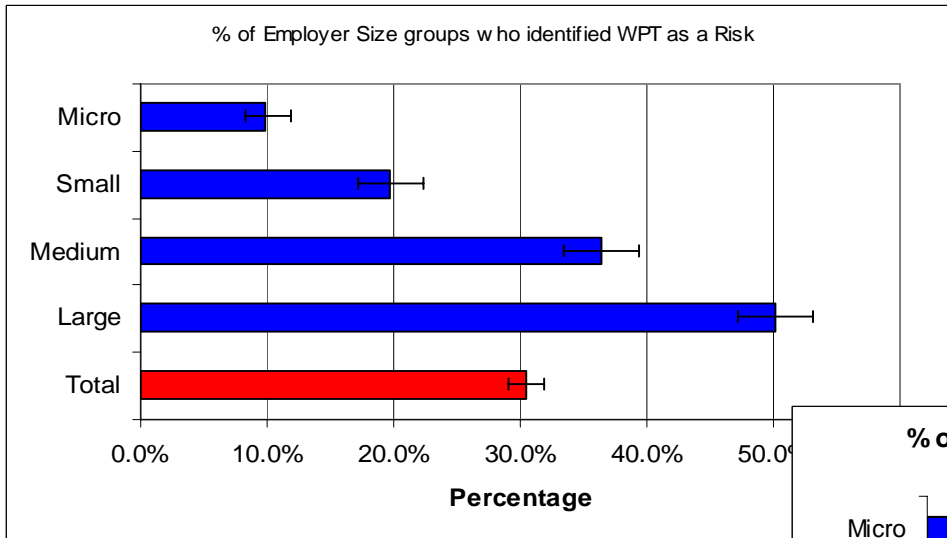
# What do the employers say?

1500 employers who said that their employees were at risk of transport related injuries were surveyed in autumn 2005 as part of HSEs wider 'Fit3' employer survey

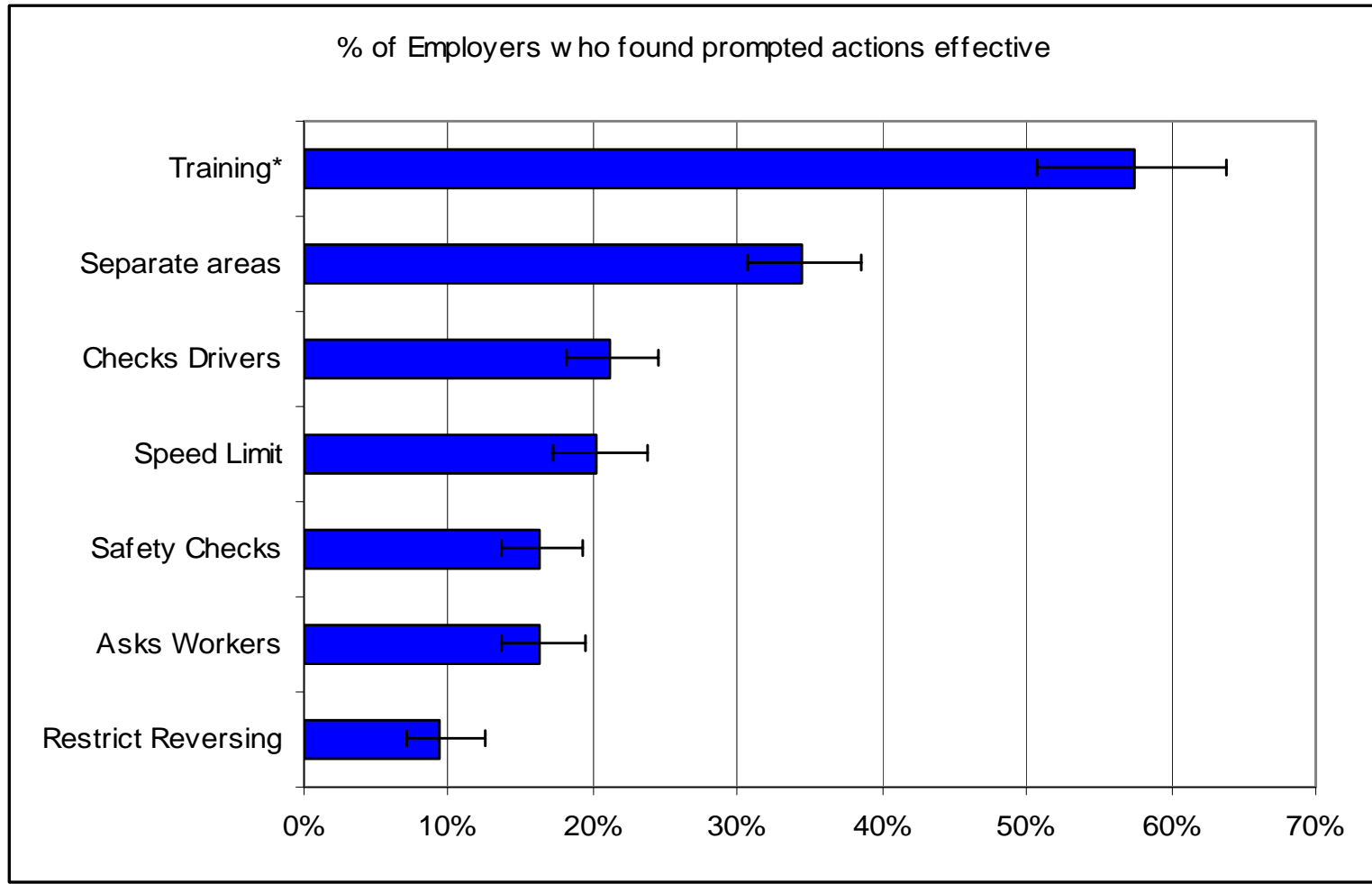
# Perception of risk by size of business



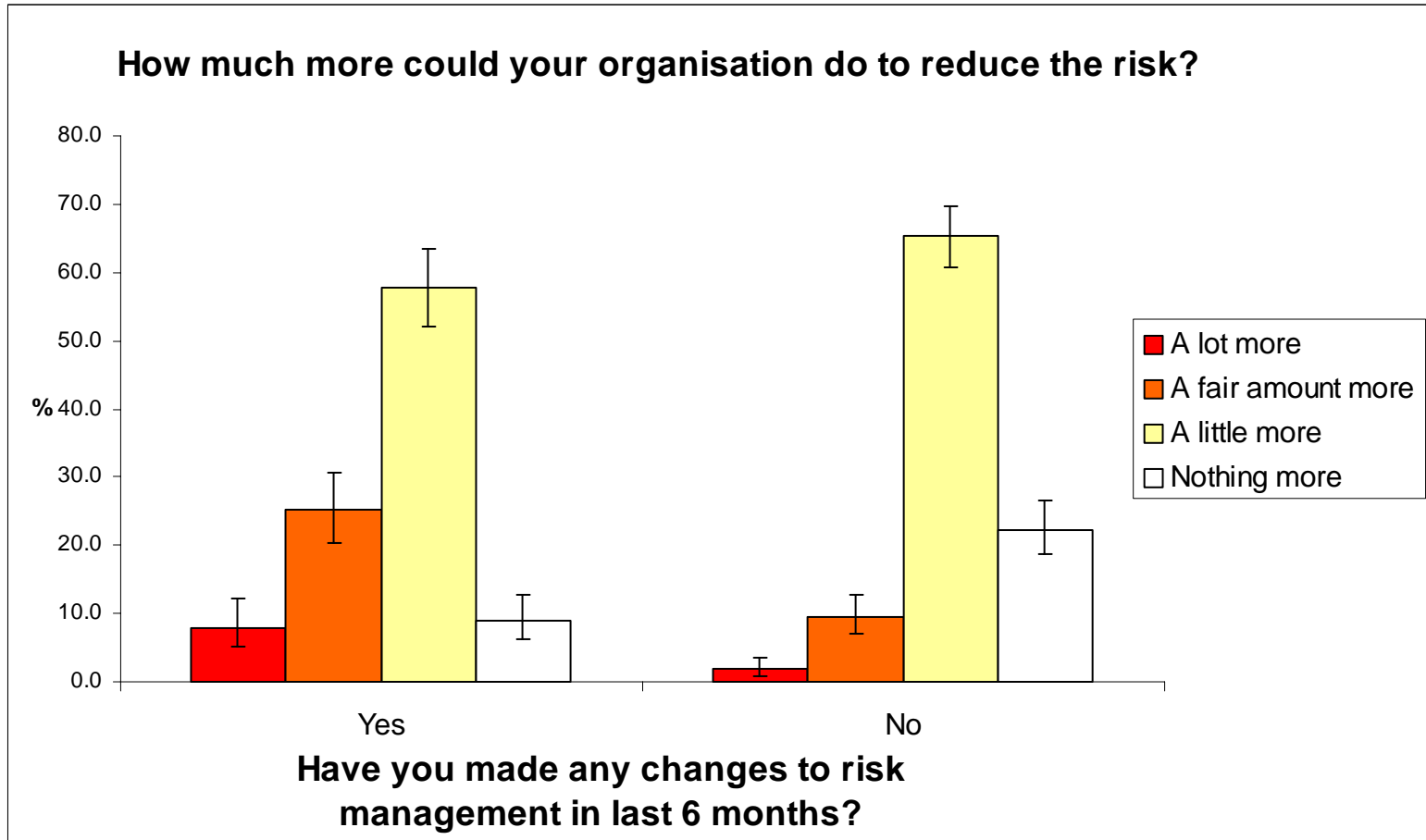
- Perception of risk increases with firm size but small firms more likely to say risk applies to all workers



# Most effective actions to reduce risk



# Change mentality



# What do the workers say?

Results from a survey of  
9,000 individuals at home  
(Fit3 worker survey)



## At risk groups

---

- 21% of employees say they work with or near vehicles as part of their normal work
  - Of these, 37% say they are exposed all day, 20% say several times per day
- 18% say they load or unload goods from vehicles
- 13% say they drive for 4 or more hours per day

# Perception of risk

---

- 38% of employees working with or near vehicles say they are very or fairly concerned about the accident risk
  - Of these 92% said they were sure they knew how to minimise the risk
- 69% said that their employers could do nothing more to reduce the risk

# Safety checks & training

---

- 45% said they had never had a safety check by a manager or supervisor
- 28% said they had had one in the last month
- 53% had had training on risk avoidance
  - Of these, 52% said this training had help a lot to reduce the risk

# Summary of key points (1)

---

- Although Workplace Transport injuries form a fairly small part of all accidents at work, they are more likely to be serious injuries and much more likely to lead to fatalities
- The number of WPT injuries has been fairly stable in recent years
- Key industries and occupations dominate the WPT accident statistics
- Fork-lift trucks are the most common cause of WPT accidents

## Summary of key points (2)

---

- A third of employers believe their employees are at risk of WPT injury
- A fifth of employees say they work with or near vehicles
- Both employers and workers identify training as a key activity to reduce the risk of accidents