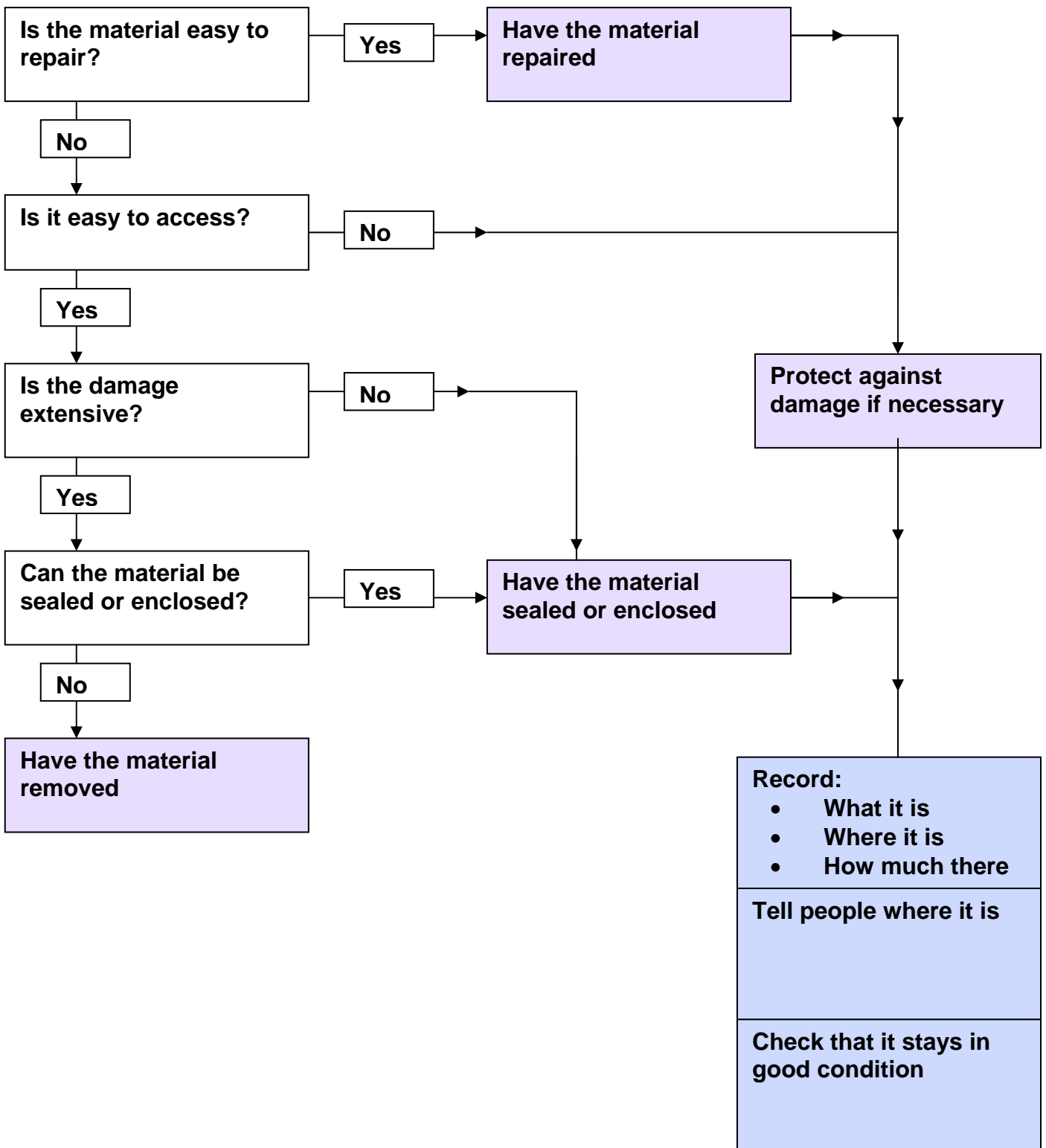


Dealing with asbestos insulating board (AIB), millboard, marine board, insulating blocks, etc



Notes

Easy to repair

- slight damage, eg a broken corner,
- repair limited to patching up small areas

For example, spray with PVA and a sealant paint. Cover the damage. Undamaged AIB should be sealed.

Access

- easy to get at
- vulnerable to damage eg by impact, by vandals, by working nearby

Damage - slight or extensive

Where damage is slight such as small cracks in the board or a deteriorated surface finish, remedial work may be unnecessary. Review this decision if circumstances change.

Where the damage is more extensive (eg panel cracked across) but material is generally sound, it may be right to seal or enclose.

For extensive damage such as broken or crumbling material with debris on the floor, removal is the solution.

Enclosure

This means a physical barrier to prevent the asbestos being disturbed, eg

- an airtight panel in front of the material - sealed edges, corners, or
- bollards or barriers to prevent impact damage

Sealed enclosure is a poor option if you need access to the material, or if water damage is likely.