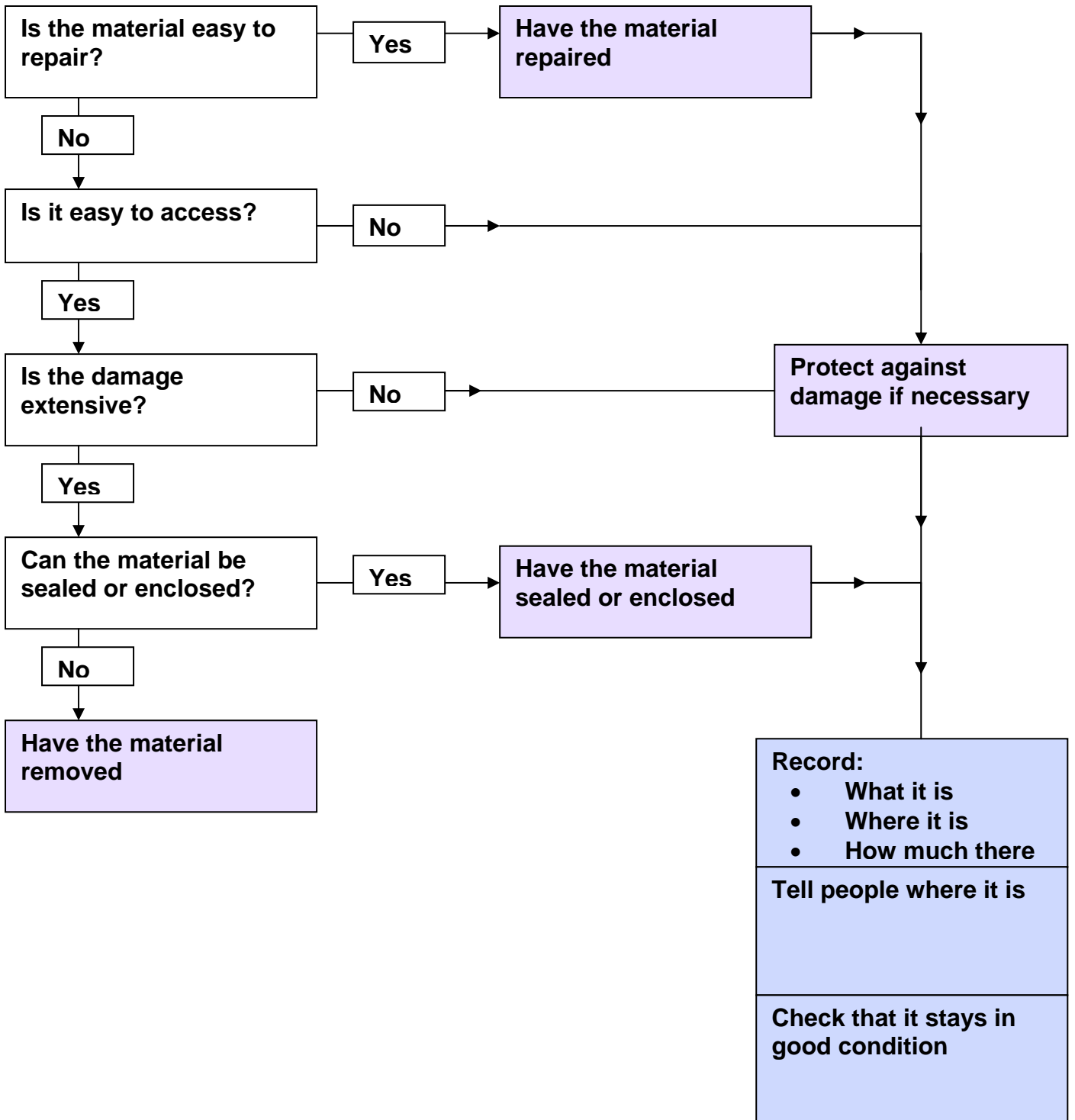


Dealing with textured coatings, etc



Notes

Textured coatings are 'encapsulated in a matrix' and do not release fibres easily.
Avoid abrasive treatments!

Easy to repair

- repair limited to patching up small areas

For example, paint over with sealant paint.

Access

- easy to get at
- vulnerable to damage eg by impact, by vandals, by working nearby

Damage - slight or extensive

Where damage is slight such as small cracks in the coating that do not impair its performance, remedial work may be unnecessary.
Review this decision if circumstances change.

Where the damage is more extensive (eg cracked surface) but the material is generally sound, it may be right to seal with paint.

For extensive damage such as water-damaged coating, removal is the solution.

Enclosure

This means a physical barrier to prevent the asbestos being disturbed, eg

- a panel in front of the material, or
- skimming over with a proprietary product

If skimmed over, record that there is an asbestos coating under the new surface.