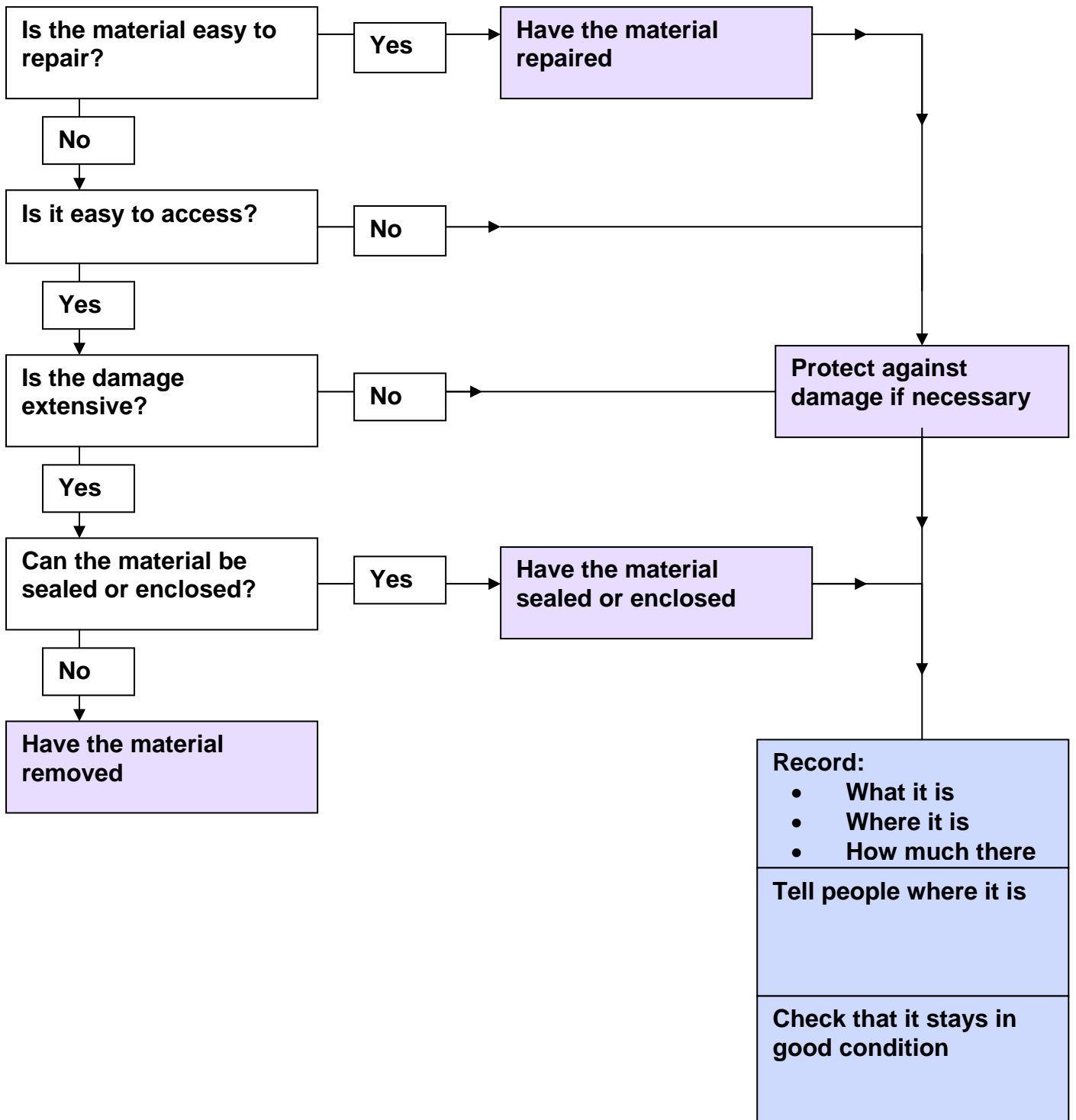


# Dealing with asbestos cement sheets and products, including asbestos-containing plastic products



## Notes

These materials are 'encapsulated in a matrix' and do not release fibres easily.  
Avoid burning or abrasive treatments!

### Easy to repair

- repair limited to patching up small areas

For example, seal with an alkali-resistant, water-permeable sealant.  
Impermeable sealant can cause damage to asbestos cement or impair fire resistance.

### Access

- easy to get at
- vulnerable to damage eg by impact, by vandals, by working nearby

### Damage - slight or extensive

Where damage is slight such as small cracks in the sheet or article that do not impair its performance, remedial work may be unnecessary.  
Review this decision if circumstances change.

Where the damage is more extensive (eg cracked sheet) but the material is generally sound, it may be right to seal or enclose.

For extensive damage such as broken material, or failure that impairs its performance - eg a leaking flue, water tank - removal is the solution.

### Enclosure

This means a physical barrier to prevent the asbestos being disturbed, eg

- a panel in front of the material, or
- bollards or barriers to prevent impact damage