

Health & Safety Commission (HSC)

Railway Industry Advisory Committee (RIAC)

Are The Railways Safe Enough?

Mike Lunan

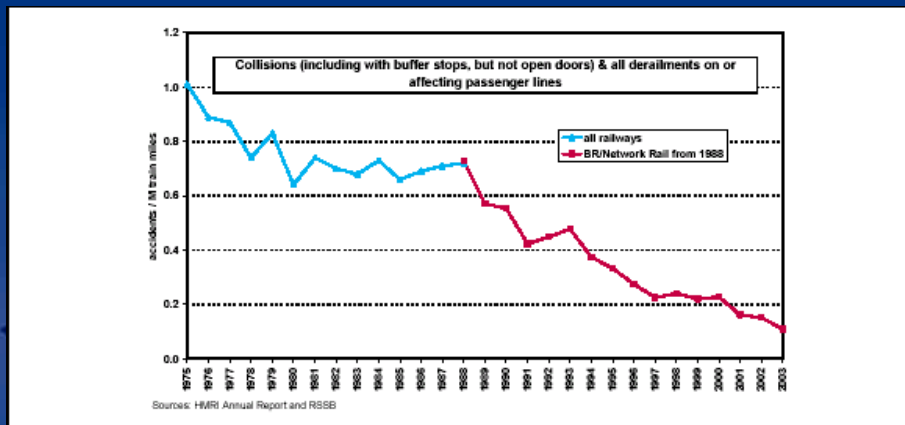
Chairman, Safety Taskforce
Rail Passengers Council



Putting Passengers First...



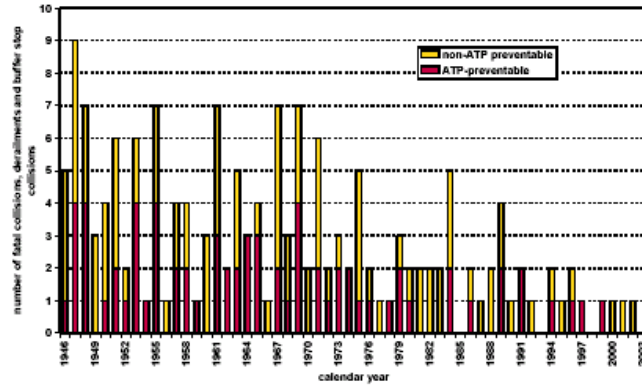
Chart 1: Significant Train Accident (STA) Rates (from 1975)



Putting Passengers First...



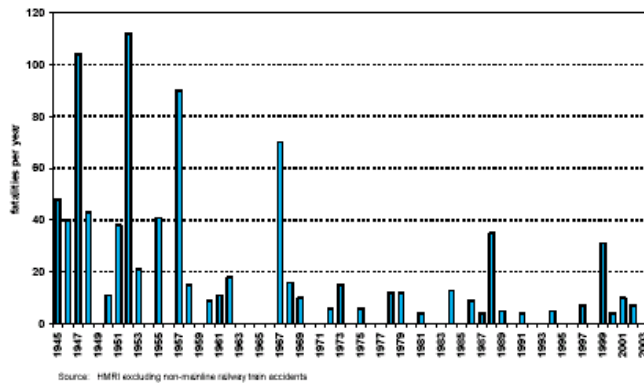
Chart 2: [Fatal Train Accidents \(Excluding Public Fatalities at Level Crossings\)](#)



Putting Passengers First...



Chart 3: [Total Fatalities in Train Accidents With 4 or More Fatalities \(from 1945\)](#)



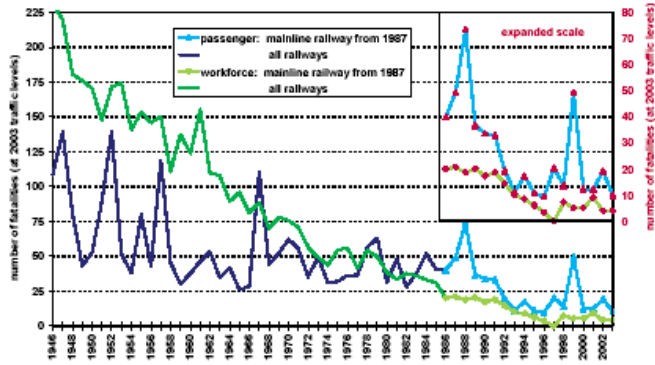
Source: HMRI excluding non-mainline railway train accidents



Putting Passengers First...



Chart 4: Reductions in Fatality Rates from 1945 (Normalised on Current Train Miles)



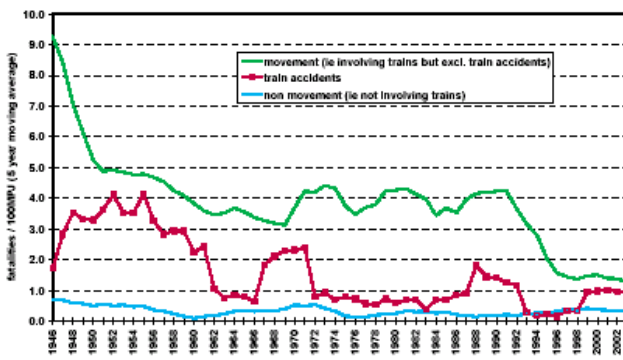
Source: Based on HMRI Annual Report data for all railways, adjusted by the RSSB to remove non-mainline railway multi-fatality, normalised by current train miles and put on a calendar year basis. From 1987 HMRI data is for mainline railway only, ie BR/Network Rail/TOCs.



Putting Passengers First...



Chart 5: Passenger Fatality Rate by Type of Accident (from 1945)



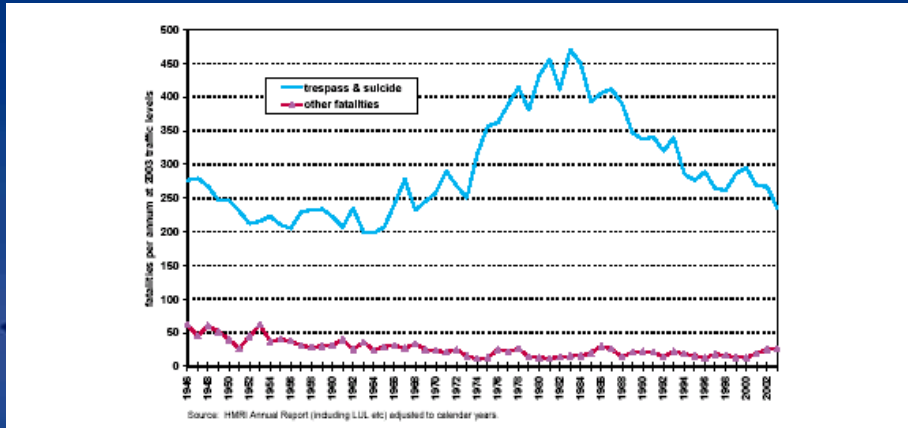
Source: HMRI Annual Report data including LUL, etc., but adjusted by the RSSB to remove non-BR/Network Rail multi-fatality throughout the period. All data adjusted to calendar year basis.



Putting Passengers First...



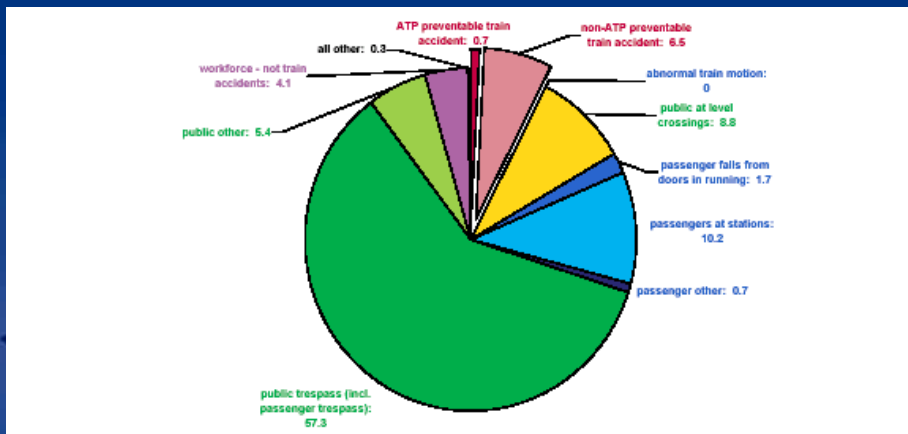
Chart 6: Public Fatality Rates Per Annum from 1945 (Normalised on Current Train Miles)



Putting Passengers First...



Chart 7: Composition of Railway Fatality Risk (95.7 fatalities)



Putting Passengers First...



Chart 8: Key Safety Facts – Fatality Summary

(based on Network Rail's Railway Safety Case scope, except where stated)

	2003	2002	2001	2000	1999	1998	1997	1996	1995
1. Total accidental	73	81	84	92	117	88	105	91	77
1A. Passenger total	10	16	11	10	47	10	20	7	8
<i>(in train accident)</i>	<i>(0)</i>	<i>(6)</i>	<i>(6)</i>	<i>(4)</i>	<i>(29)</i>	<i>(0)</i>	<i>(7)</i>	<i>(1)</i>	<i>(0)</i>
1B. Public total	60	61	62	77	65	72	85	82	62
<i>(trespassers)</i>	<i>(52)</i>	<i>(48)</i>	<i>(52)</i>	<i>(62)</i>	<i>(57)</i>	<i>(59)</i>	<i>(71)</i>	<i>(77)</i>	<i>(57)</i>
Level crossings <i>(trespassers)</i>	15	9	10	11	6	12	12	5	8
<i>(10)</i>	<i>(0)</i>	<i>(5)</i>	<i>(7)</i>	<i>(7)</i>	<i>(4)</i>	<i>(4)</i>	<i>(3)</i>	<i>(3)</i>	<i>(3)</i>
Not at level crossings <i>(public non trespassers)</i>	45	53	52	66	58	60	73	77	54
<i>(36)</i>	<i>(45)</i>	<i>(40)</i>	<i>(58)</i>	<i>(47)</i>	<i>(47)</i>	<i>(61)</i>	<i>(62)</i>	<i>(46)</i>	<i>(39)</i>
<i>(Passenger trespassers)</i>	<i>(3)</i>	<i>(5)</i>	<i>(4)</i>	<i>(5)</i>	<i>(5)</i>	<i>(5)</i>	<i>(6)</i>	<i>(3)</i>	<i>(0)</i>
<i>(16)</i>	<i>(3)</i>	<i>(7)</i>	<i>(3)</i>	<i>(9)</i>	<i>(3)</i>	<i>(6)</i>	<i>(12)</i>	<i>(9)</i>	<i>(9)</i>
1C. Workforce total	3	4	11	5	5	6	0	2	7
On NRCI <i>(trackside)</i>	3	4	9	2	5	6	0	2	4
<i>(0)</i>	<i>(2)</i>	<i>(4)</i>	<i>(2)</i>	<i>(2)</i>	<i>(6)</i>	<i>(0)</i>	<i>(1)</i>	<i>(2)</i>	<i>(2)</i>
Working off NRCI <i>(trackside)</i>	0	0	3	3	0	0	0	0	3
<i>(0)</i>	<i>(0)</i>	<i>(0)</i>	<i>(2)</i>	<i>(0)</i>	<i>(0)</i>	<i>(0)</i>	<i>(0)</i>	<i>(0)</i>	<i>(1)</i>
2. Total suicides / suspected suicides	179	205	190	205	204	166	157	159	161
Public	178	204	188	203	201	165	156	156	160
Passenger	0	1	4	2	3	1	1	3	1
3. Total fatalities	252	296	274	297	321	254	262	250	239
Murders *	0	2	0	0	2	1	0	0	3

* Murders are excluded from the total fatality figures



Putting Passengers First...



Chart 9: Fatalities in 2003 - Summary

Accidental fatalities					
Passenger	Date	Location	Region	Stn Operator	Comments
	17.01.03	Bickley station	Southern	South Eastern Trains	A male passenger fell from the platform and was struck by a train whilst under the influence of alcohol
	12.02.03	Briggand station	Great Western	First Great Western	A female staggered against the side of a train pulling into the station and fell beneath
	03.03.03	Luton Airport Parkway station	Midland	Thameslink	A man was struck by a train after wandering off the platform whilst half asleep
	22.03.03	Wivelsfield	Southern	South Central	A drunk male alighted from a train and then tripped and fell between the departing train and the platform
	04.04.03	Manor Park	East Anglia	First Great Eastern	A man got off a train, staggered across island platform, fell onto track and was hit by non-stopping train
	11.04.03	Chislehurst tunnel	Southern	N/A	It is believed that the lady had been robbed and then was pushed or fell from the train
	14.07.03	Cobham station	Southern	South West Trains	An elderly man fell onto the track from the platform and was fatally electrocuted
	23.08.03	Woolwich Dockyard station	Southern	South Eastern Trains	A male passenger fell from the platform and was struck by a train whilst under the influence of alcohol
	14.09.03	Cottingham Station	London North Eastern	Arriva Trains Northern	An elderly female passenger fell on station footbridge, fractured hip and died six weeks later from the injuries sustained
	10.10.03	Breckley Whins	London North Eastern	Arriva Trains Northern	A male passenger fell from the platform and was struck by a train whilst under the influence of alcohol
		Sub-total	10		



Putting Passengers First...

