

---

# THE CONSTRUCTION PROGRAMME

## STRATEGIC REVIEW

**Stephen Williams**  
**Chief Inspector of Construction**

# Original Principles

---

- Bomel Influence Network
- Understanding the industry and its mechanisms
- Effectiveness and leverage
- Intervention Strategy to achieve greatest impact
  - Ownership by industry
  - Whole supply chain
  - Discretion of the field
  - Engagement and partnership
- Outcome driven
- Working with all of HSE

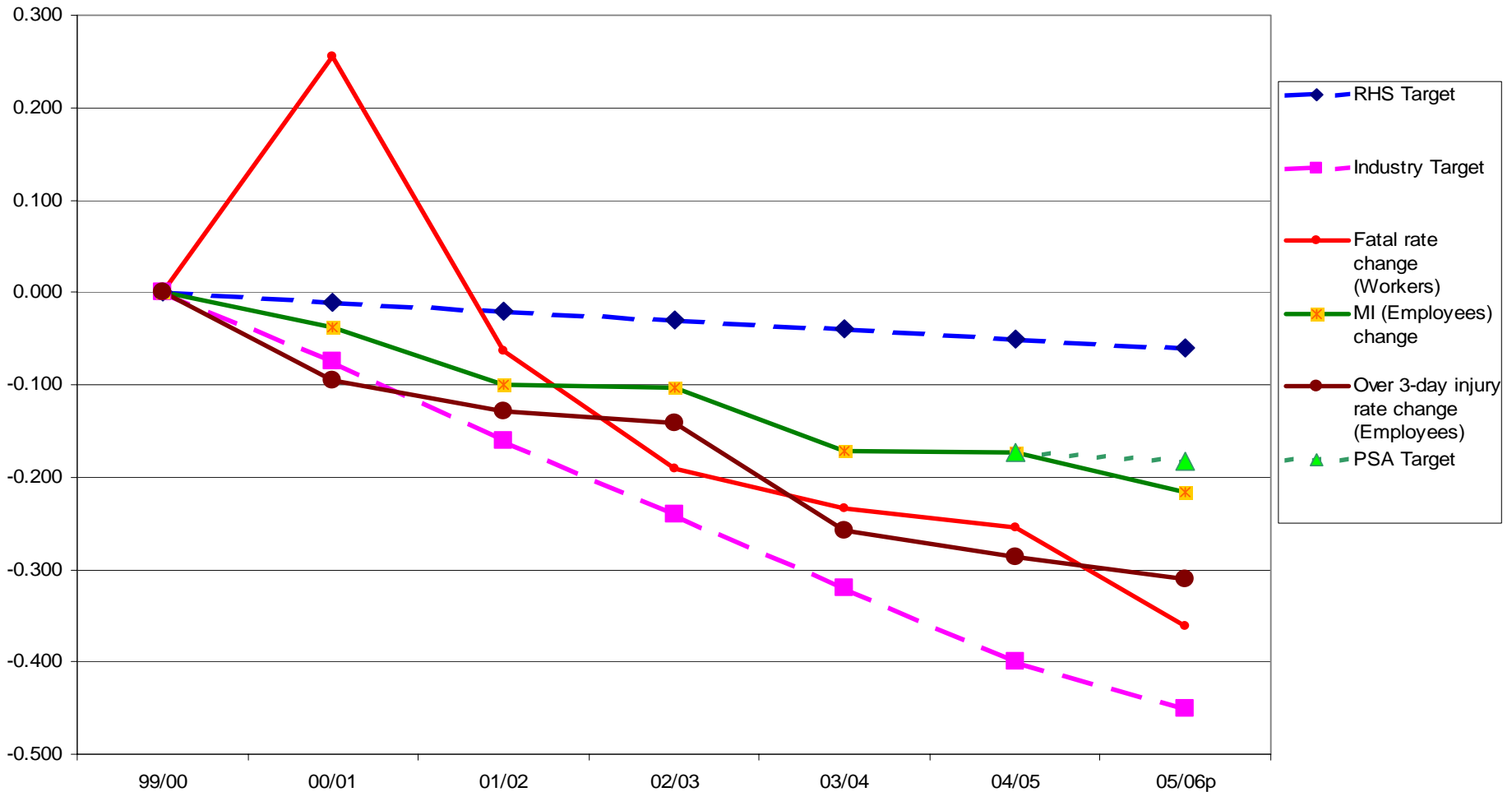
# Achievements so far . . .



- Significant progress in reducing fatalities, major injuries and over 3-day accidents
- Increased awareness of ill health
- Ownership, Leadership, Partnership
- New ways of working for HSE & Industry
- Cultural change
- Site conditions generally improved
- Better integration



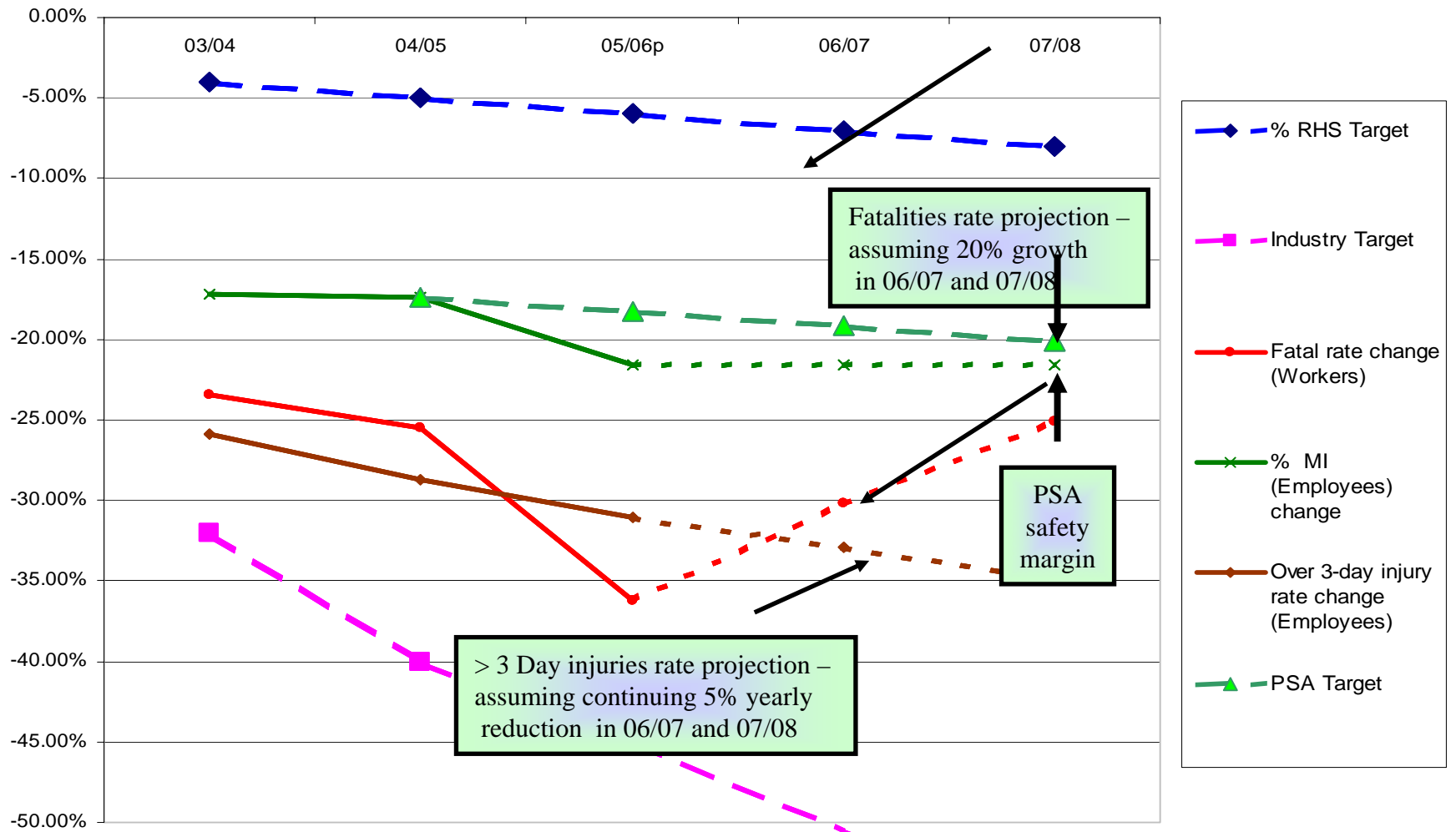
# Achievements so far . . .



# Current Situation



Major injuries rate projection  
 – assuming no change  
 in 06/07 and 07/08



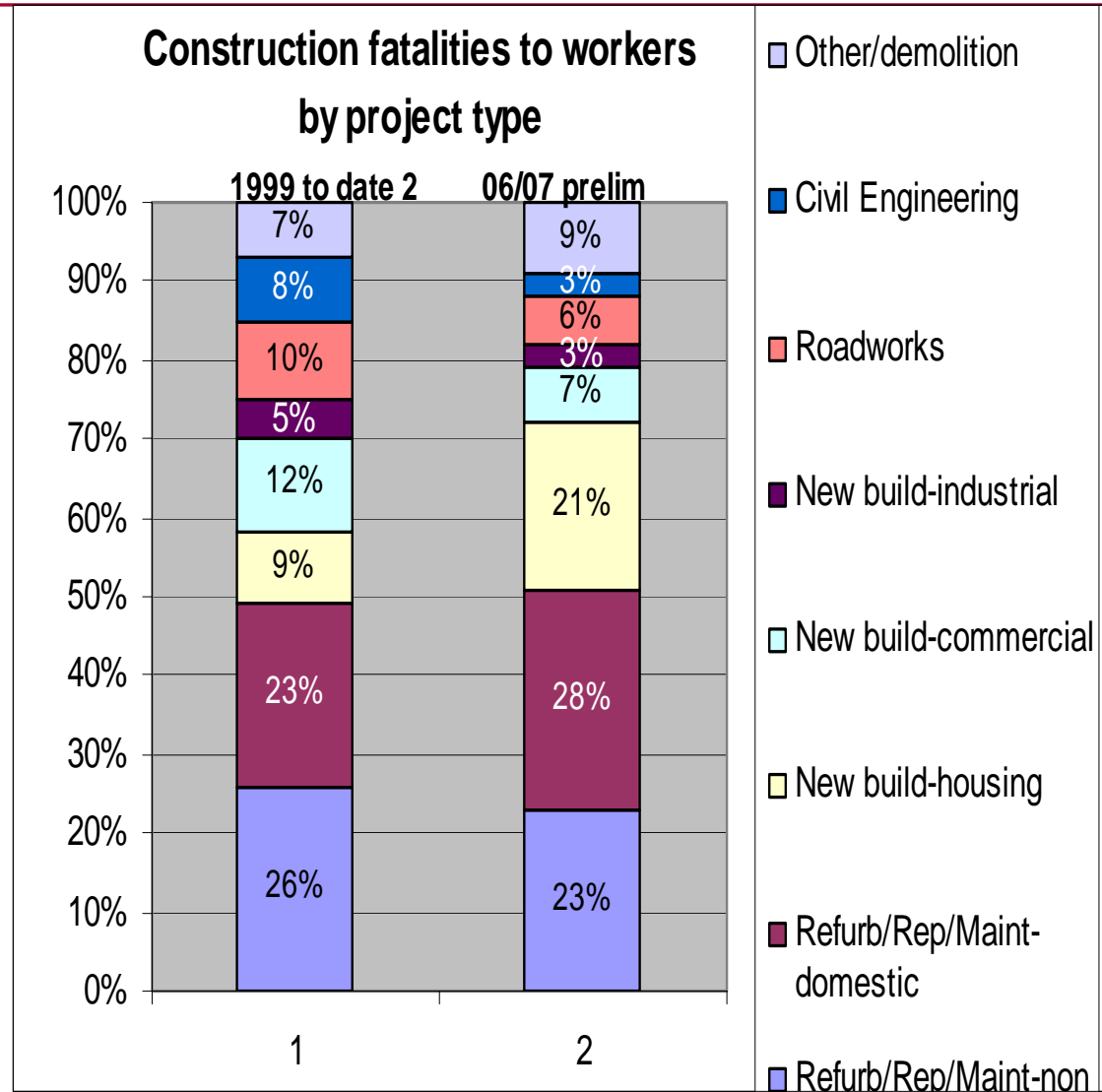
# Priorities for 2007/08

- **Sectors**

Refurbishment

Home Build

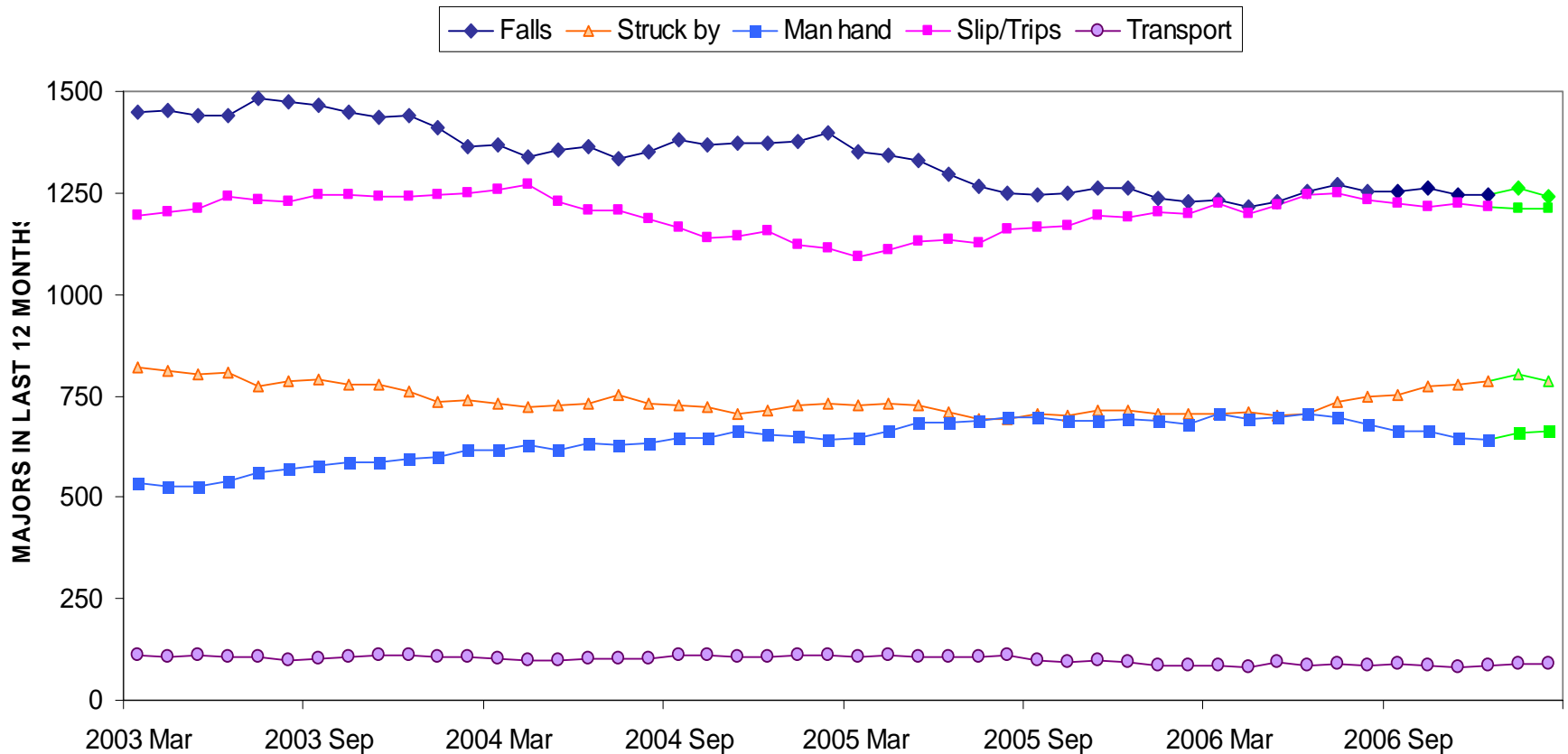
New Build Commercial



# Priorities for 2007/08



**CONSTRUCTION MAJOR INJURIES BY KIND/MONTH - ROLLING ANNUAL TOTALS**  
ICC DATABASE



**Figures for Jan/Feb 07 - likely to increase as more reports are received**

# Priorities for 2007/08



- **Topics**

CDM2007

Falls including from vehicles

Good Order (S&T)

Worker engagement

Management of Occupational Health risks



# Need for review

## Why?

- Success has slowed
- Timely
- Focus on original principles?
- Importance of the Programme
- Mixed messages

## What?

- Content & delivery of the intervention strategy
- Governance
- Continuity and change



# Keys to Success

---

- Return to first principles
- Ownership by dutyholders
- Motivating external partners
- Outcome led approach
- Influencing at the right time and at the right level
- Supply chain
- Working together
- Clarity of purpose



# Barriers to Success

---

- Diversity & scale
- Risk transfer
- Mixed messages
- Capacity & capability of the industry
- Resources

# Way forward

---

- More strategic
- Proportionate model of programme management & governance
- Reduced number of projects & refined delivery priorities
- Continuity and change
- Outcome driven

**Not just more of the same**

# Priorities

- SME and small sites engagement
- Local Authority engagement
- Vulnerable workers
- Major accident potential
- High Impact interventions



# Desired outcomes ...

---

- Reductions in accident and ill health figures
- Visible industry change
- Olympics construction delivered safely
- Difficult Stakeholders challenged
- Stakeholders support sustained
- Improved and increased working with OGDs
- Development and implementation of the key strategic projects
- Outcome led interventions
- Improvement notices?



# Challenges

---

- Maintaining momentum
- Measuring outcomes successfully

# Role of CONIAC

---

- Support HSE's work by providing advice, information, intelligence
- Working Groups where these can add value
  - Major Accident Potential – Safety WG
  - SMEs - new WG
  - Vulnerable Workers - new WG

# What we must change





---

# **CONIAC Workplan**

## **April 2007 – December 2008**

# Workplan – to cover ....

---

- Construction (Design and Management) Regulations 2007 (CDM)
- Construction Division Business Group Delivery Plan 2007/08 (BGDP)
- The Construction Programme Priorities

# BGDP 2007/08

---

- To embed and build on previous work of the Construction Programme
- Continue sustainable improvement
- Contribution to wider HSE Campaigns
- Specific Construction Intervention
- Priorities for 2007/08
  - Target sectors
  - Main topics
  - Cross-cutting themes

# BGDP 2007/08



- **Sectors**

- Refurbishment
- Commercial New Build
- Home Build

- **Topics**

- CDM2007
- Falls (inc. from vehicles)
- Good order /slips & trips
- Worker engagement
- Occupational health

# Construction Programme Priorities

---



- SME and small sites engagement
- Local Authority engagement
- Vulnerable workers
- Major accident potential
- High Impact interventions

# Continuing Working Groups

---

- Safety Working Group (WG)
- Occupational Health WG
- Working Well Together (WWT) WG

Does CONIAC wish to continue with these Groups?

# New Working Groups

---

What other Working Groups:

- SME
- Vulnerable workers

Does CONIAC agree with these new Task & Finish Groups?

# BGDP Support Work

## Work to support the Construction Division Business Group Delivery Plan (2007/08)

### Priority Sectors

- Refurbishment
- Commercial New Build
- Home Build

### Priority Topics

- CDM
- Falls (including those from vehicles)
- Good order/Trips
- Worker Engagement

**Spreading the messages and taking opportunities**

# Action from CONIAC

---

## You are invited to agree:

- The role of CONIAC is to support HSEs work by providing advice, information and intelligence
  - Working Groups where these can add value?
  - Work to support the BGDP?
- Agree CONIAC Work Plan based on presentation to be drafted by Secretariat for circulation before next meeting