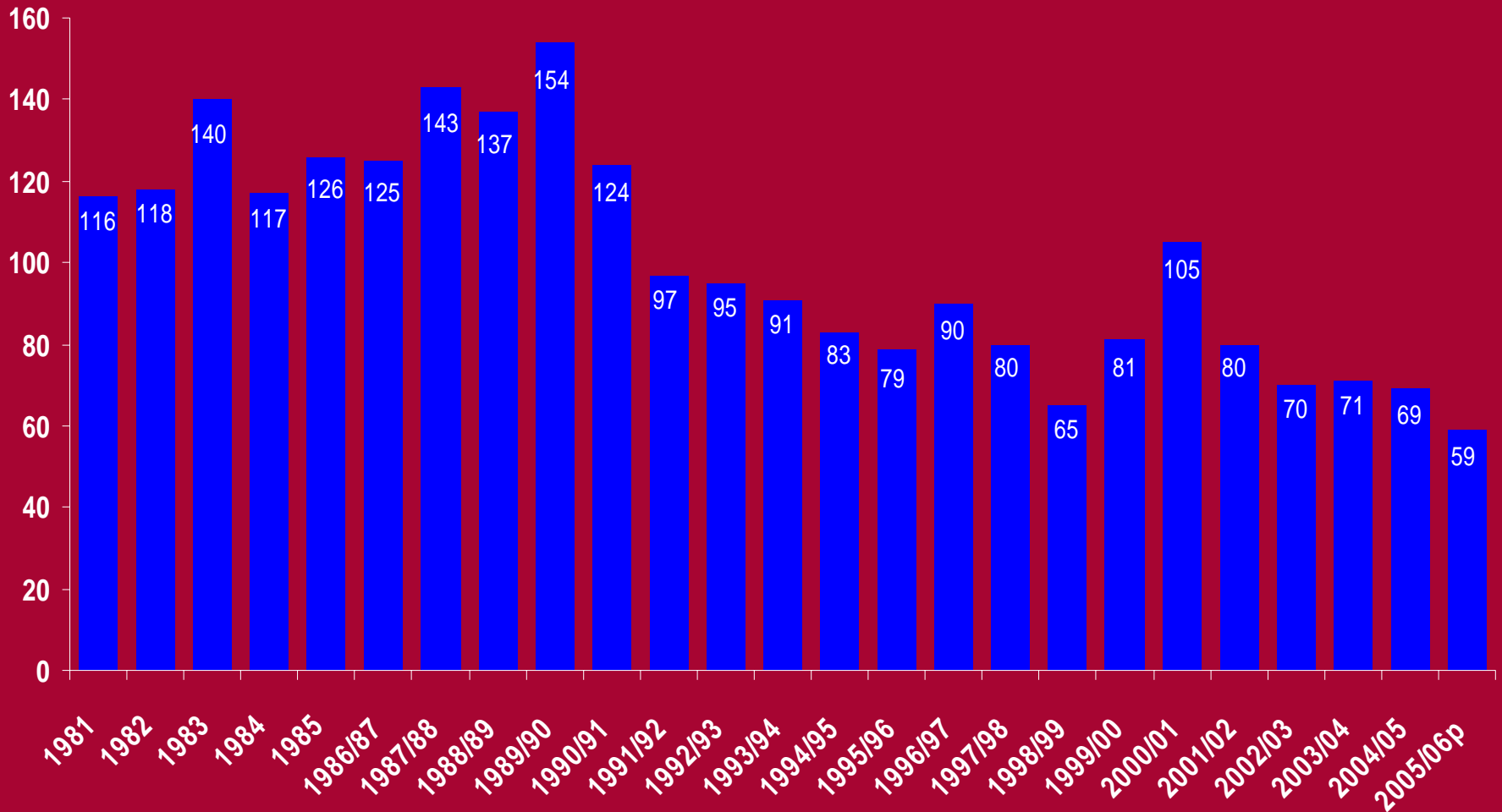
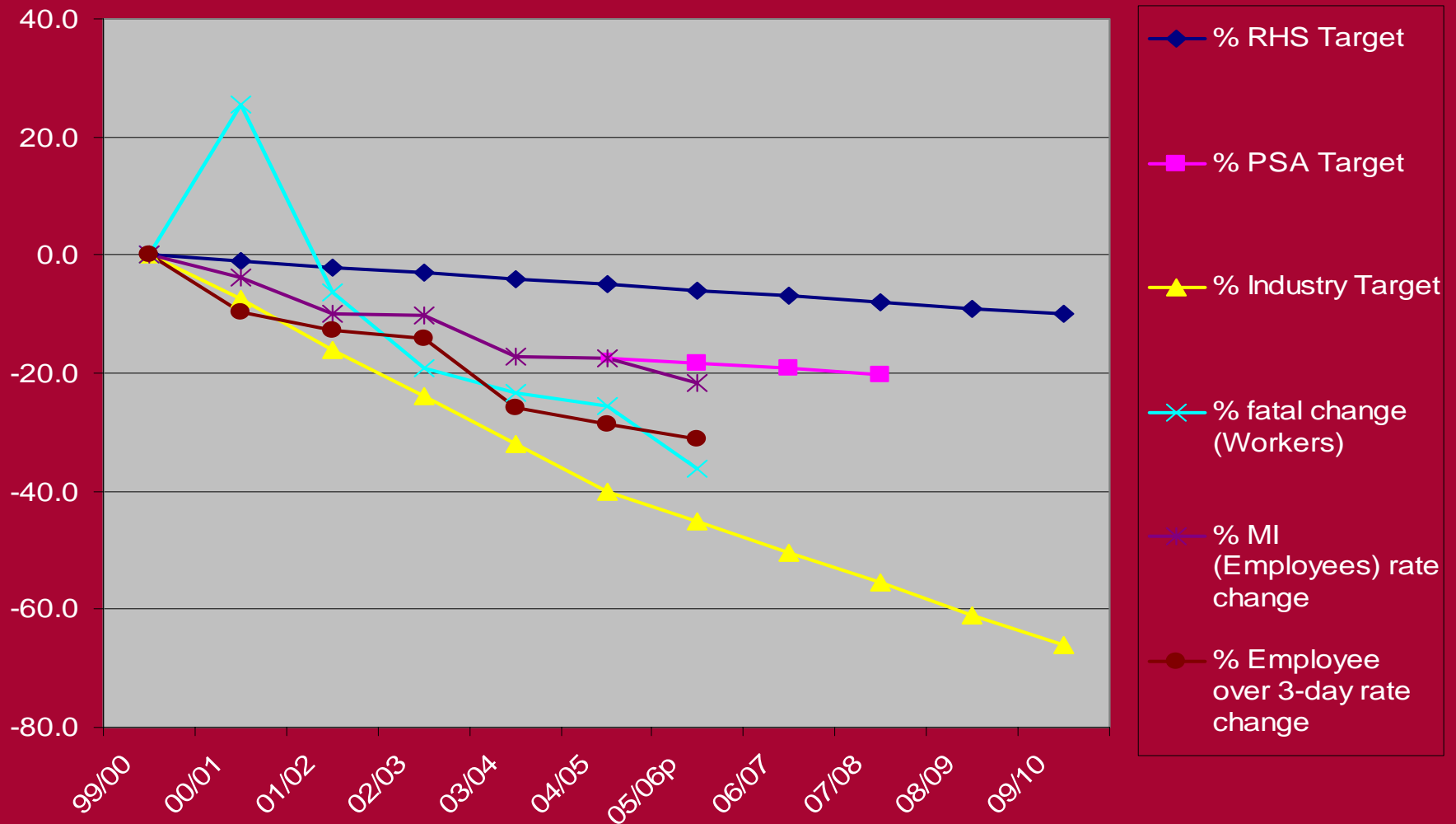


# Construction Fatalities (Workers; Jan 1981 to March 2006)



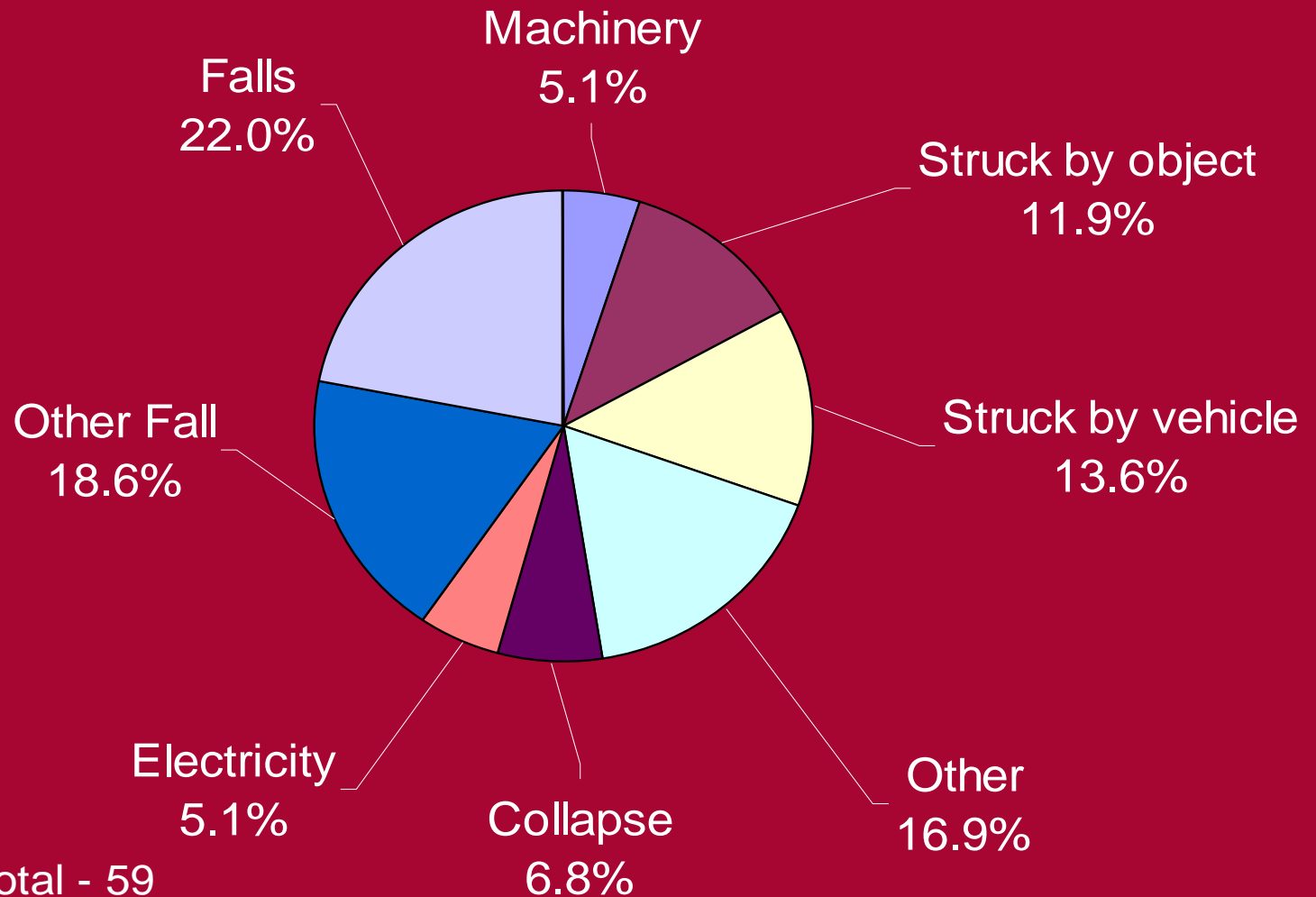
Injury figures for 1996/7 cannot be compared directly with previous year's figures because of the introduction of RIDDOR 95

# Progress to targets



# Construction Fatalities

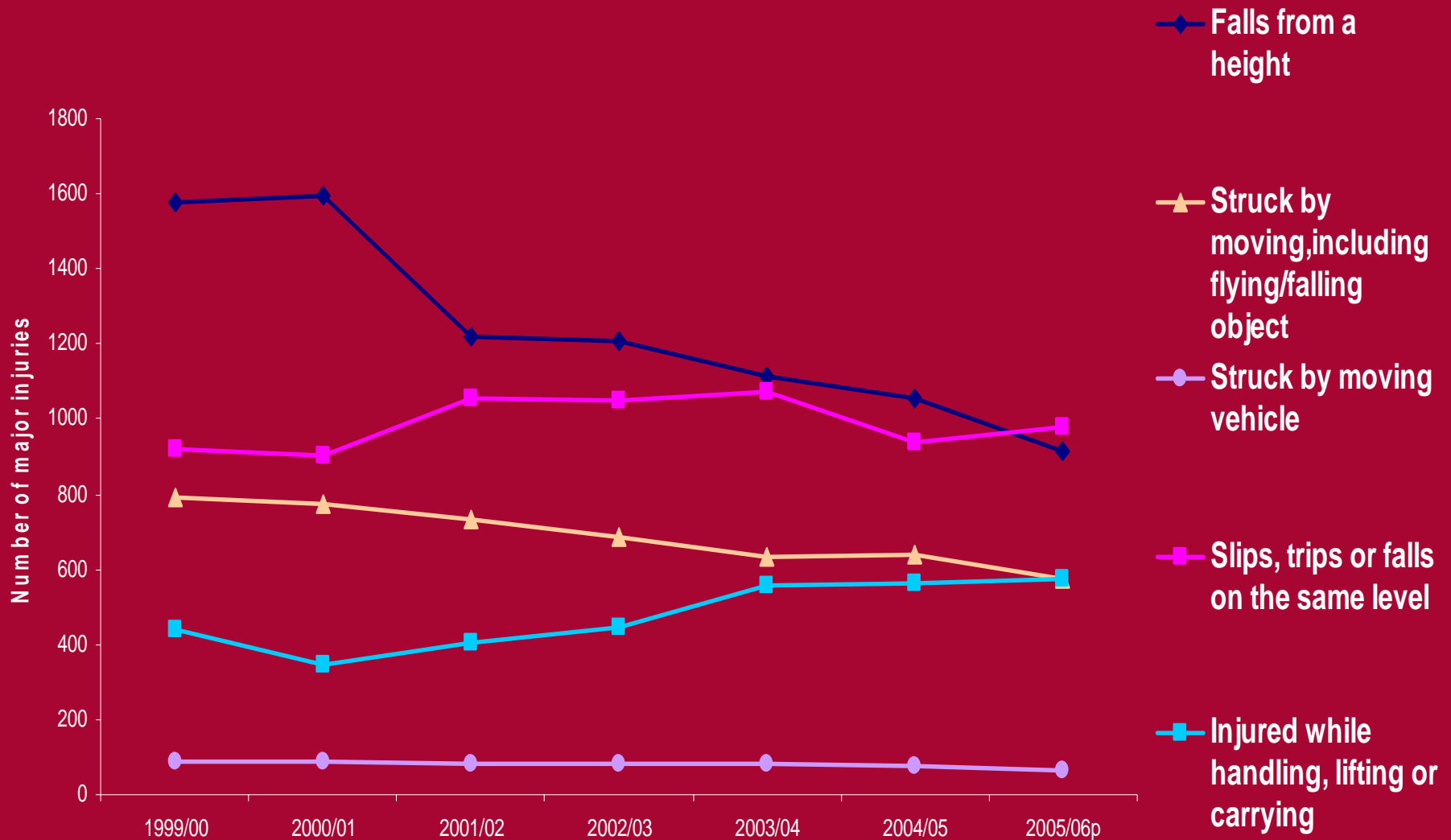
(Workers; 2005/06p)



Provisional total - 59

# Construction Major injuries

(Employees - by kind of accident; 1999/00 to 2005/06p)

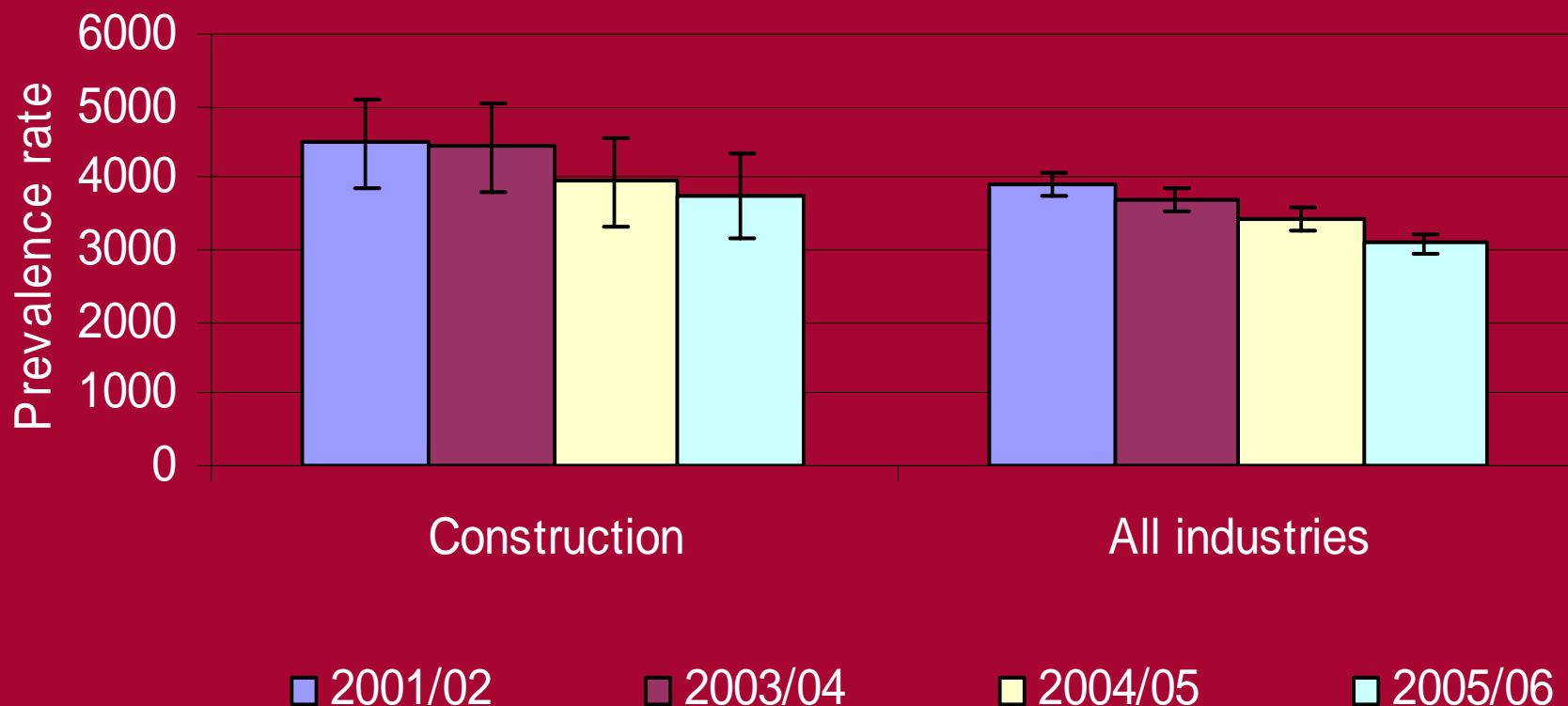


# Construction

## Self-reported illness



Estimated prevalence rates of self-reported illness caused or made worse by the current or most recent job, per 100 000 people working in the last 12 months



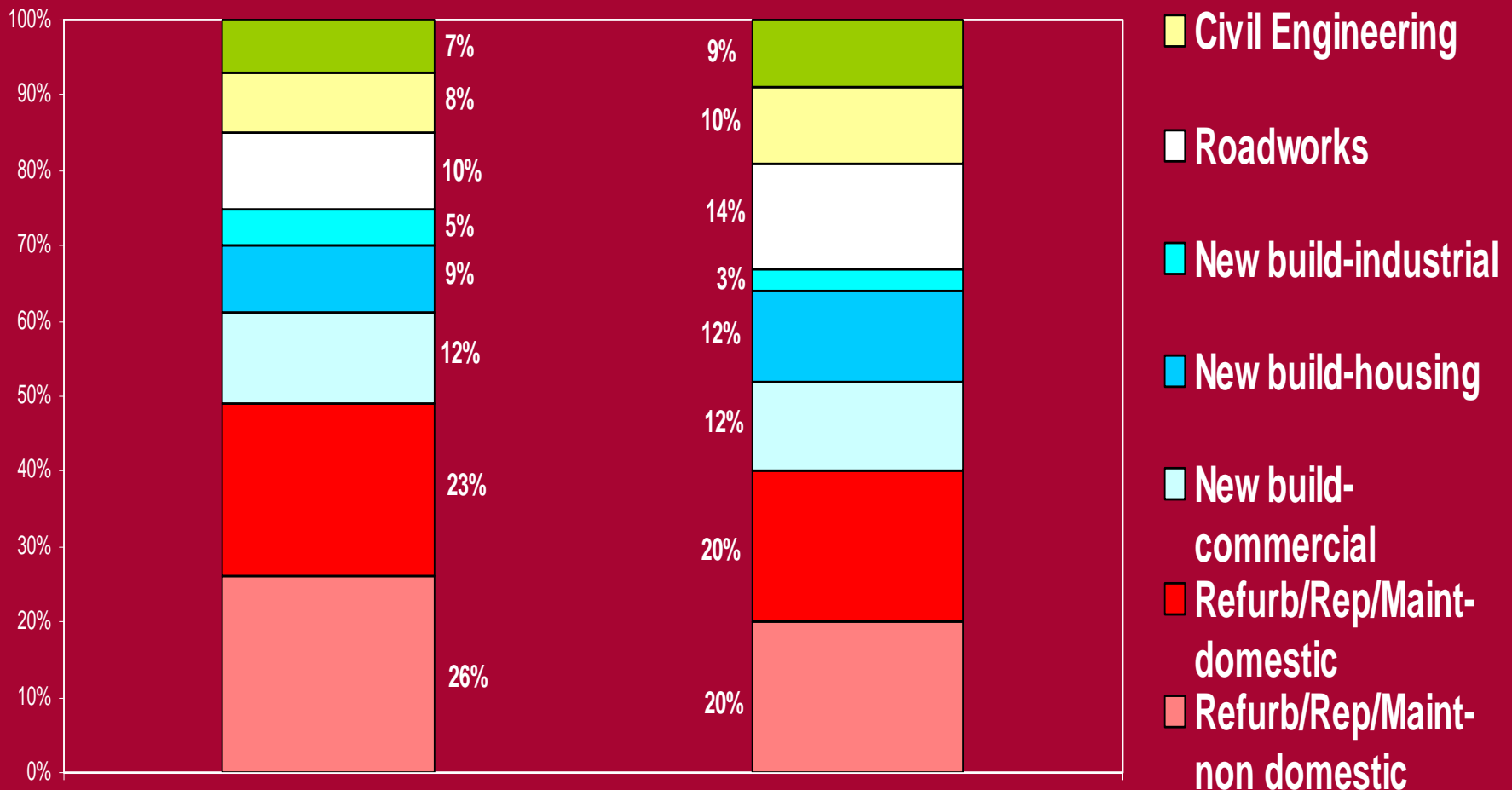
# Construction fatalities

## (Workers by project type)

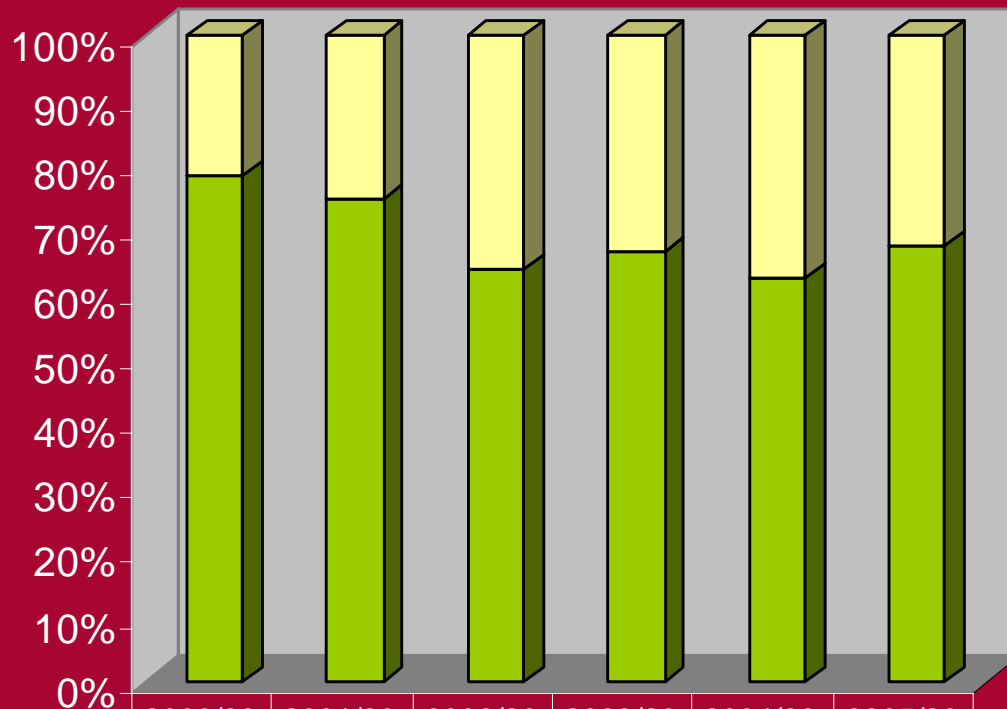


1999-to date (586)

2005/06p (59)



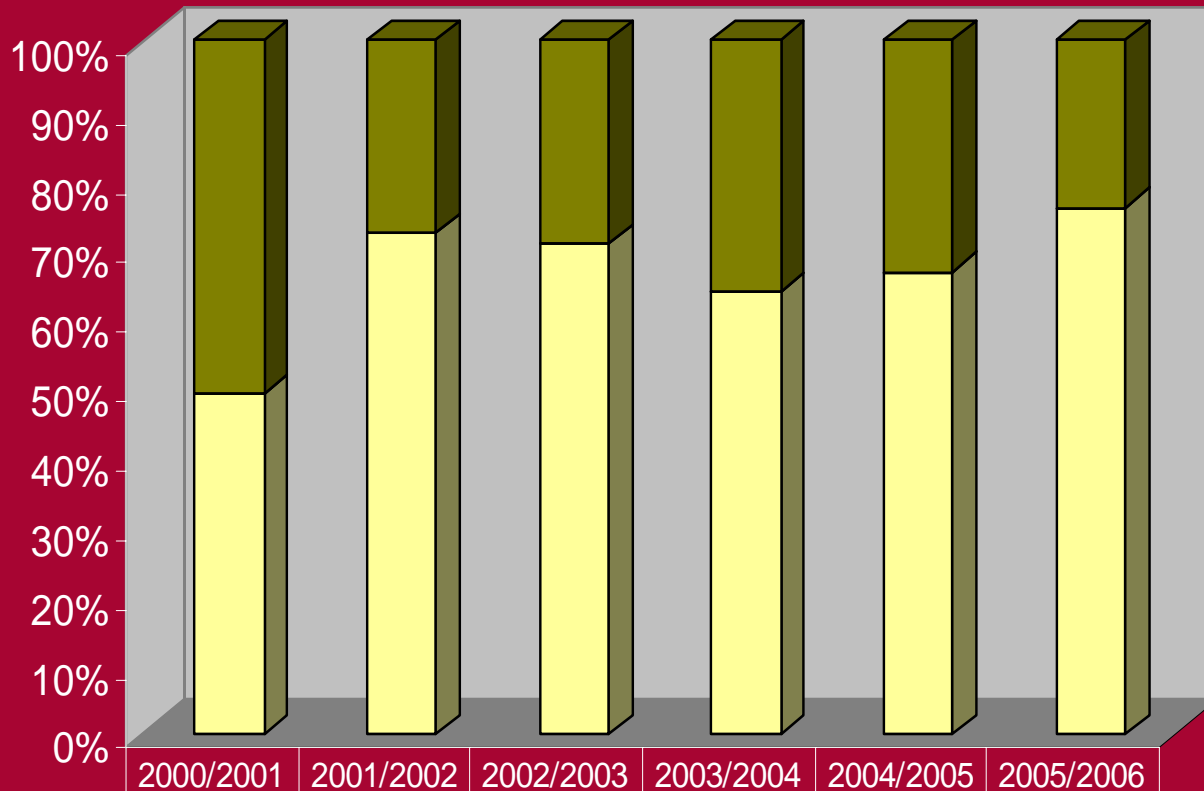
# Construction fatalities (Workers - by Employer Size)



- Large contractor (>15)
- S/E or Small contractor

	2000/2001	2001/2002	2002/2003	2003/2004	2004/2005	2005/2006
■ Large contractor (>15)	23	20	27	24	28	19
■ S/E or Small contractor	83	59	48	48	47	39

# Construction fatalities (Workers by Site Size)



- Large site (>15)
- Small site

	2000/2001	2001/2002	2002/2003	2003/2004	2004/2005	2005/2006
<span style="display: inline-block; width: 15px; height: 15px; background-color: #4F7942; border: 1px solid black; margin-right: 5px;"></span> Large site (>15)	54	22	22	24	24	13
<span style="display: inline-block; width: 15px; height: 15px; background-color: #90C040; border: 1px solid black; margin-right: 5px;"></span> Small site	46	78	78	76	76	87



# Omnibus Workers Survey

- ~ 6,000 construction workers interviewed
  - part of ongoing national survey run by British Market Research Bureau
- Gives current/recent data for range of health and safety issues
- First phase completed
- Hoping to repeat/update 2007/08

# Construction Booster Survey

---

- Health and safety practices (and changes) observed at site level
- Structure – cognitive, pilot and main survey
- Encouraging early data
- Aim – repeat survey 2008

# What we want from you



To help direct and evaluate the construction programme we need:

- data/statistics that you collect on trends/emerging issues
- Feedback:
  - insights into trends/emerging issues
  - how best to tackle them
  - ways of measuring progress
  - outcomes of projects or interventions