

Review of current issues in Amenity/Landscaping

Presented to AIAC 3 Feb 2010

by

Alan Plom

Head of Safety Section, HSE Agriculture & Food Sector

What is the 'Amenity'/Landscaping sector?



Scope and size of the 'amenity' industry



- Lantra estimate ~172k employed in ~17k businesses, but there are many more, as some are involved in other activities.
- Lantra analysis based on 'Amenity/Landscaping' including:
 - Hard, soft and interior landscaping
 - Sports turf maintenance
 - Private heritage and botanic gardens
 - Commercial grounds
 - Public parks and green spaces
- But also involves landscaping and grounds maintenance at:
 - Water (rivers, lakes, canals)
 - Roads, railways, airfields (civil and MOD)
 - Industrial sites (factories, fuel depots, electricity, gas plants/pipelines) , etc

.....ie, many different SIC codes.
- Enforced by HSE & LAs, depending on 'main activity' of site (not company).

Current 'H&S' concerns in amenity

- Competence of contractors
 - Reducing costs = increased contracting out (& under-cutting)
- Pesticides = Environmental/water quality & health issues,
 - Restrictions on use/products leading to move towards '*Management of Vegetation*' *BUT*
 - few incidents/complaints or ill health cases being reported.
- Health and Safety issues include:
 - Noise & Vibration (HAVS and WBV – HAVS cases increasing)
 - Working on slopes (mower overturns; highways maintenance)
 - Treework (Arboriculture – use of chainsaws etc; tree management)
- Conflicting pressure on employers and clients to improve performance
 - from clients, EU, civil claims/insurers and recent prosecutions
- Common factors and solutions:
 - Suitable and sufficient risk assessments
 - Training (for operators AND managers/clients!)

Pesticides: Risks to the Public & Environment



Health & Safety issues A level playing field???



Not always... Significant risks exist

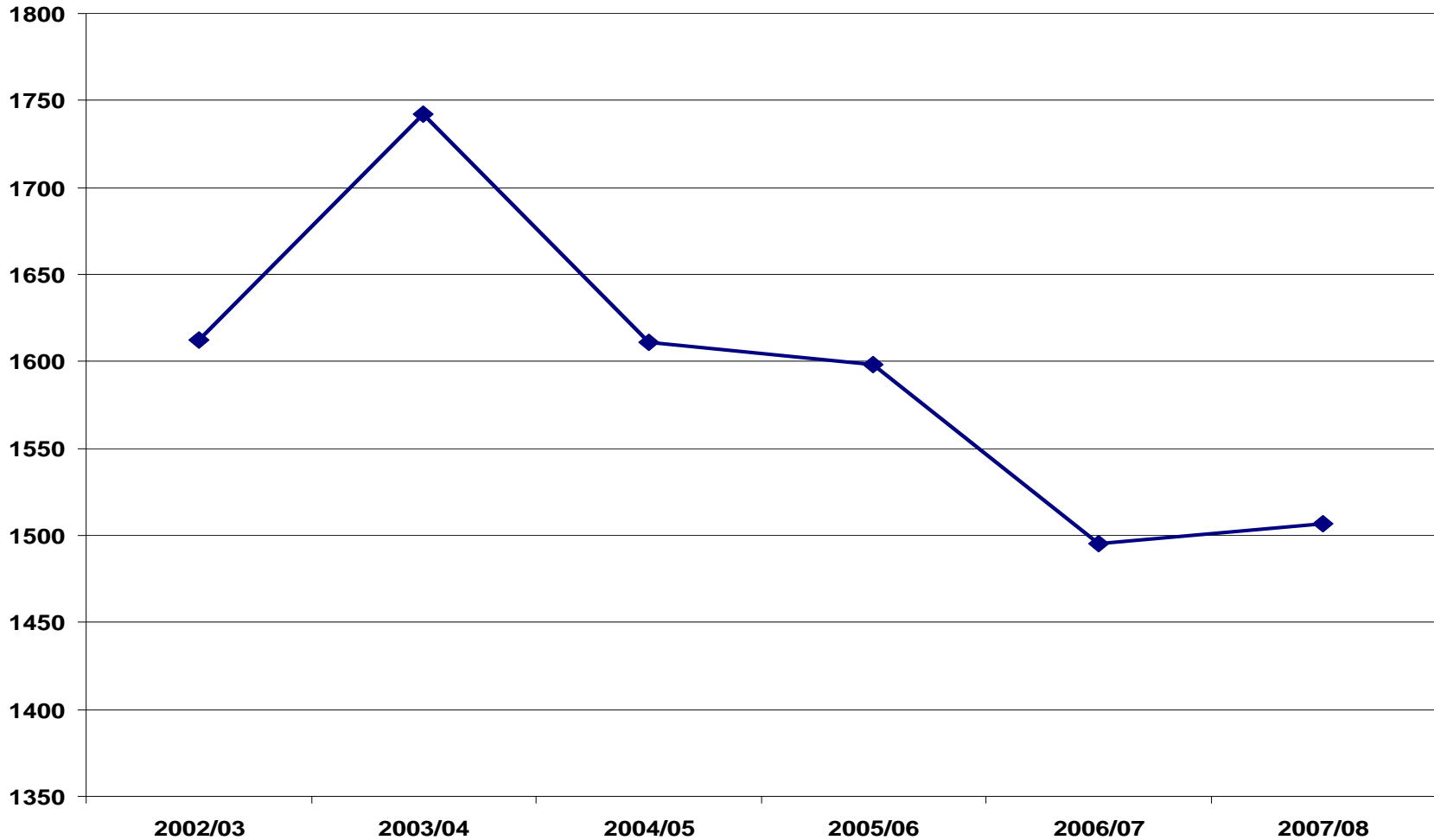


Fatal injuries to 'groundsmen' (2001-08)

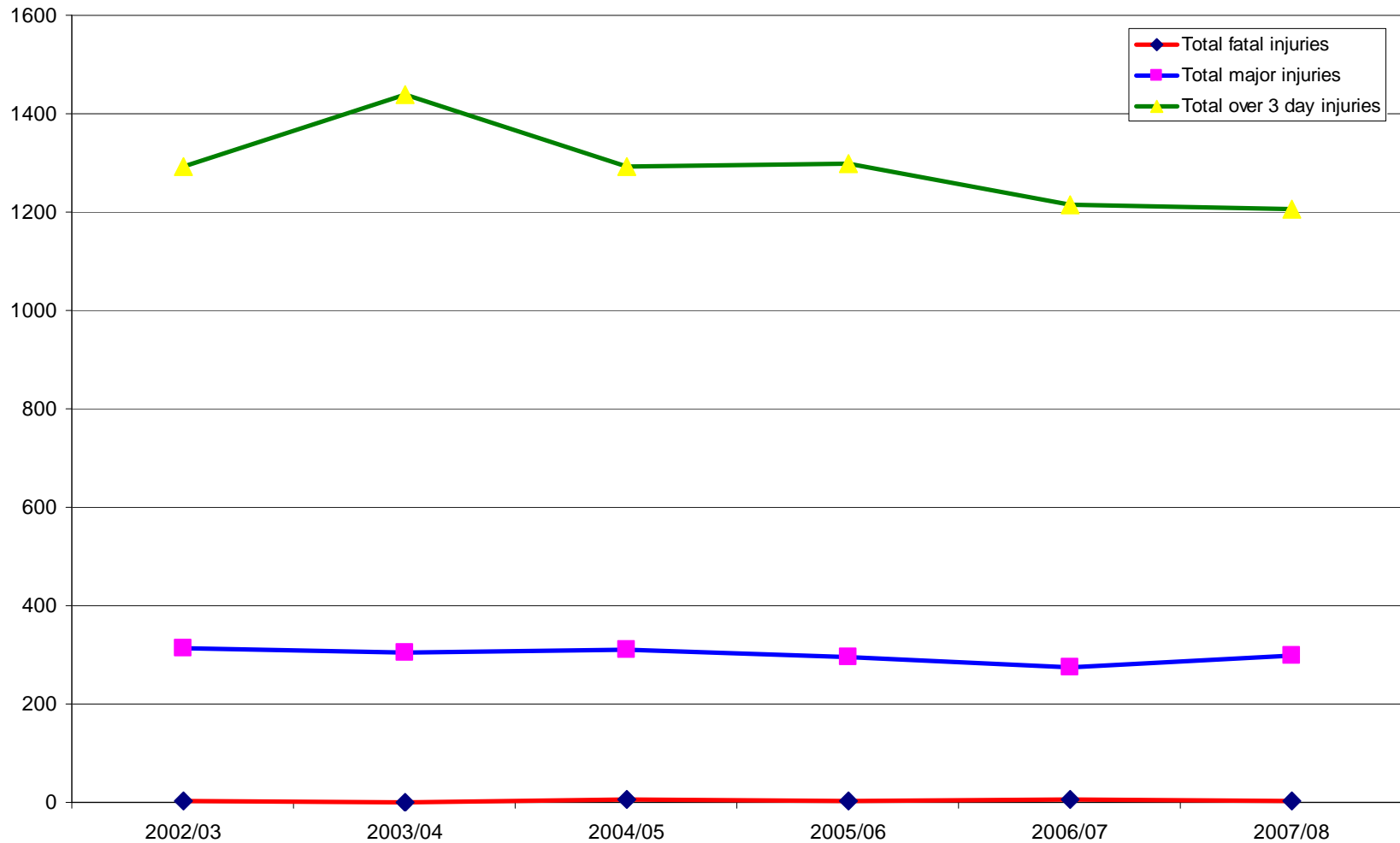


Fatal injuries	Hit by moving, falling object	1
	Hit by moving vehicle	4
	Hit something fixed or stationary	5
	High fall	3
	Collapse	5
	Drowned or asphyxiated	2
	Electricity	1
	Total fatal injuries 2001-2008	21

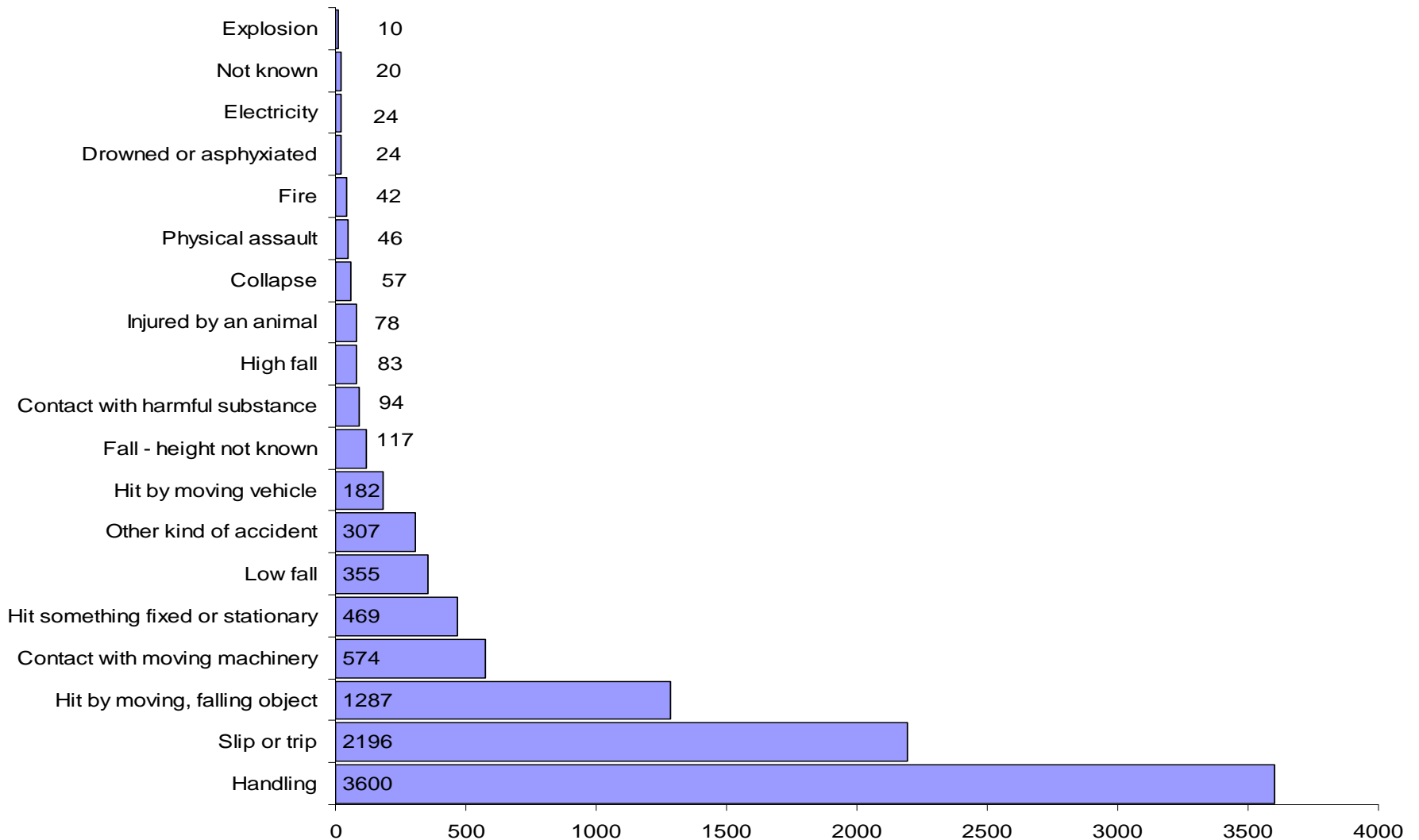
Total reported injuries 2001-08 (ICC coded 'groundsmen')



Injuries to 'groundsmen' by severity 2001-08



Type of injuries to 'groundsmen' (2001-08)



Injuries caused by grass cutters 2001-08



	Fatal	Major	3 day	Total
Contact with machinery		146	351	497
Struck by		44	149	193
Struck against		9	51	60
Moving vehicle		6	11	17
Vehicle overturns	3	13	20	36
MSDs		44	484	528
Slips/trips		11	23	34
FFH		15	20	35
Exposure to heat/fire/ substance		4	18	22
Unspecified			2	2
TOTAL	3	292	1129	1424

Prioritising ‘Amenity’ work

- ‘Grounds-keeping’ is seen as a low risk activity, ie “*just mowing the lawn*” – but a growing industry (Olympics, etc)
- 21 deaths 2001-08 but unable to determine incidence rates, *yet....*
 - ie actual injuries v workers (several SIC’s).
- ‘Only’ 3 fatal accidents during mowing 2001-07 but
 - 3? in 2009 *and* 36 overturns reported 2001-08
 - + many more unreported injuries and near misses.
- LAs also responsible for enforcement of many activities
- Few if any pesticide incidents/complaints reported to HSE
- Several (HSE) prosecutions (relating to mower incidents)

What next?

- **The industry** – clients and contractors – must appreciate the significance and do something about it to manage their operations more effectively
- **HSE** – Sector working with industry associations and leading companies to identify information needs and share good practice.
 - Safety & Health Awareness Days (SHADs)
 - HSE Project >2010-11 to look at procurement of contractors by LAs
 - Local inspection initiatives + Specialist advice eg HAV ‘Clubs’ (APSE)
- **‘Landscaping/amenity’ H&S Forum**
 - Workshop early 2010 – to share good practice/guidance
 - Website?

How would you rather do it? Who looks more 'professional'?



Information and Training



Category code*	Angle of slope																						
	10	11	12	13	14	15	16	17	18	19	20	21	22	23	24	25	26	27	28	29	30*	35*	40*
Type and model of ride-on machine																							
A	Dead tractor over 45hp																						
B	Dead compact tractor up to 45hp																						
C	Ranemose 2130 with/without ROPS																						
C	Ranemose 2220 with/without ROPS																						
C	Ranemose 3250 with/without ROPS																						
D	Ranemose 728 with/without ROPS																						
D	Ranemose 0820 with/without ROPS																						
D	Ranemose 6010 with/without ROPS																						
C	Ranemose T-Pipe 145 with/without ROPS																						
D	Juki S270 with/without ROPS																						
C	Hyster L3732																						
C	Hyster L3732 ROPS																						
C	Hyster L3734																						
C	Hyster L3734 ROPS																						
D	Hyster R314																						
D	Hyster R314 ROPS																						
C	Hyster 3424																						
C	Hyster 3424 ROPS																						
D	John Deere 1445 with ROPS																						
D	John Deere 1445 with ROPS																						
D	John Deere 495																						
F	John Deere 595																						
F	Fendt S1000																						
F	Fendt S1000																						
F	Fendt S1000																						
A	John Terrence T775																						
D	New Holland M228 with/without ROPS																						
H	Juki SGR22 with collector																						
H	Robota G18 with collector																						
H	Ezraa Hydro 24																						
H	Ezraa Boba																						
K	Ezraa AKS3																						
N	Ranemose Sander																						
Type and model of pedestrian machine																							
M	Solo Echo strimmer																						
A	Honda/Sharp/Scor/Husqvarna rotary mower																						
F	Alfa hover mower																						
F	Ranemose (Dennis) Mini cylinder mower																						
G	Fendt Hydroalk																						
C	Fendt Dual Drive																						
K	Fendt Dual Drive (with/in boots)																						
A	Bala YR100 hand mower																						



ANY QUESTIONS?