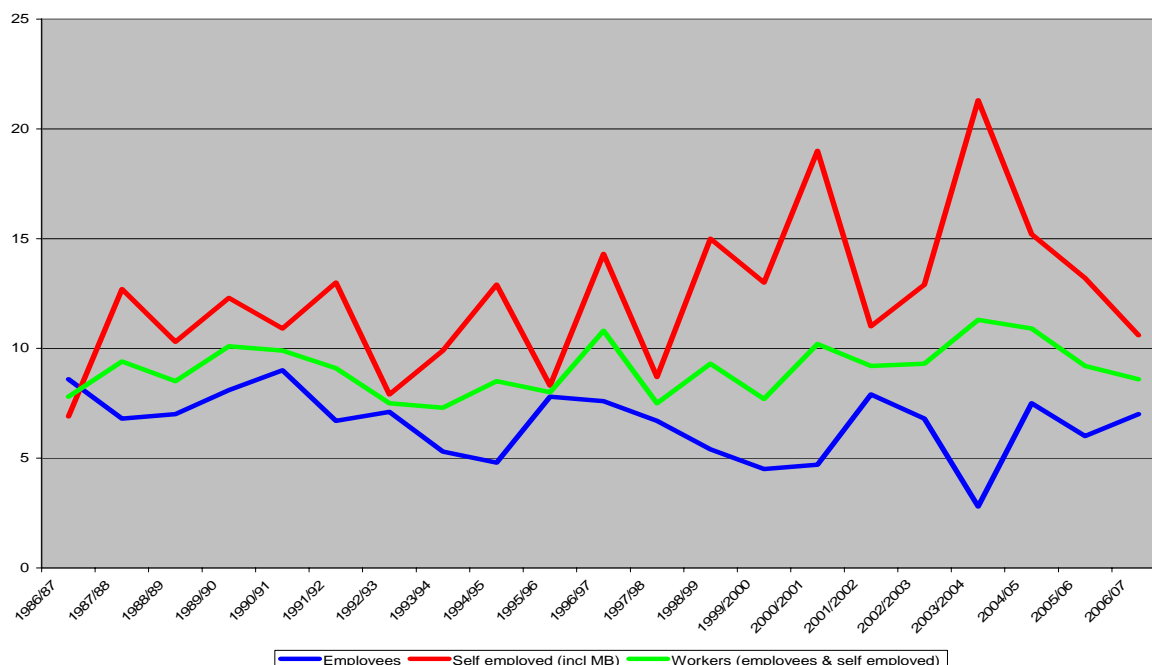


FATAL INJURIES
IN FARMING, FORESTRY, HORTICULTURE & ASSOCIATED INDUSTRIES

Table 1: Fatal accidents reported to HSE: 1 April 1997 – 31 March 2007

	1997/9 8	1989/9 9	1999/0 0	2000/0 1	2001/0 2	2002/0 3	2003/0 4 ¹	2004/0 5 ²	2005/0 6	2006/0 7 ³
Employed										
Self Employed	20	16	13	13	20	16	6	16	11	14
Non-employed	20	30	23	33	19	20	38	26	23	20
	11	9	8	7	2	3	7	3	8	9
Total Adults	46	52	40	49	39	37	49	47	37	39
Total Children (<16)	5	3	4	4	2	1	2	0	3	4
Total (SIC92, A & B)	51	55	44	53	41	39	51	45	42	43
Incidence rate per hundred thousand workers	7.5	9.3	7.7	10.2	9.2	9.6	11.3	10.4	8.7	8.1

Figure 1: Fatal injuries incidence rates (per 100,000) by employment status 1986/87 to 2006/07p (including 23 deaths at Morecambe Bay in February 2004)



¹ The numbers for 2003/04 includes 23 deaths of Cockle Pickers at Morecambe Bay in February 2004.

² The peak in 2004/05 (see figure 2) can be explained by the adverse weather during the harvest resulting in increased pressure and risk taking.

³ 2006/07 data is provisional.

Figure 2: Fatal injuries incidence rates (per 100,000) by employment status 1986/87 to 2006/07p (excluding Morecambe Bay)

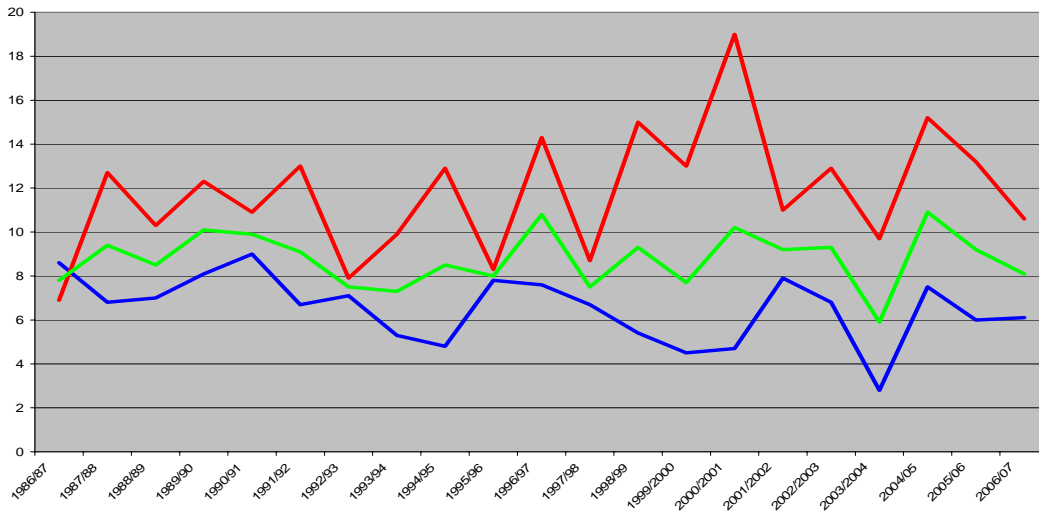


Figure 3: Fatal injuries to employees and self-employed over the ten year period 1997/98 to 2006/07 (including Morecambe Bay)

