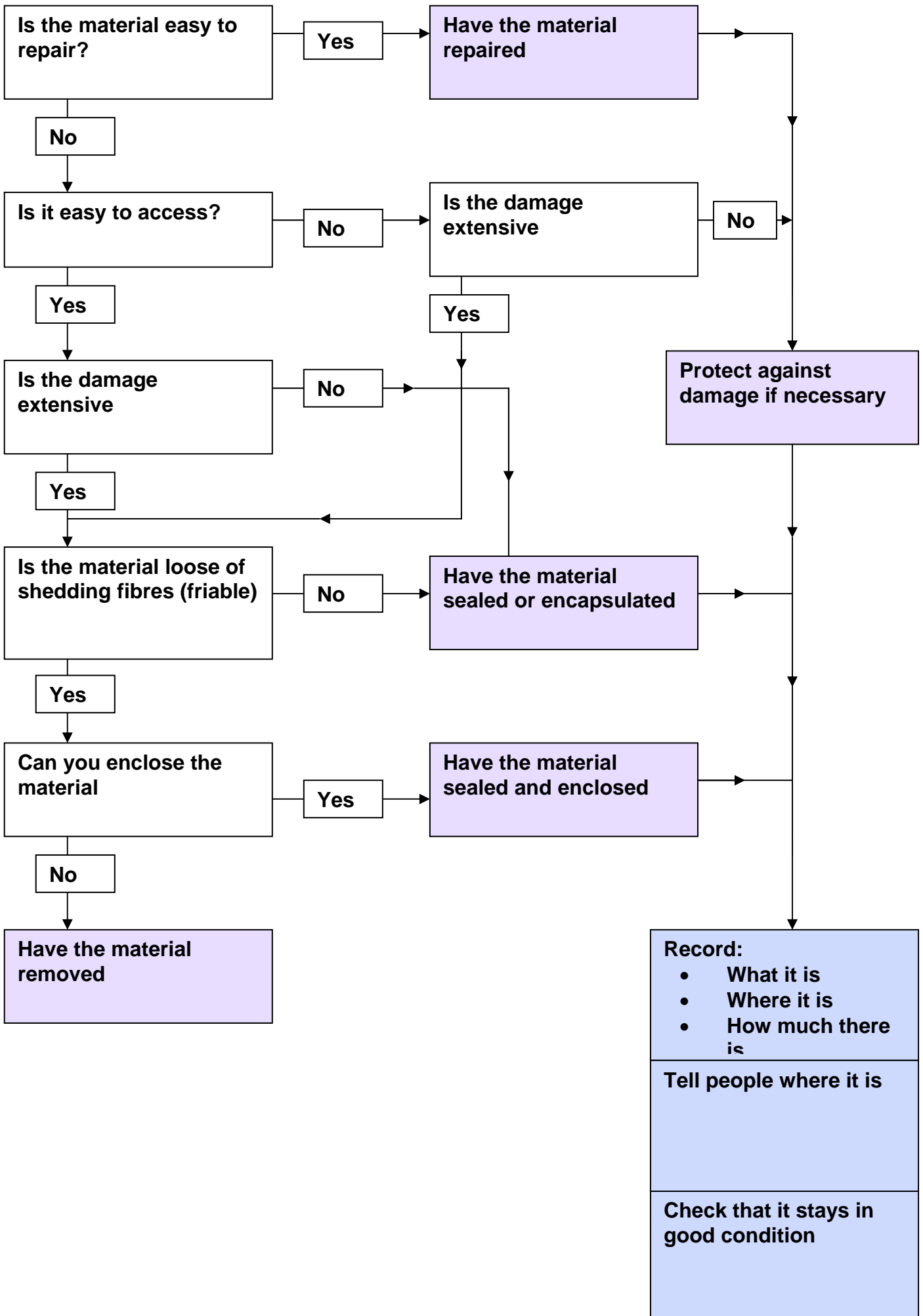


Dealing with sprayed asbestos - 'limpet', etc



Notes

Easy to repair

- slight damage
- repair limited to patching up small areas

For example, treat the surrounding area with encapsulating fluid.
Reinforce, if necessary, with an open-mesh scrim of glass fibre mat or calico.

Access

- easy to get at
- vulnerable to damage eg by impact, by vandals, by birds - nesting material, by working nearby,

Damage - slight or extensive

Where damage is slight such as deteriorated surface finish, remedial work may be unnecessary.

Review this decision if circumstances change.

Where the damage is more extensive but material is generally sound, it may be right to seal or encapsulate.

For extensive damage such as loose material, enclosure or removal is the right choice.
Where pieces have fallen off, with debris on the floor, removal is the solution.

Enclosure

This means a physical barrier to prevent the asbestos being disturbed, eg an airtight panel in front of the material with sealed edges, corners.

Enclosure is a poor option if you need access to the material, or if water damage is likely.