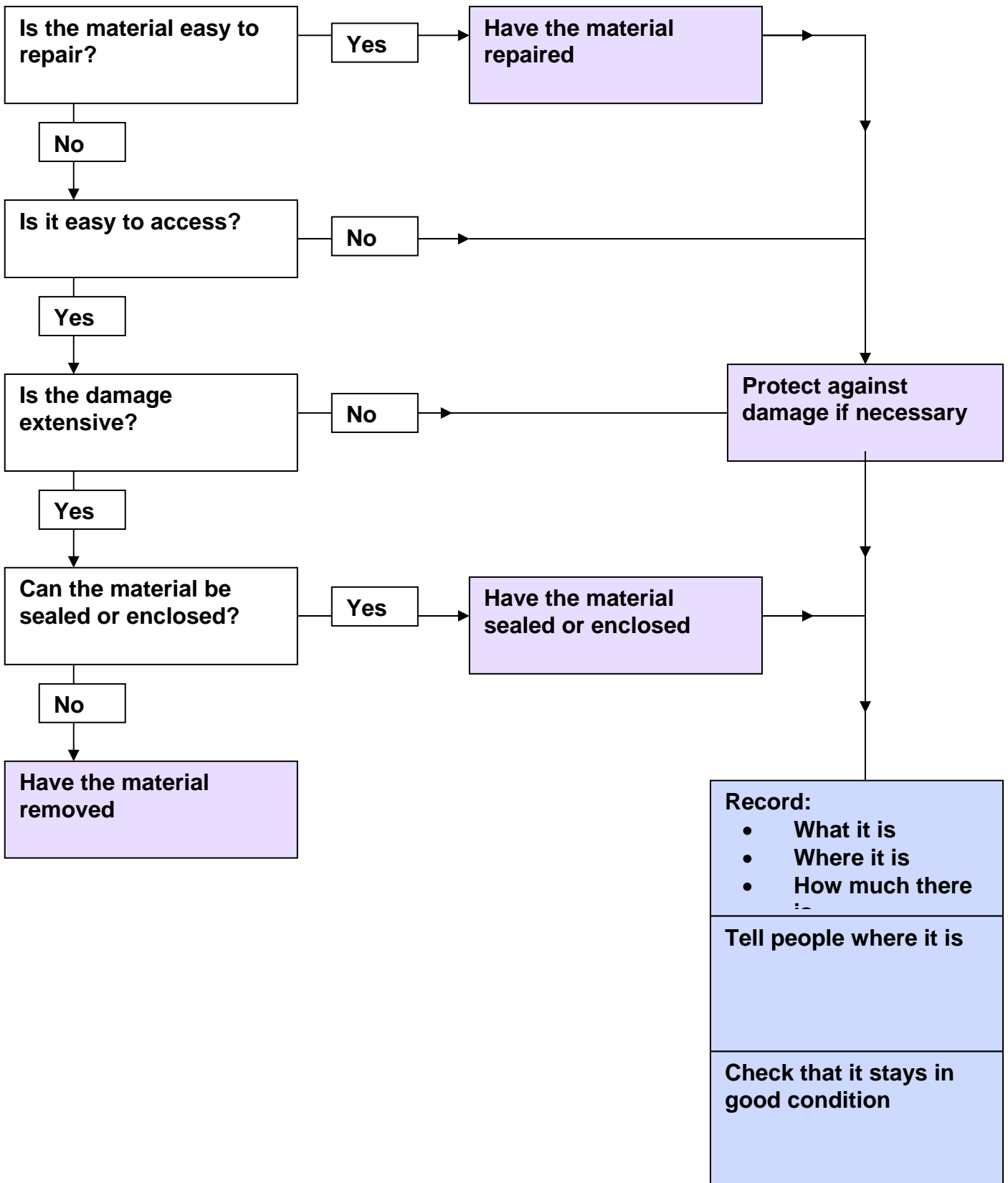


## Dealing with other asbestos-containing materials, eg fabric, paper, gasket



## Notes

Textiles, paper and gaskets can release fibres easily.

### Easy to repair

- repair limited to patching up small areas

For example, paint over with sealant paint.

### Access

- easy to get at
- vulnerable to damage eg by impact, by vandals, by working nearby

### Damage - slight or extensive

Where damage is slight that does not impair its performance, remedial work may be unnecessary.

Review this decision if circumstances change.

Where the damage is more extensive but the material is generally sound, it may be right to enclose. Sealing eg with paint may be appropriate for some materials.

For extensive damage or component failure, removal is the solution.

### Enclosure

This means a physical barrier to prevent the asbestos being disturbed, eg an airtight panel in front of the material with sealed edges and corners.

Enclosure is a poor option if you need access to the material, or if water damage is likely.