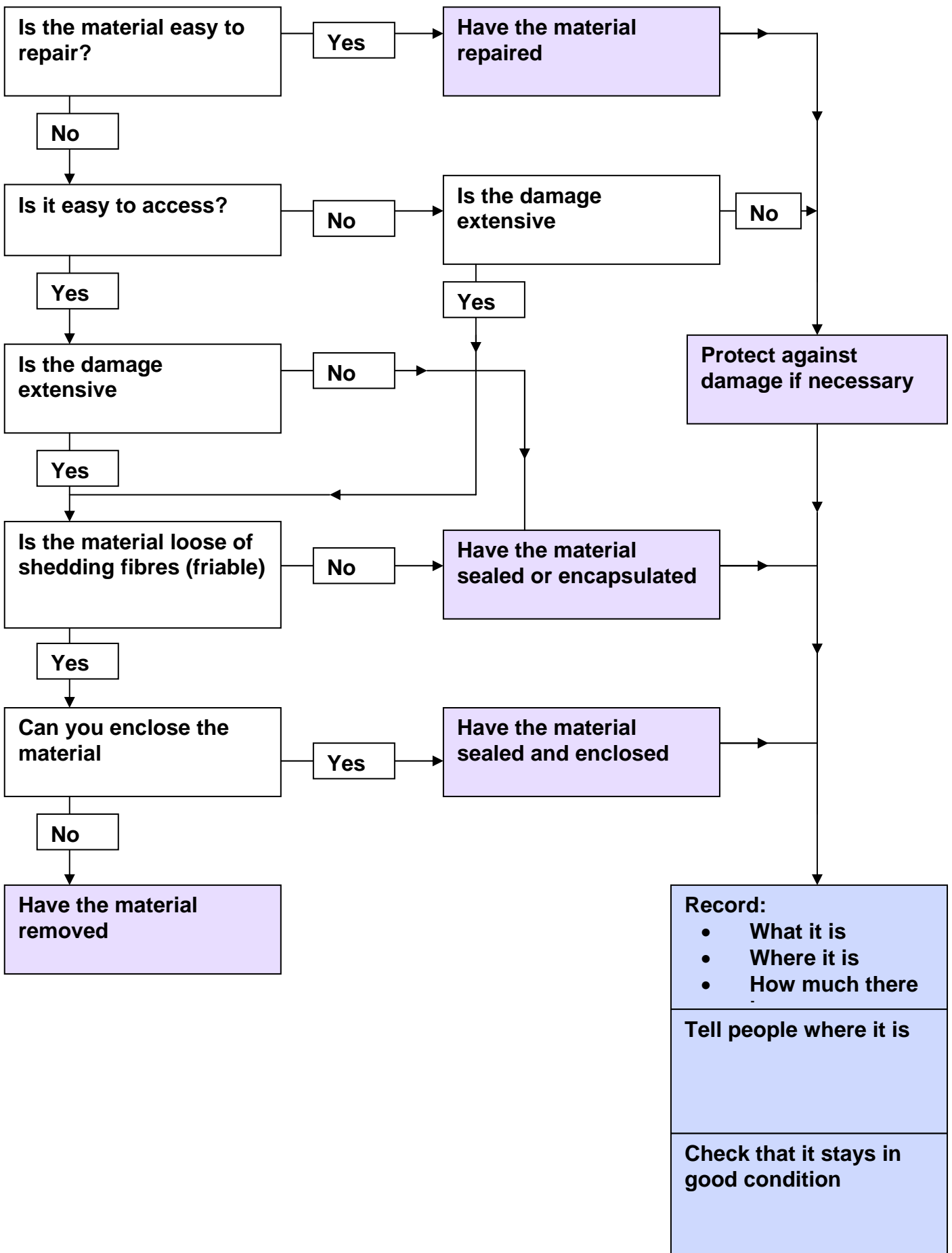


Dealing with asbestos lagging on pipes, boilers etc



Notes

Easy to repair

- slight damage
- repair limited to patching up small areas

For example, fill small areas of damaged lagging with non-asbestos plaster. Reinforce, if necessary, with calico cloth.

Access

- easy to get at
- vulnerable to damage eg by impact, by vandals, by working nearby

Damage - slight or extensive

Where damage is slight such as small cracks in the insulation coating, remedial work may be unnecessary.

Review this decision if circumstances change.

Where the damage is more extensive but material is generally sound, it may be right to seal or encapsulate.

For extensive damage such as insulation coming away, enclosure or removal is the right choice.

Where pieces have fallen off, with debris on the floor, removal is the solution.

Enclosure

This means a physical barrier to prevent the asbestos being disturbed, eg an airtight panel in front of the material with sealed edges and corners.

Enclosure is a poor option if you need access to the material, or if water damage is likely.