

Health and safety in the South West

Work-related ill health and injury statistics (2010/11p)

Contents

Summary	2
Ill Health	3
Injuries	4
Working days lost	6
Prosecutions	7
Technical Note	8

Summary

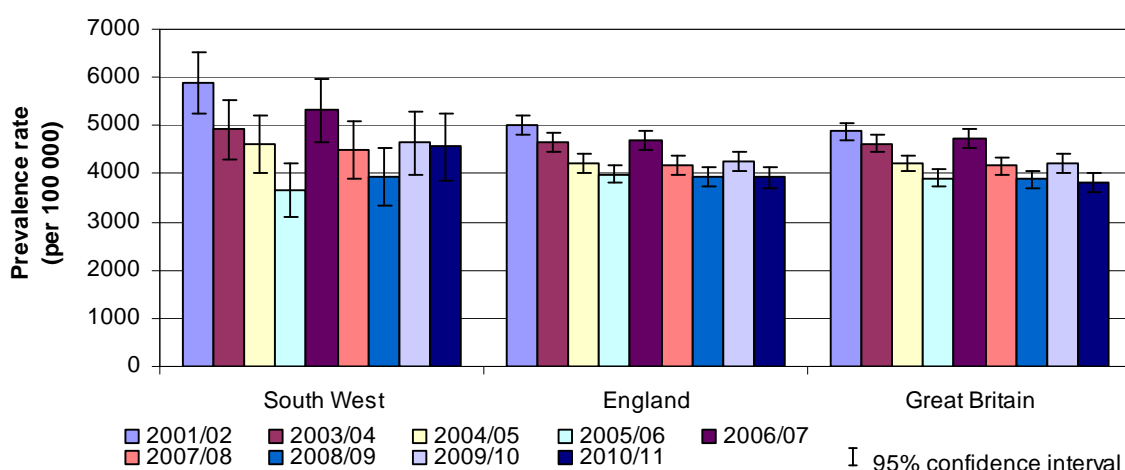
The information in this document relates to Health and Safety statistics in the South West in 2010/11p. The document can be found at: www.hse.gov.uk/statistics/regions/southwest/

- The latest information for the South West shows a downward trend in workplace injuries but no clear trend in rates of work-related ill health.
 - **Ill Health:** 121 000 people suffered from work-related illness, a rate of 4 600 per 100 000 people working in the past 12 months (LFS).
 - **Injuries:** There were 9 492 reported injuries to employees, a 5.4% decrease from the previous year (RIDDOR).
 - **Injury rates:** Total rate of reported injury fell to 430.4 per 100 000 employees, compared with a five year average of 477.3 (RIDDOR).
 - **Working days lost:** 1.9 million working days were lost due to workplace injury and ill health, 1.0 days per worker (LFS).
 - **Enforcement:** HSE inspectors issued 1 065 notices and prosecuted 49 cases, 45 of which led to a conviction.

III Health

- The latest information for the South West shows:
 - In 2010/11, an estimated **121 000 people in the South West**, who worked in the last year, believed they were suffering from a work-related illness, according to the Labour Force Survey (LFS).
 - This equates to a **prevalence rate** of 4 600 per 100 000 people (4.6%) working in the last 12 months.
 - The prevalence rate fell by an estimated 22% between 2001/02 and 2010/11, a statistically significant decrease. The range of possibilities (95% confidence interval) for this fall was 6.5% to 38%.

Estimated prevalence rates of self-reported illness caused or made worse by work, per 100 000 people working in the last 12 months



- For more health statistics for the South West, please use the following links:
 - **Estimated cases and rates of self-reported illness caused or made worse by work, by country and region, for people working in the last 12 months:**
www.hse.gov.uk/statistics/lfs/wrigor1w12.xls
 - **Estimated new cases and rates of self-reported illness caused or made worse by work, by country and region, for people working in the last 12 months:**
www.hse.gov.uk/statistics/lfs/wrigor2w12.xls
 - **Estimated cases and rates of self-reported musculoskeletal disorders caused or made worse by work, by country and region, for people working in the last 12 months:**
www.hse.gov.uk/statistics/lfs/msdgor1w12.xls
 - **Estimated cases and rates of self-reported stress, depression or anxiety caused or made worse by work, by country and region, for people working in the last 12 months:**
www.hse.gov.uk/statistics/lfs/strgor1w12.xls
 - **Mesothelioma death rates per million by region, time period and sex:**
www.hse.gov.uk/statistics/tables/meso05.xls
 - **Map showing mesothelioma Standardised Mortality Ratios (SMRs) 1981 – 2005:**
www.hse.gov.uk/statistics/regions/mesosouthwest.pdf

Injuries

- The latest information for the South West shows:
 - **Fatal injuries:** there were 8 fatal injuries to workers in 2010/11.
 - **Major injuries:** there were 2 120 major injuries to employees in 2010/11p.
 - **Over 3 day injuries:** there were 7 368 over 3 day injuries to employees in 2010/11p.
 - **Injury rates:** the rate of injury for fatal and major injuries was 96.3 per 100 000 employees, compared with a national average of 100.4. The rate of injury for over 3 day injuries was 334.1 per 100 000 employees, compared with a national average of 366.4.
 - **Annual trend:** compared with the previous year, injuries in the South West have fallen by 5.4%.

Figure 1: Fatal injuries to workers in the South West (2006/07 – 2010/11)

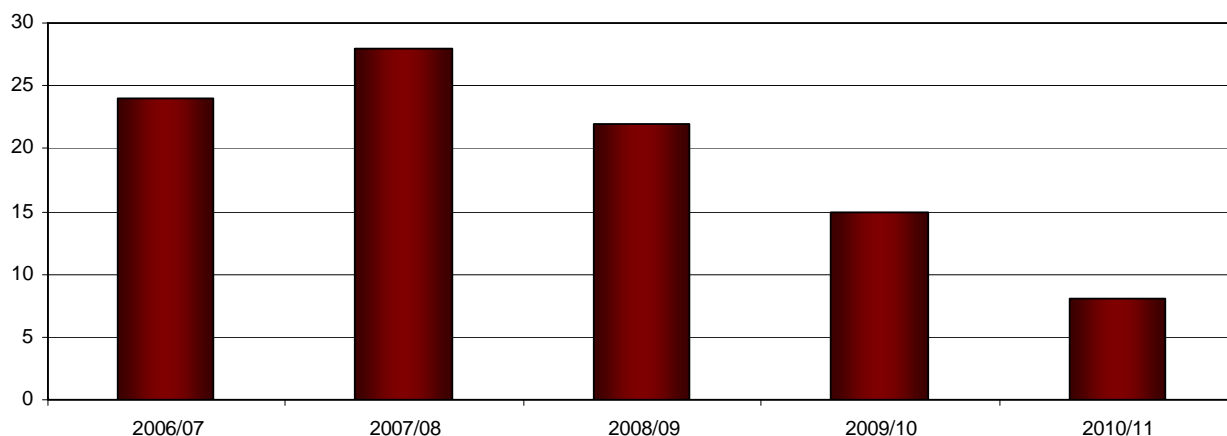


Figure 2: Major injuries (and fatal & major rate of injury) to employees in the South West (2006/07 – 2010/11p)

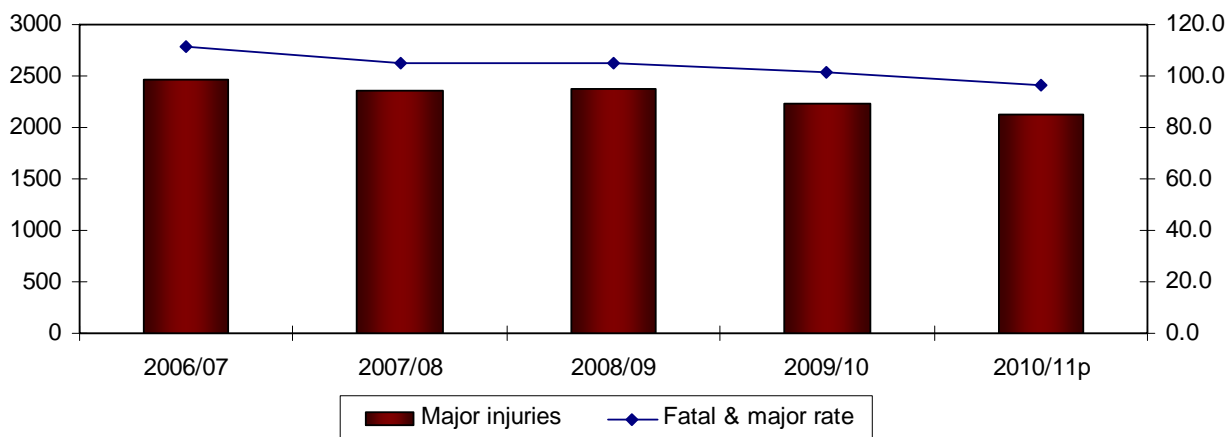
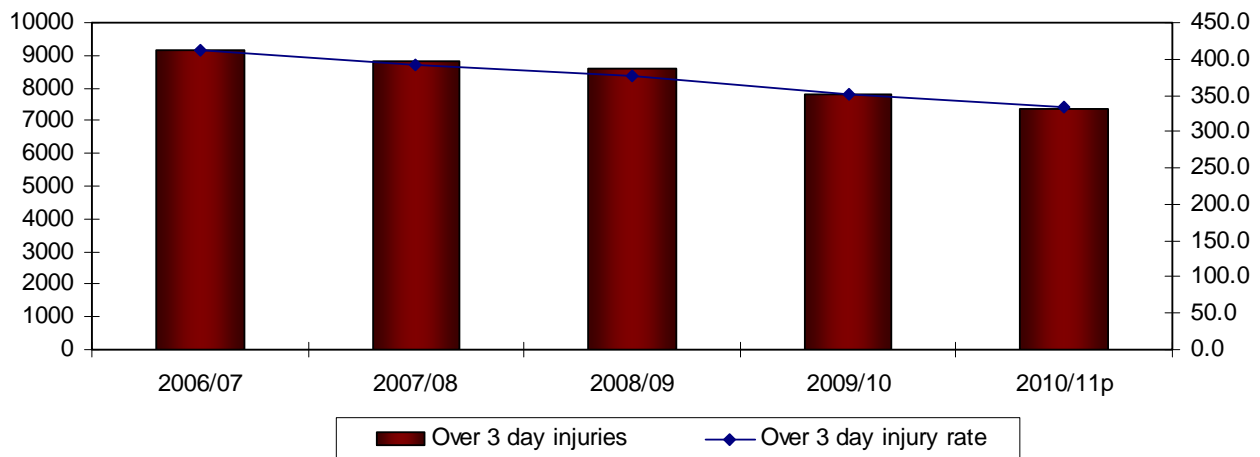


Figure 3: Over 3 day injuries (and over 3 day rate of injury) to employees in the South West (2006/07 – 2010/11p)



- For more injury statistics for the South West, please use the following links:
 - **Number of injuries at a regional, county and local authority level:**
www.hse.gov.uk/statistics/regions/reginj.xls
 - **Injury rates per 100 000 employees at a regional, county and local authority level:**
www.hse.gov.uk/statistics/regions/regrate.xls
 - **Regional Injury Rate maps 2010/11:**
www.hse.gov.uk/statistics/regions/mapinj.pdf
 - **Cases and rates of reportable non-fatal injury to workers, by country and region:**
www.hse.gov.uk/statistics/lfs/injgor1_3yr.xls

Working days lost

- The latest information for the South West shows:
 - In 2010/11, an estimated 1.9 million days were lost (full-day equivalent) to workplace injury and work-related ill health.
 - This equates to an average annual loss of an estimated 1.0 days per worker.

- For more detailed information relating to working days lost at a regional level, please refer to:
www.hse.gov.uk/statistics/lfs/wdlgor.xls

Prosecutions

- The latest information for the South West shows:
 - HSE prosecuted **49 cases**, with at least one conviction achieved in 45 cases (92%).
 - HSE prosecuted **85 offences**, 68 of which led to a conviction.
 - Duty holders found guilty of health and safety offences received **finances totalling £1 015 310**, an **average fine of £14 931 per offence**.
 - Local authorities prosecuted **12 cases**, all of which resulted in at least one conviction.
 - Local authorities prosecuted **34 offences**, 26 of which led to a conviction.
 - Duty holders found guilty of health and safety offences received **finances totalling £118 300**, an **average fine of £4 550 per offence**.

- For more detailed information relating to enforcement action taken by HSE and local authorities at a regional level, please refer to:

www.hse.gov.uk/statistics/regions/regenf.xls

N.B. In Scotland HSE and local authorities investigate potential offences but cannot institute legal proceedings. HSE and local authorities send a report to the Crown Office and Procurator Fiscal Service (COPFS). COPFS makes the final decision whether to institute legal proceedings and which offences are taken. For more information, please see www.hse.gov.uk/statistics/sources.htm#enforcement

Technical Note

- The injury statistics summarised in this regional report are based on RIDDOR reports and exclude injuries reported to HSE's Railways Inspectorate (and from April 2006 the Office of Rail Regulation [ORR]), and records where the Local Authority location is unknown.
- p provisional

Technical note on injury rates for counties and local authorities

- RIDDOR injury data for counties and local authorities (LA) are presented as rates per 100 000 employees. These rates allow comparisons to be made between different areas. However, the following points should be taken into account:
 - Research shows that differences between injury rates at regional / local level are strongly influenced by variations in the mix of industries and occupations; for example, some LAs contain large employers in riskier industries.
 - The local area rates will also be affected by different levels of reporting of RIDDOR (this effect is reduced by looking at employees only, i.e. excluding the self employed).
 - The data only relate to injuries reported under RIDDOR, since other sources - e.g. the Labour Force Survey - do not generally permit examination at this level of detail.
- A detailed table gives rates separately for fatal and major, over-3-day and total injuries, and showing each of the five years 2006/07 to 2010/11p.
- These are summarised in a map, for each Government Office Region, Wales and Scotland, which shows the total employee injury rate (2006/07-2010/11p) for each LA district. The figures are colour-coded to show where they lie in the overall distribution of injury rates among the 380 LA districts in Great Britain.

© *Crown copyright* If you wish to reuse this information visit www.hse.gov.uk/copyright.htm for details.
First published 11/11.