

## Supporting images to report about the HSE investigation into the collapse of a tower crane in Canada Square, London on 21 May 2000

<b>Figures</b>	
Figure 1	Typical luffing jib tower cranes on DS1/DS2 after incident
Figure 2	Top of TV20.4 mast section showing catch hooks
Figure 3	Schematic explanation of external climbing frame equipment
Figure 4	Guide Wheel arrangement
Figure 5	Demonstration of climb at Castleford – prior to separation of head
Figure 6	Demonstration of climb at Castleford – top part of piston rod stroke
Figure 7	Demonstration of climb at Castleford – moving new mast section into climbing frame
Figure 8	Arrangement of lift cylinder and yoke
Figure 9	General area of wreckage showing boundary DS1/DS2 sites
Figure 10	Plan of area around DS2 showing wreckage
Figure 11	View of Wreckage
Figure 12	Close up view of wreckage
Figure 13	Sketch of two halves of climbing frame
Figure 14	Slewing motor recovered from wreckage
Figure 15	Top two mast sections of TC3 after recovery showing the pattern of damage
Figure 16	Drawing of top mast section illustrating the reason for the pattern of damage
Figure 17	Guide Wheel being offered to gouge marks on SE leg
Figure 18	Catch hooks on second mast section
Figure 19	West side of Yoke showing damage
Figure 20	Distorted piston rod
Figure 21	North east wheel housing being positioned on base plate

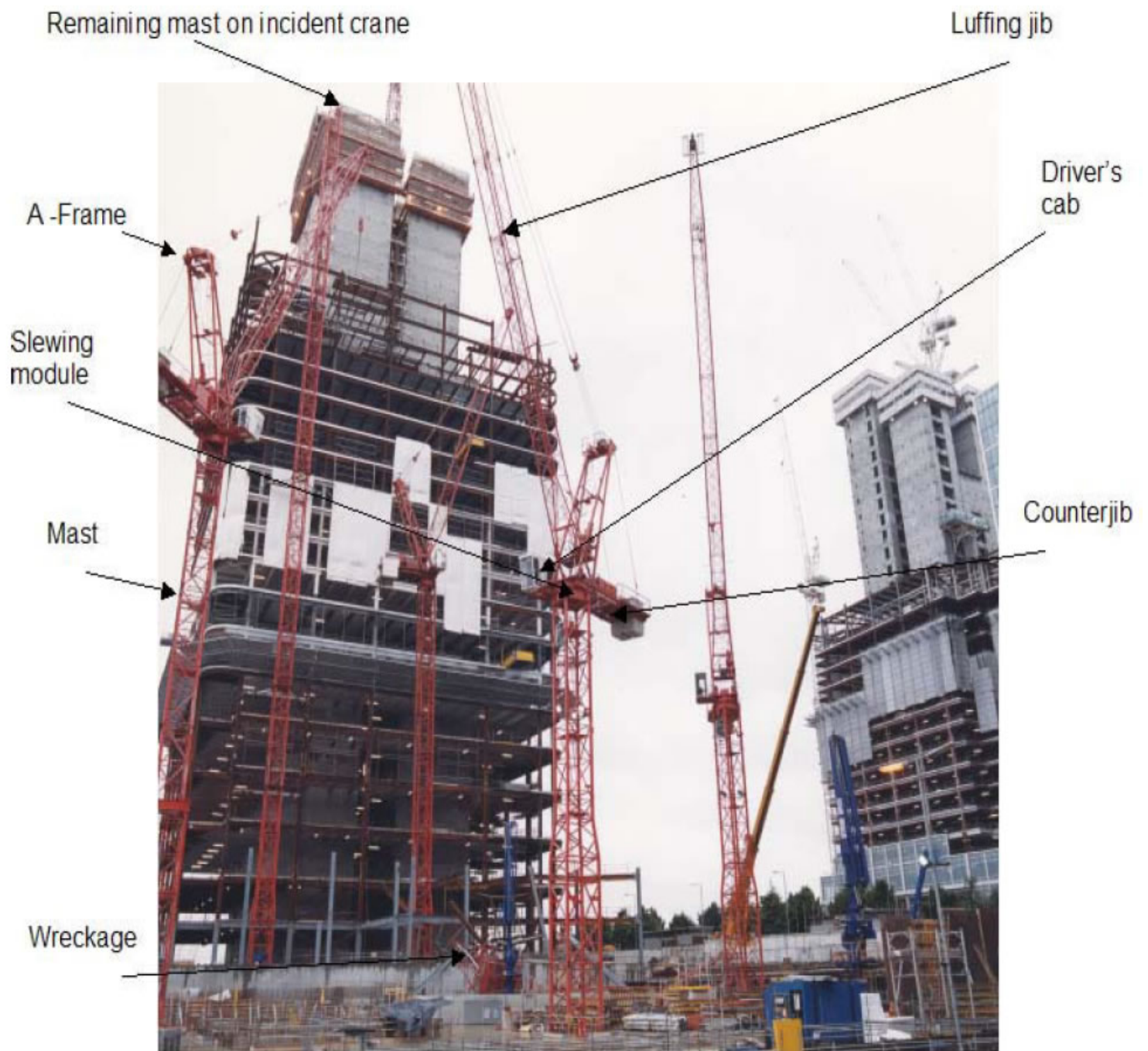


Figure 1 Typical luffing jib tower cranes on DS1/2 sites after the incident



Figure 2 Top of a TV20.4 mast section showing catch hooks

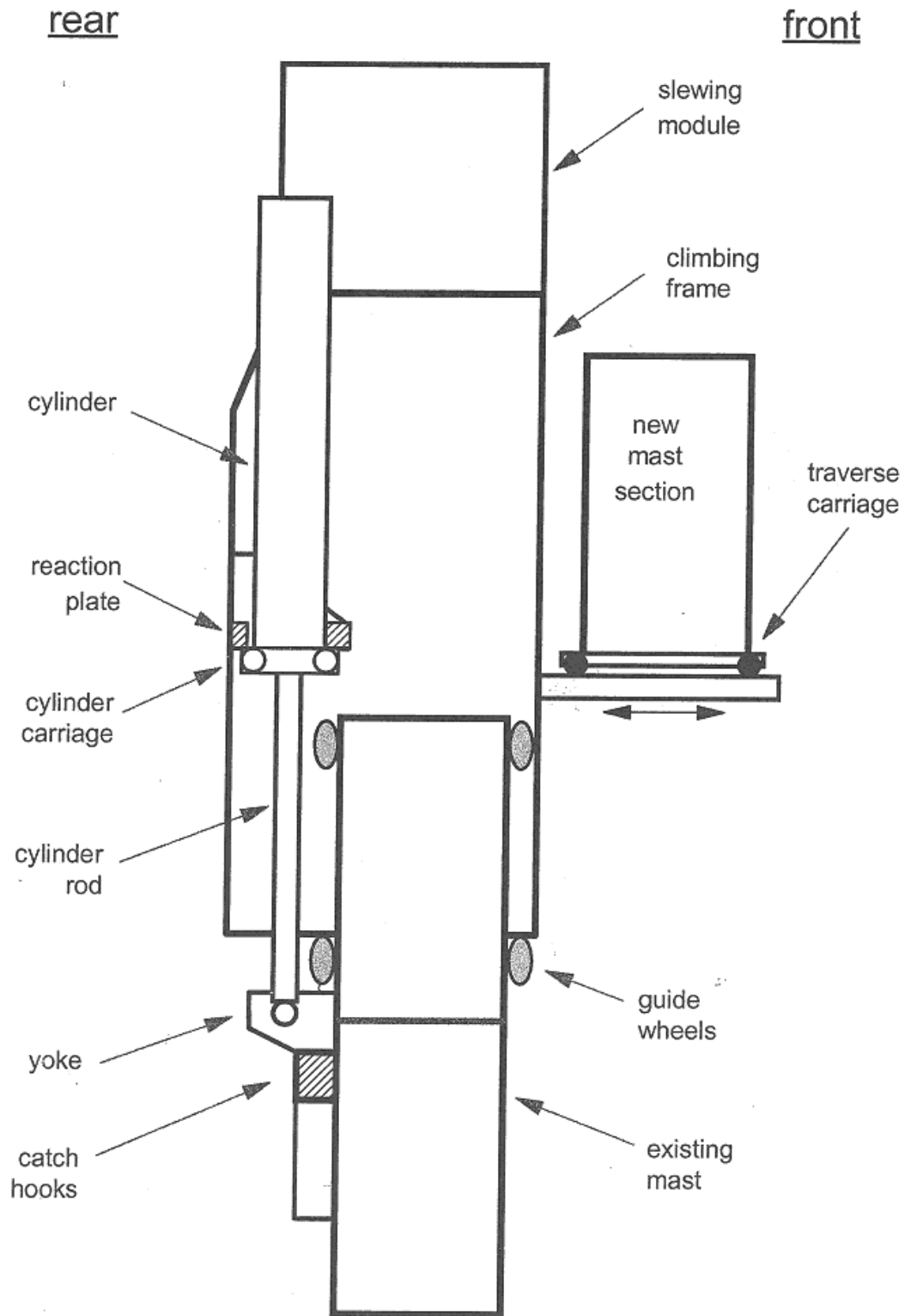
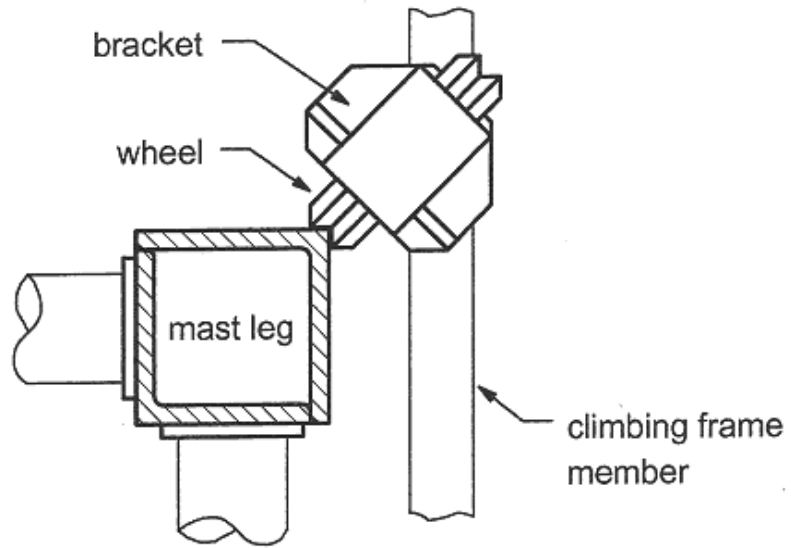


Figure 3 Schematic explanation of external climbing equipment parts



**north-east guide wheel**

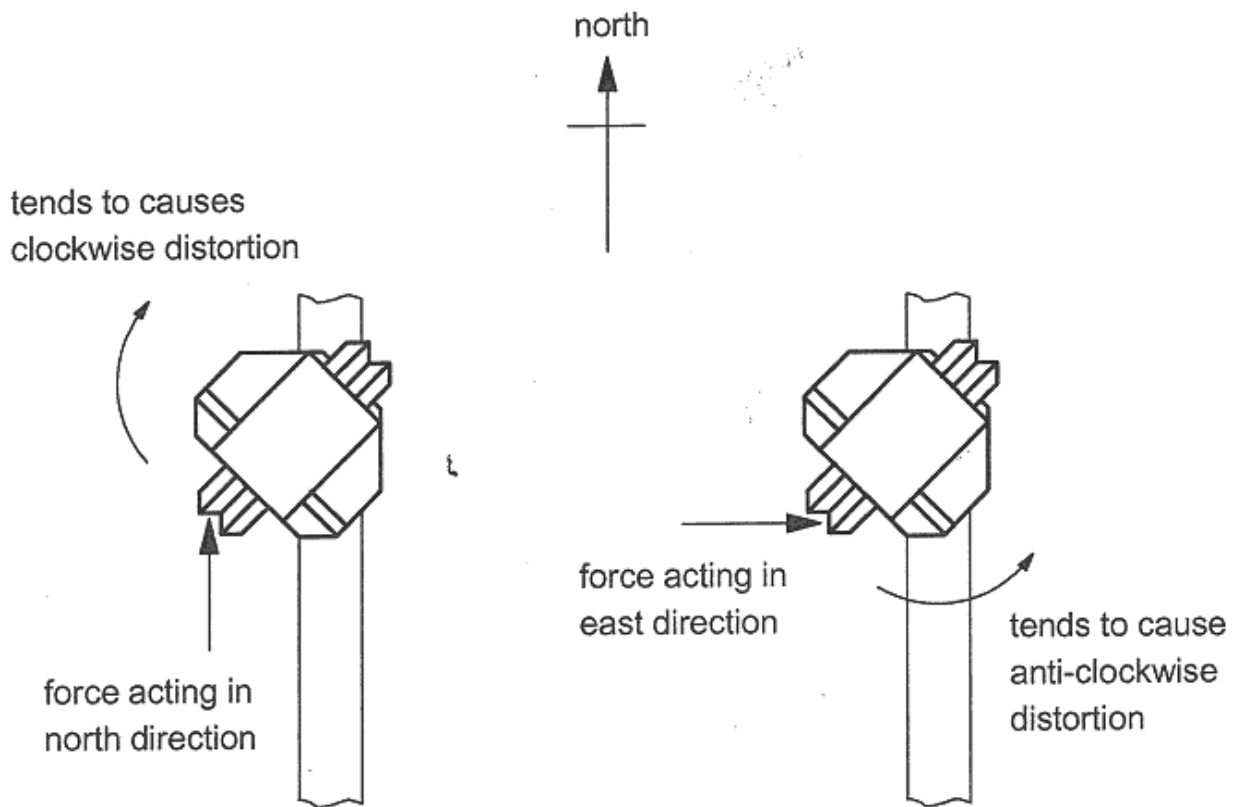


Figure 4 Arrangement of Guide Wheels on mast leg corner



Figure 5 – Demonstration of climb at Castleford – prior to separation of mast head



Figure 6 Demonstration of a climb with a luffing jib tower crane – top part of the hydraulic piston rod stroke

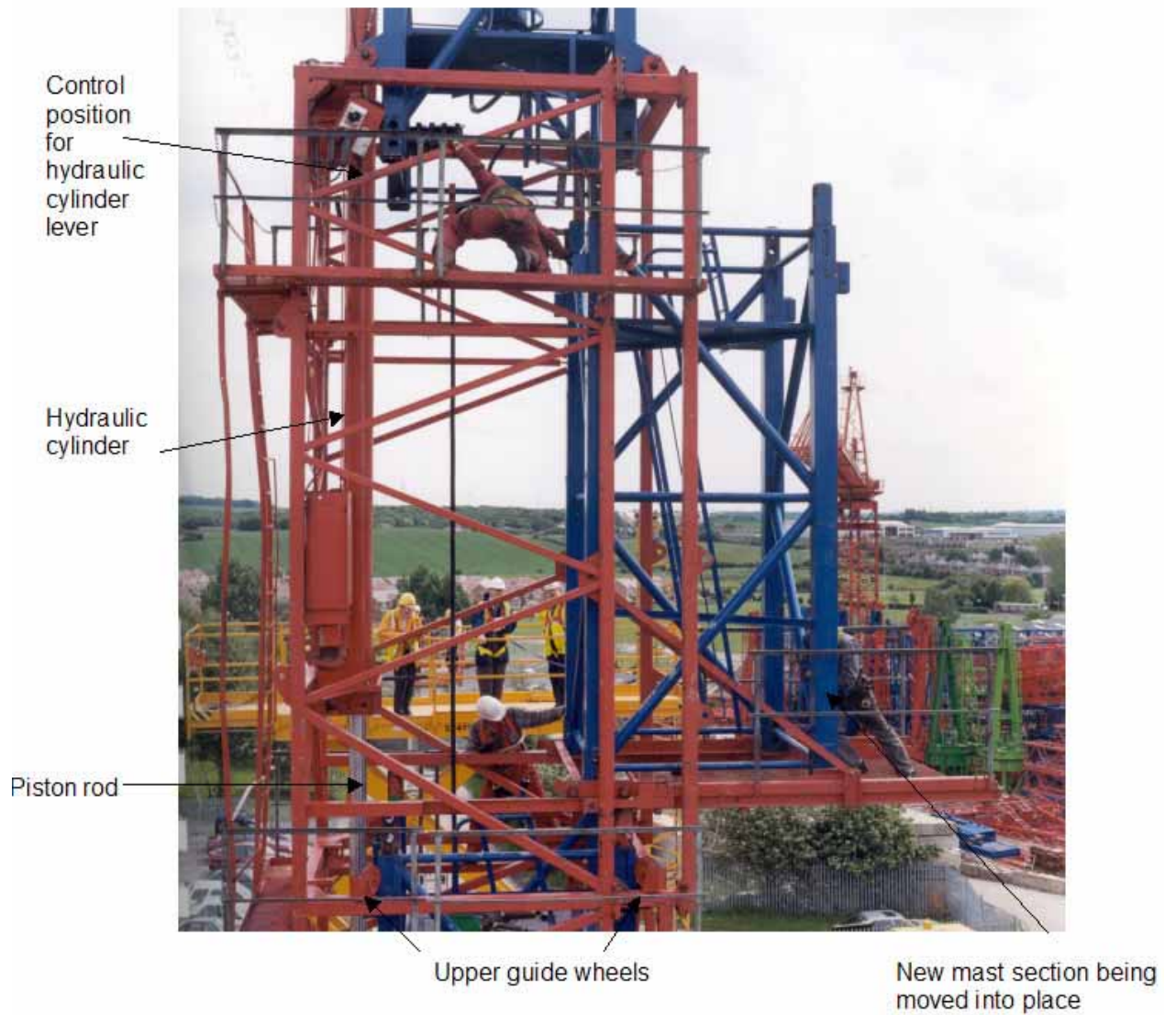
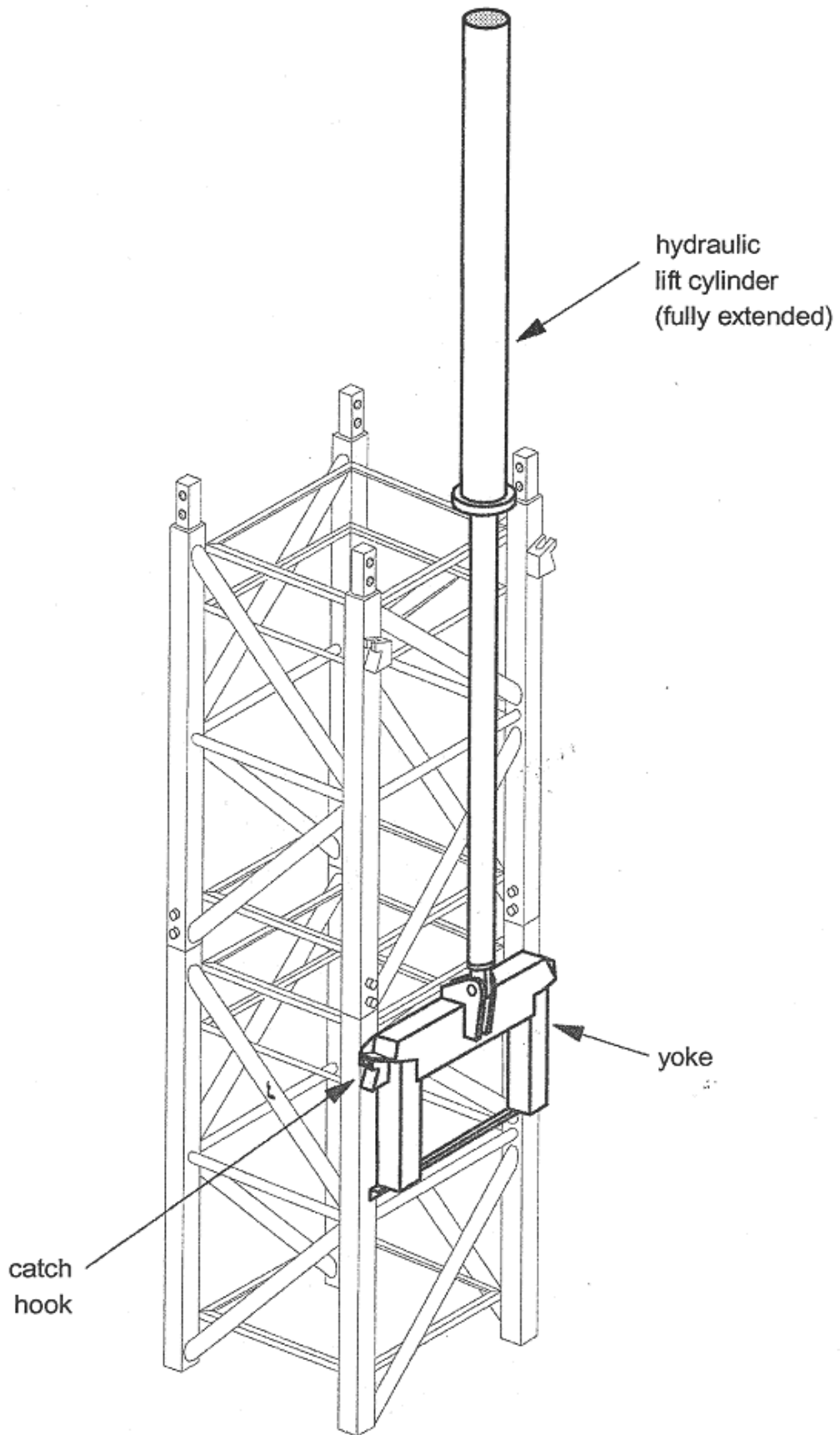


Figure 7 Demonstration of a climb with a luffing jib tower crane – moving new mast section into climbing frame



Note that the remainder of the climbing frame and the crane top have been omitted for clarity  
Figure 8 Arrangement of lift cylinder

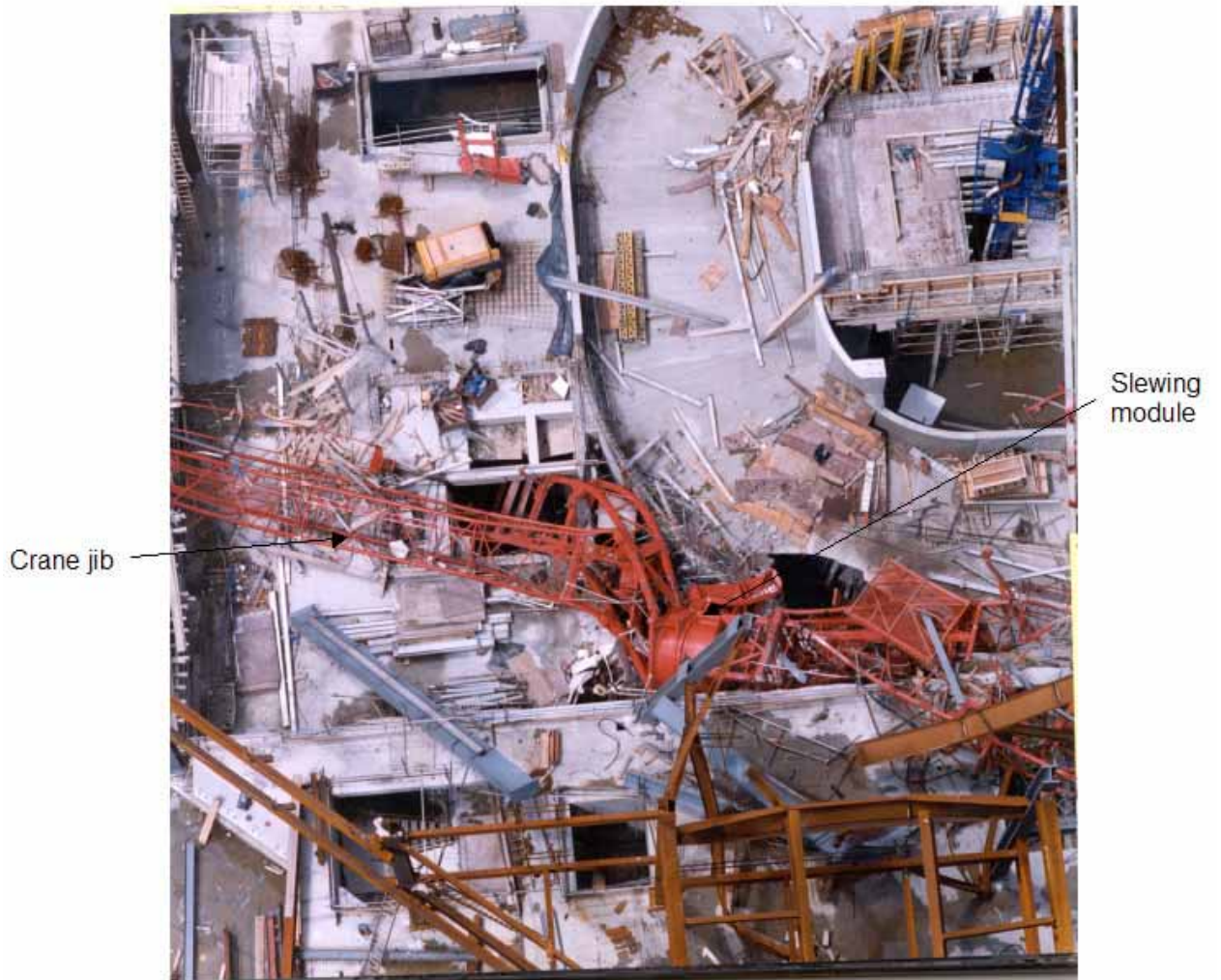


Figure 9 General area of DS1/DS2 site boundary showing plan view of wreckage

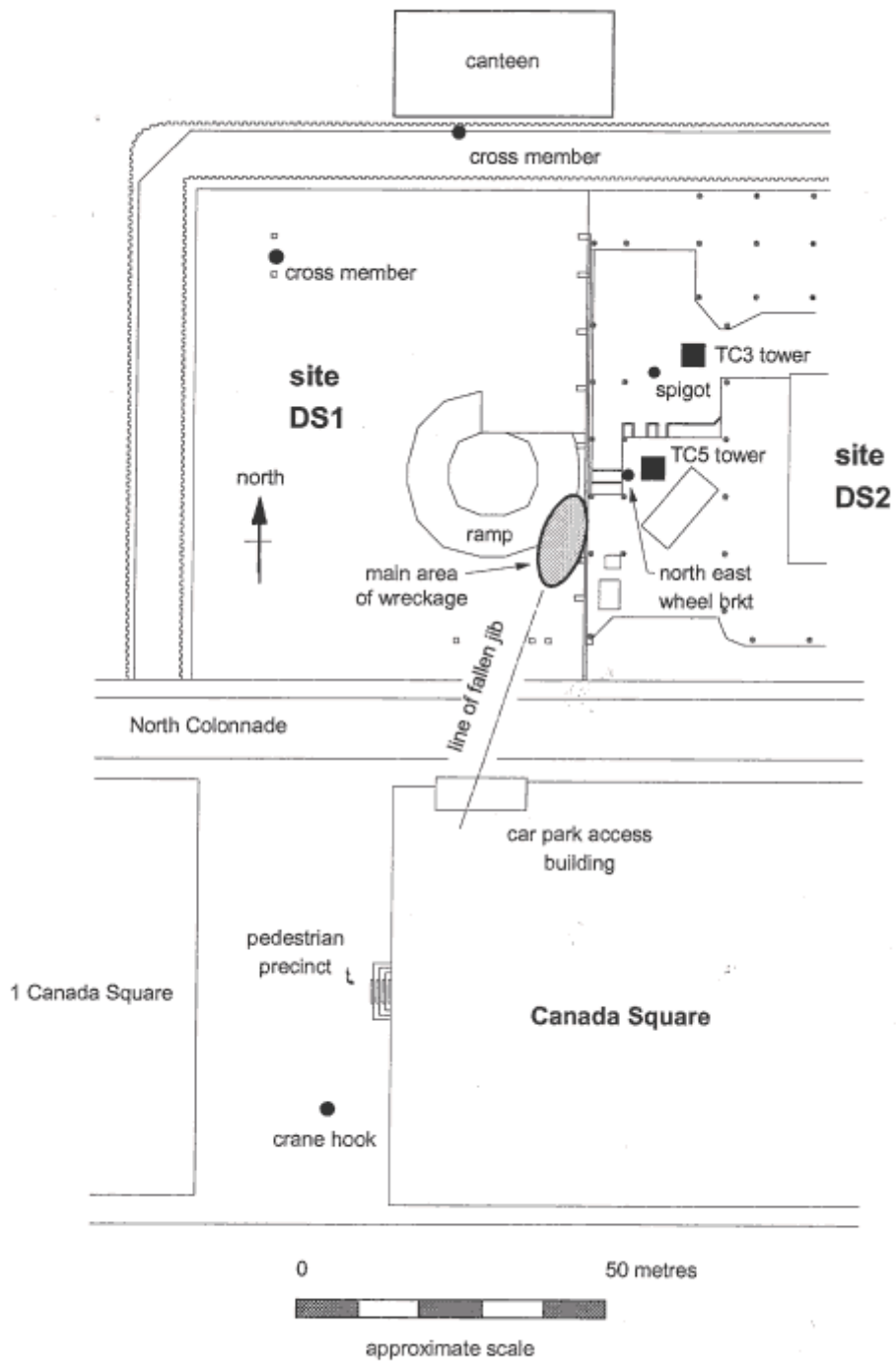
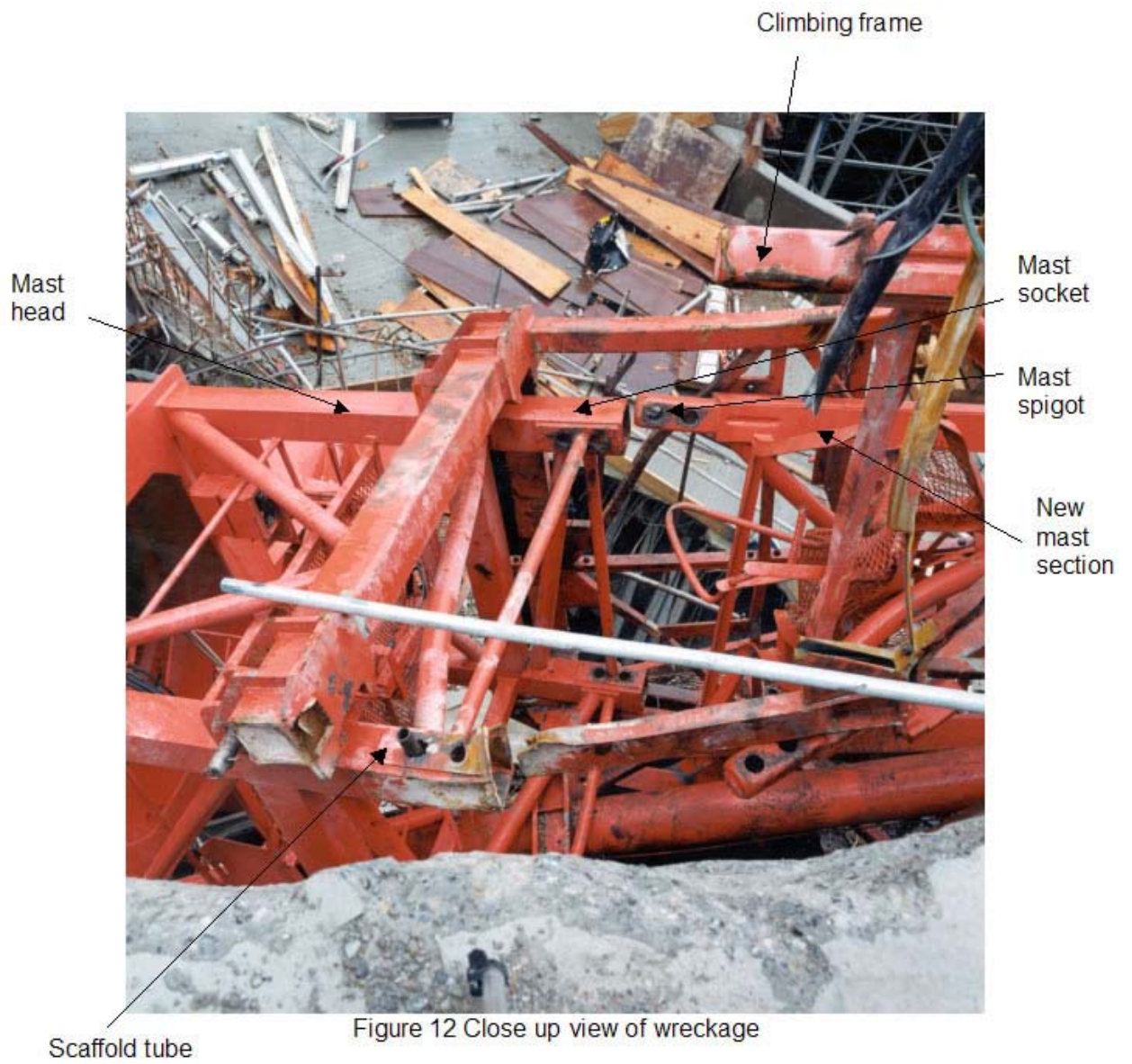


Figure 10 Plan of area around DS2 showing wreckage



Figure 11 View of wreckage



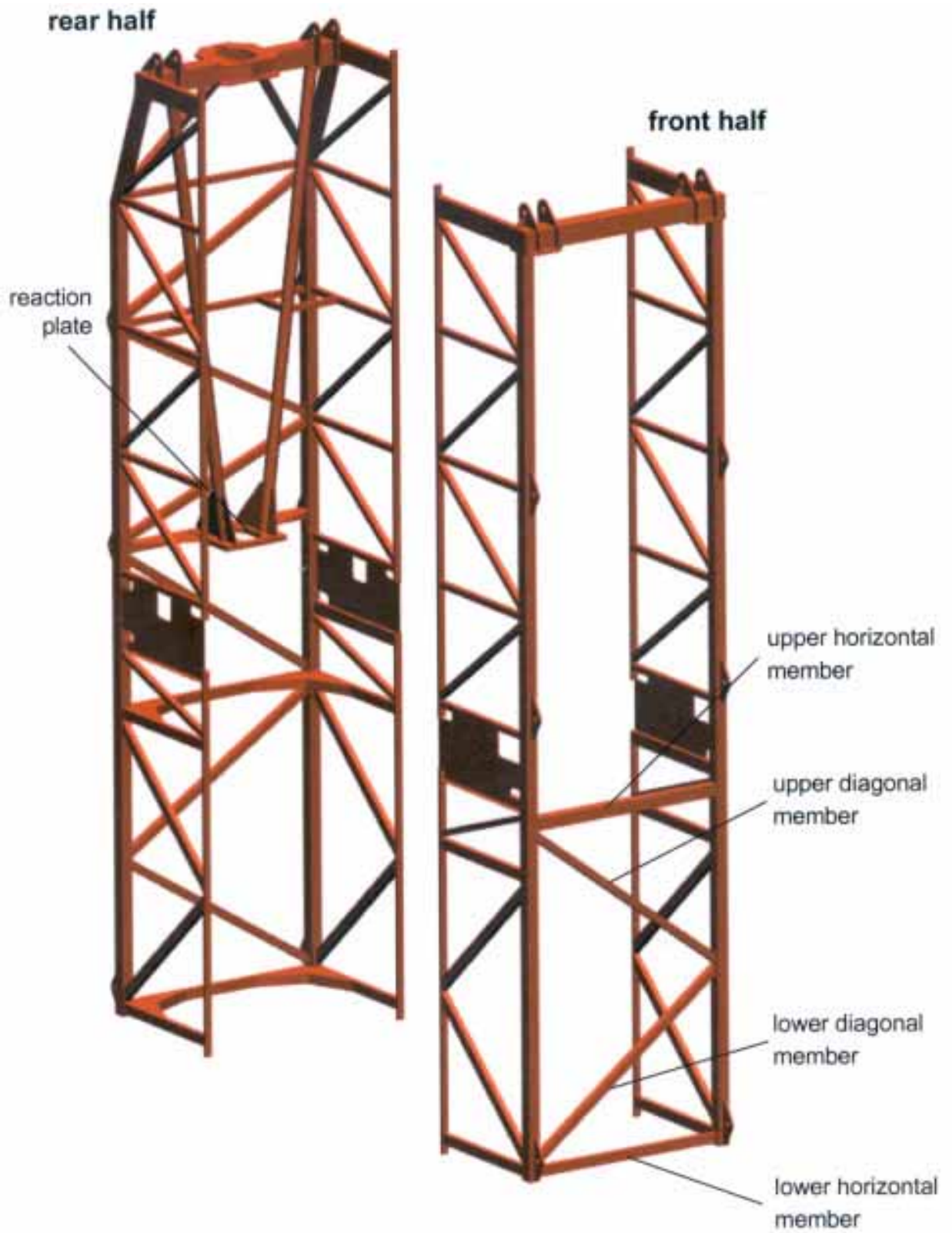
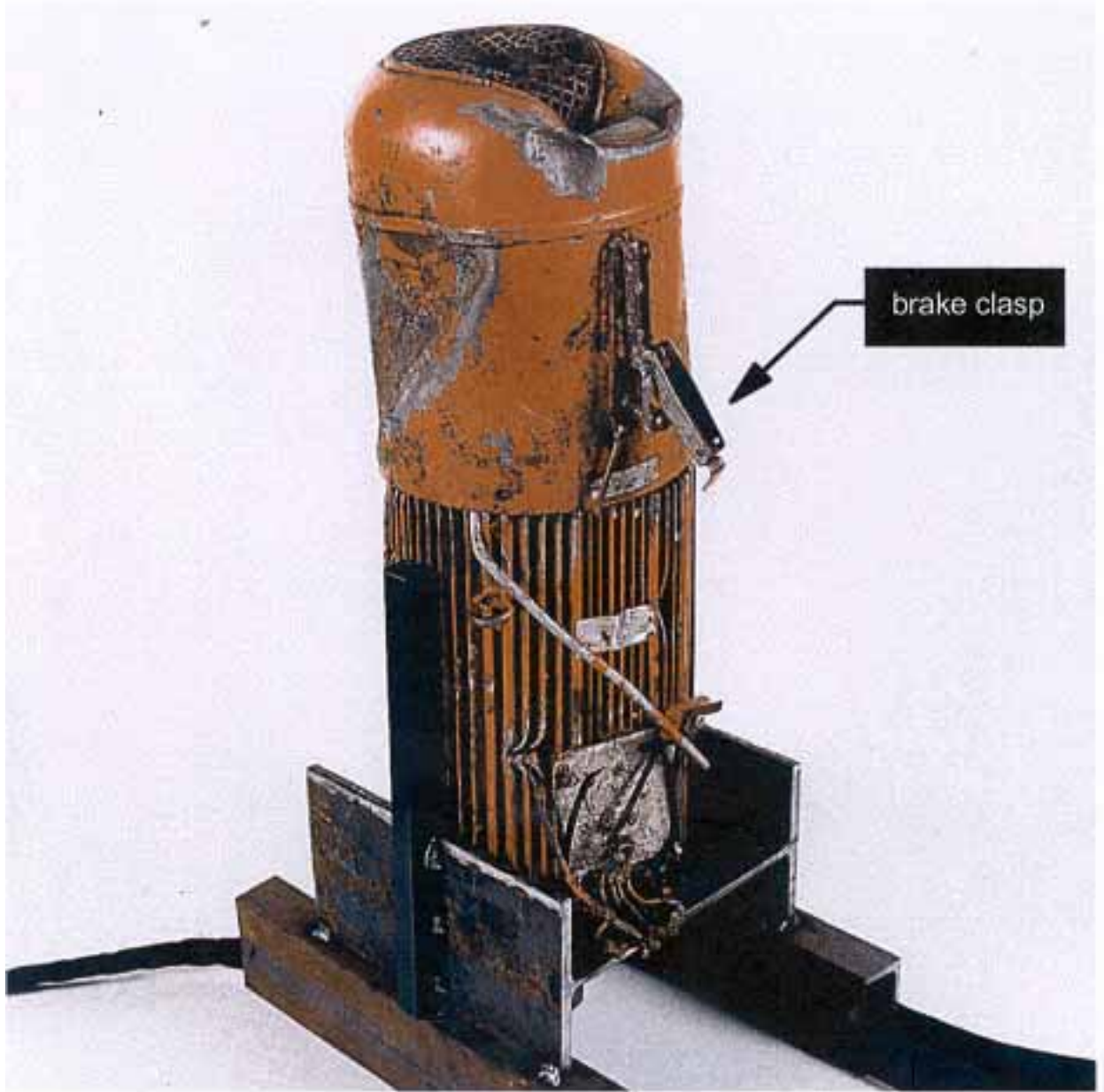


Figure 13 Sketch of two halves of KWH 20.5 climbing gear



HSL Neg 0009-030/4

Figure 14 Slewing motor recovered from wreckage



Figure 15 Two top mast sections of TC3 after recovery showing the pattern of damage

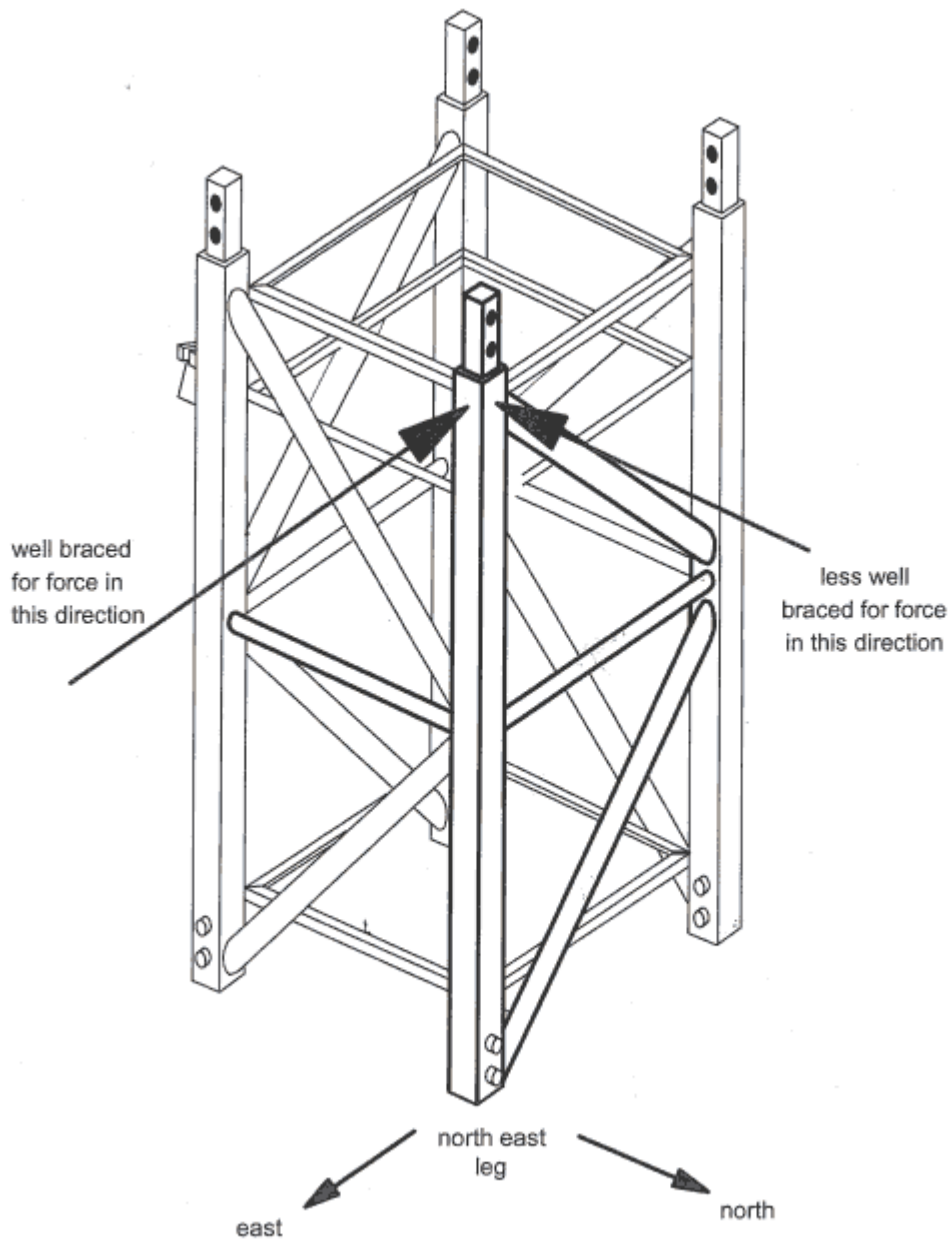


Figure 16 Drawing of top mast section illustrating the reason for the pattern of damage

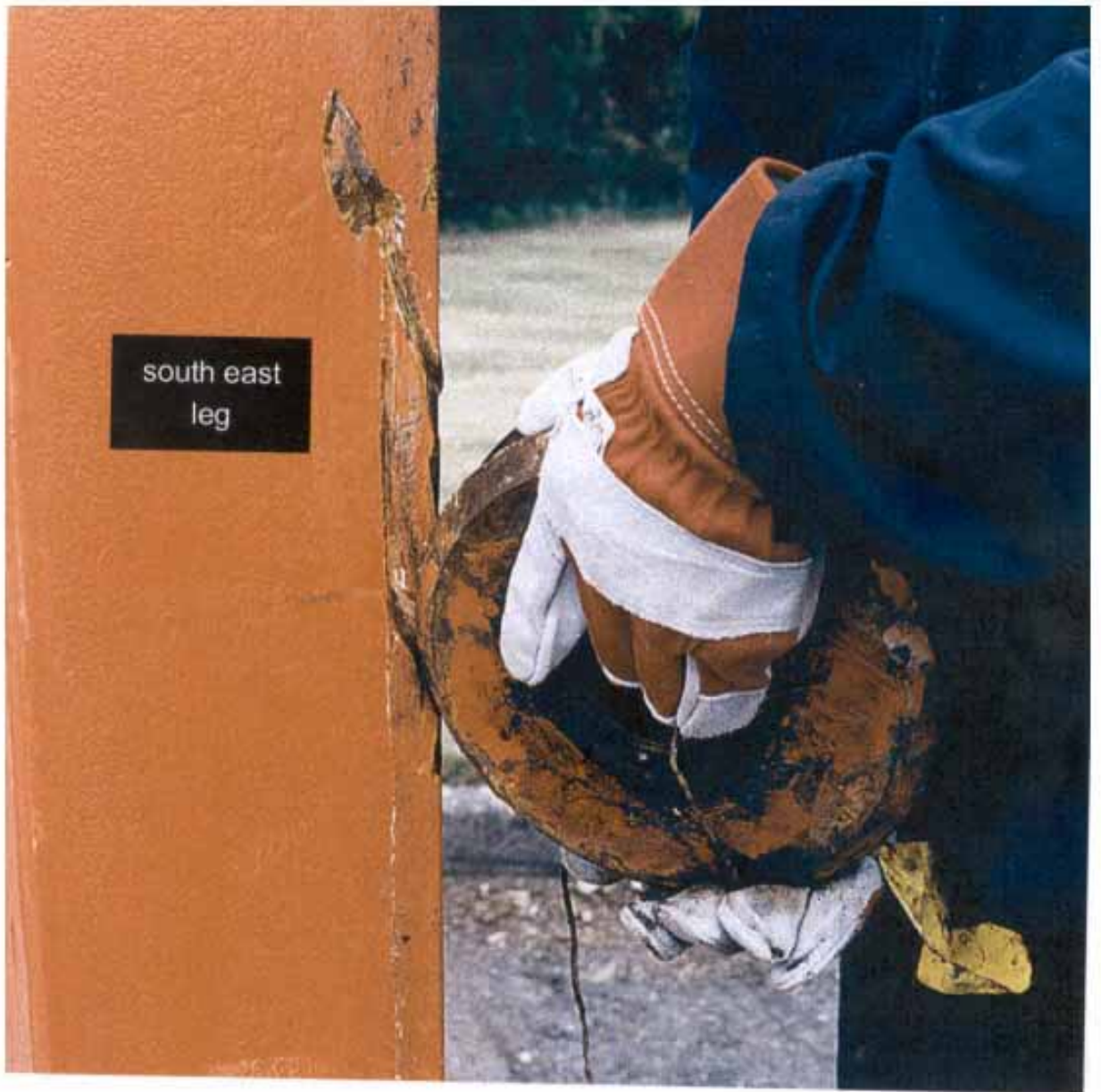


Figure 17 Guide Wheel being offered up to gouge marks on SE leg of mast section



South West Catch Hook



South East Catch Hook

Figure 18 Photographs of catch hooks on second mast section

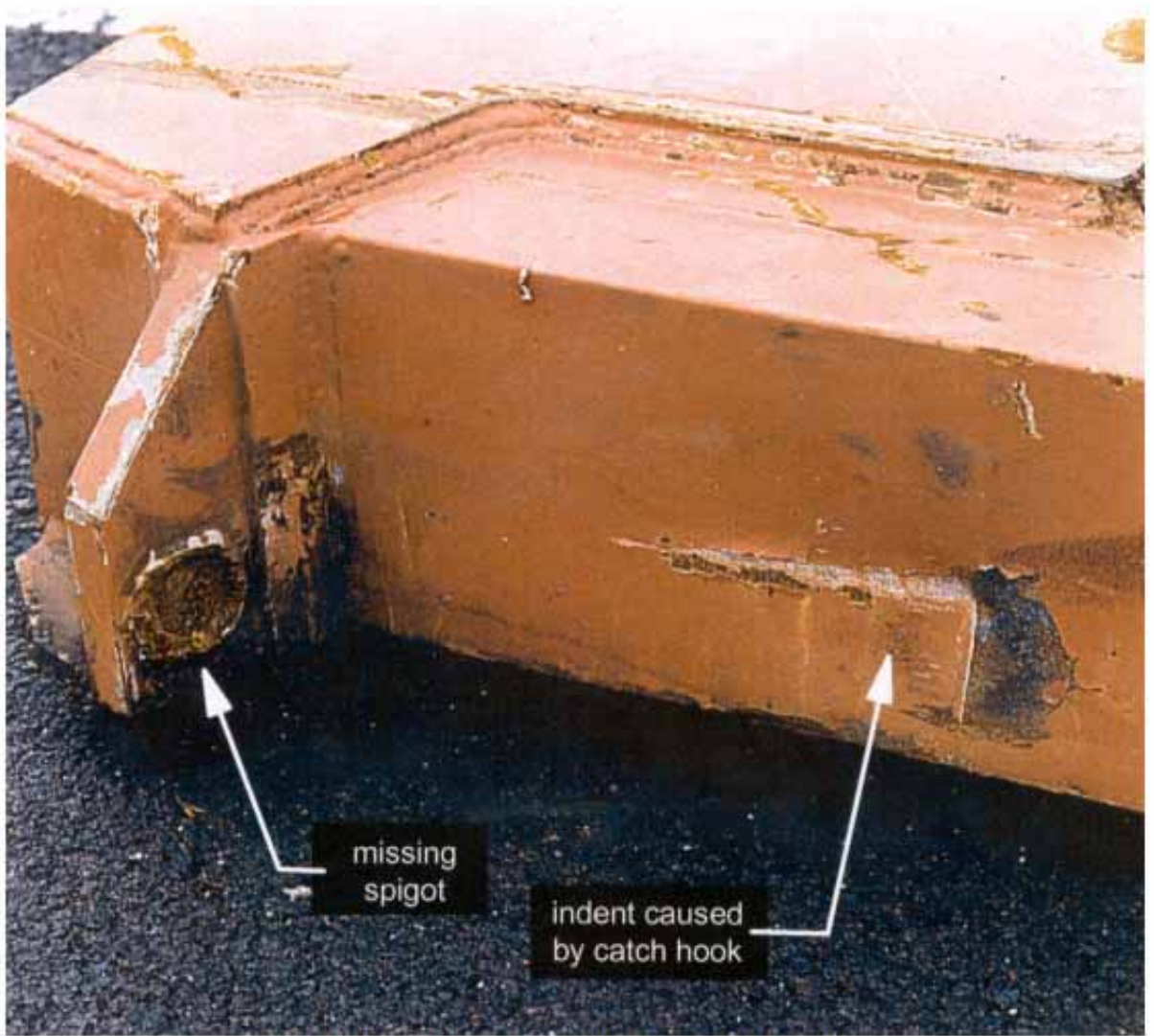
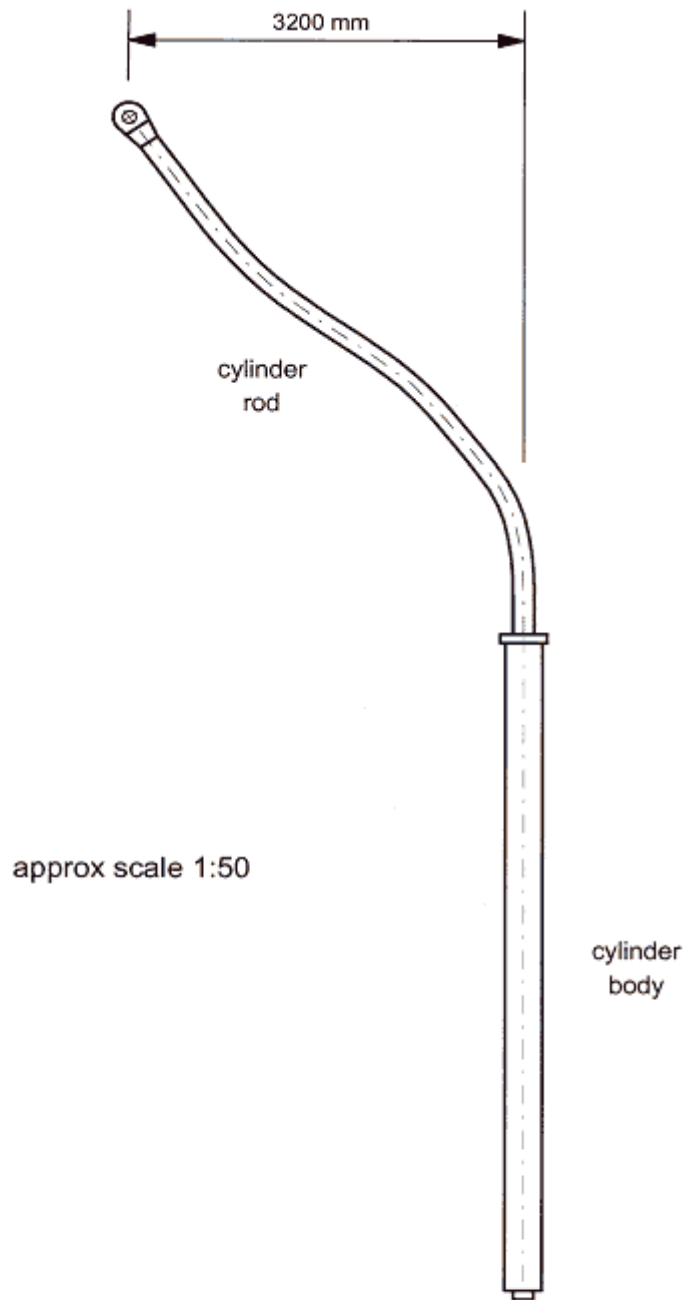


Figure 19 Yoke showing detached spigot



**Figure 20 Distorted hydraulic piston rod**



Figure 21 North East wheel housing that broke free in collapse being positioned on base plate